

Anabolic Lab™

Analytical Lab Testing for
Anabolic Steroid Harm Reduction

<http://anaboliclab.com>

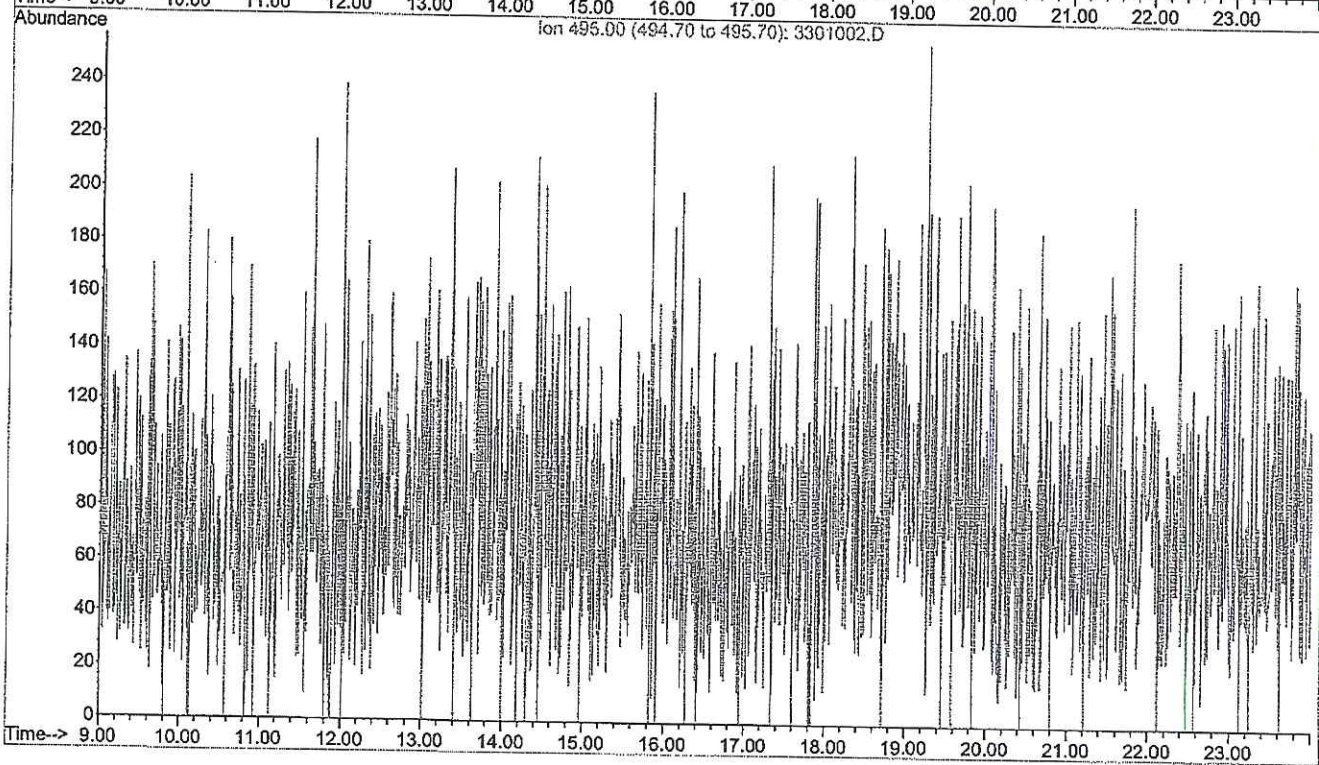
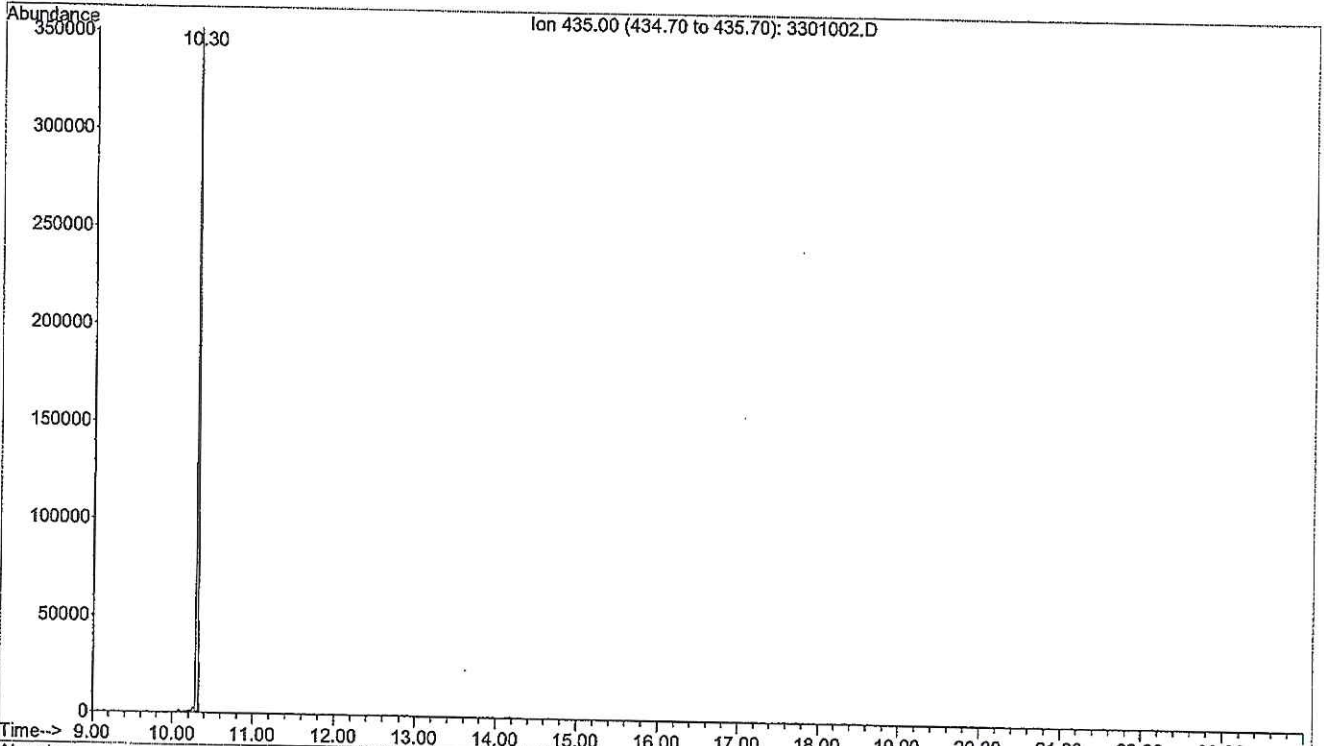
Lab Report Raw Data – February 11, 2016

Testosterone Enanthate

15-09429 [Sciroxx Labs Testodex Enanthate 250](#)

If you like this report, please visit [our website](#) to find out how you can support independent and objective lab testing.

File : C:\MSDCHEM\1\DATA\2016\1602\160204\3301002.D
Operator : MR
Acquired : 4 Feb 2016 18:33 using AcqMethod SCREEN ANABOS-ESTERS.M
Instrument : Instrument #1
Sample Name: Blc - EI 200ng
Misc Info :
Vial Number: 33



Handwritten signature or initials in blue ink.

Area Percent Report

Data Path : C:\MSDCHEM\1\DATA\2016\1602\160204\
Data File : 3301002.D
Acq On : 4 Feb 2016 18:33
Operator : MR
Sample : Blc - EI 200ng
Misc :
ALS Vial : 33 Sample Multiplier: 1

Integration Parameters: autoint1.e
Integrator: ChemStation

Method : C:\MSDCHEM\1\METHODS\TUNE.M
Title :

Signal : EIC Ion 435.00 (434.70 to 435.70)

peak #	R.T. min	first scan	max scan	last scan	PK TY	peak height	corr. area	corr. % max.	% of total
1	10.304	404	408	412	M	350760	4153931	100.00%	100.000%

Sum of corrected areas: 4153931
Signal : EIC Ion 495.00 (494.70 to 495.70)

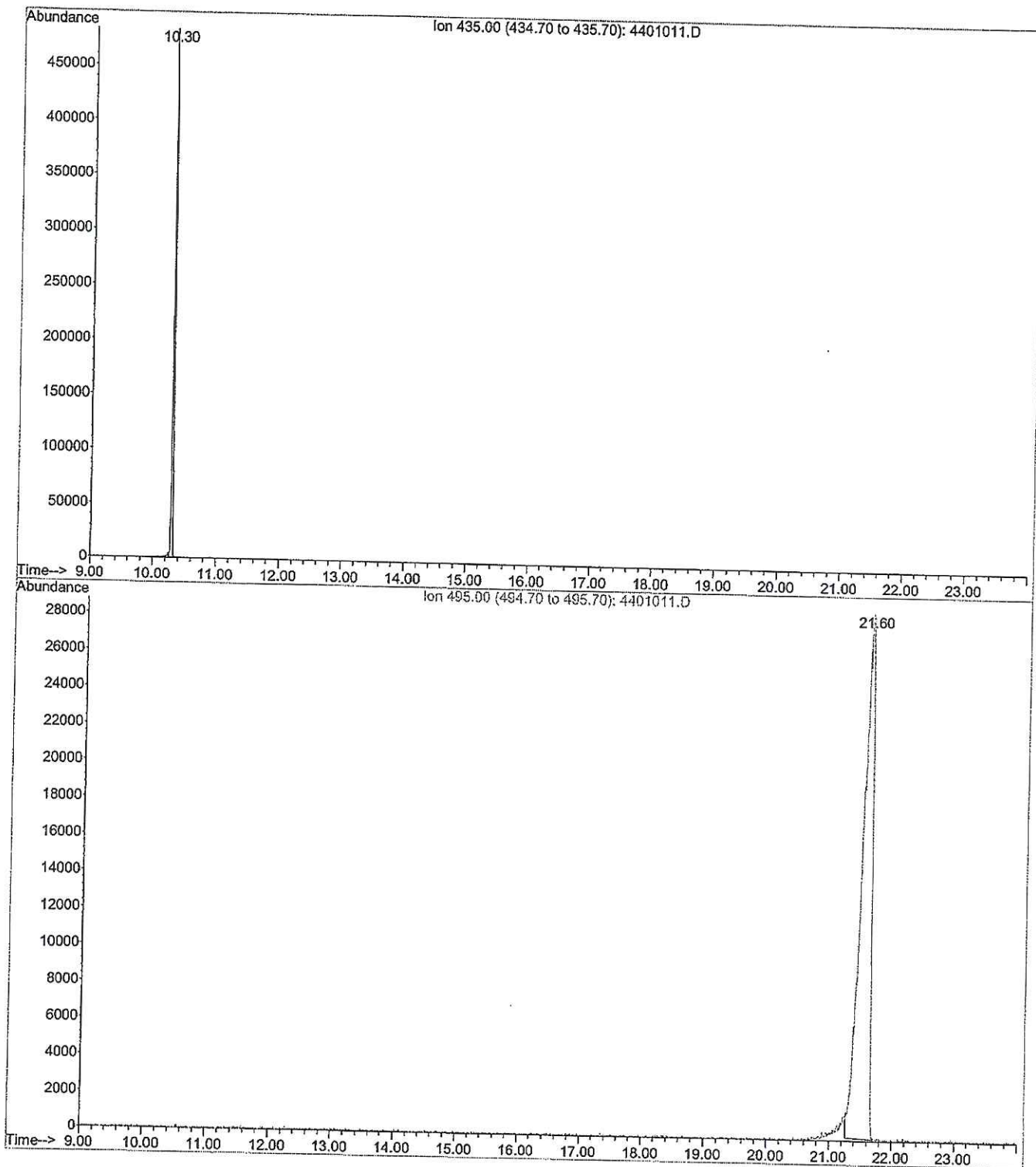
peak #	R.T. min	first scan	max scan	last scan	PK TY	peak height	corr. area	corr. % max.	% of total
--------	----------	------------	----------	-----------	-------	-------------	------------	--------------	------------

No peaks were detected using the method integration parameters!

TUNE.M Fri Feb 12 15:43:24 2016

02

File : C:\MSDCHEM\1\DATA\2016\1602\160204\4401011.D
Operator : MR
Acquired : 4 Feb 2016 23:55 using AcqMethod SCREEN ANABOS-ESTERS.M
Instrument : Instrument #1
Sample Name: Lin B1 - 20µL 20-500mg/L - EI 200ng
Misc Info :
Vial Number: 44



Area Percent Report

Data Path : C:\MSDCHEM\1\DATA\2016\1602\160204\
 Data File : 4401011.D
 Acq On : 4 Feb 2016 23:55
 Operator : MR
 Sample : Lin B1 - 20µL 20-500mg/L - EI 200ng
 Misc :
 ALS Vial : 44 Sample Multiplier: 1

Integration Parameters: autoint1.e
 Integrator: ChemStation

Method : C:\MSDCHEM\1\METHODS\TUNE.M
 Title :

Signal : EIC Ion 435.00 (434.70 to 435.70)

peak #	R.T. min	first scan	max scan	last scan	PK TY	peak height	corr. area	corr. % max.	% of total
1	10.296	402	407	415	M3	495002	6097359	100.00%	100.000%

Sum of corrected areas: 6097359
 Signal : EIC Ion 495.00 (494.70 to 495.70)

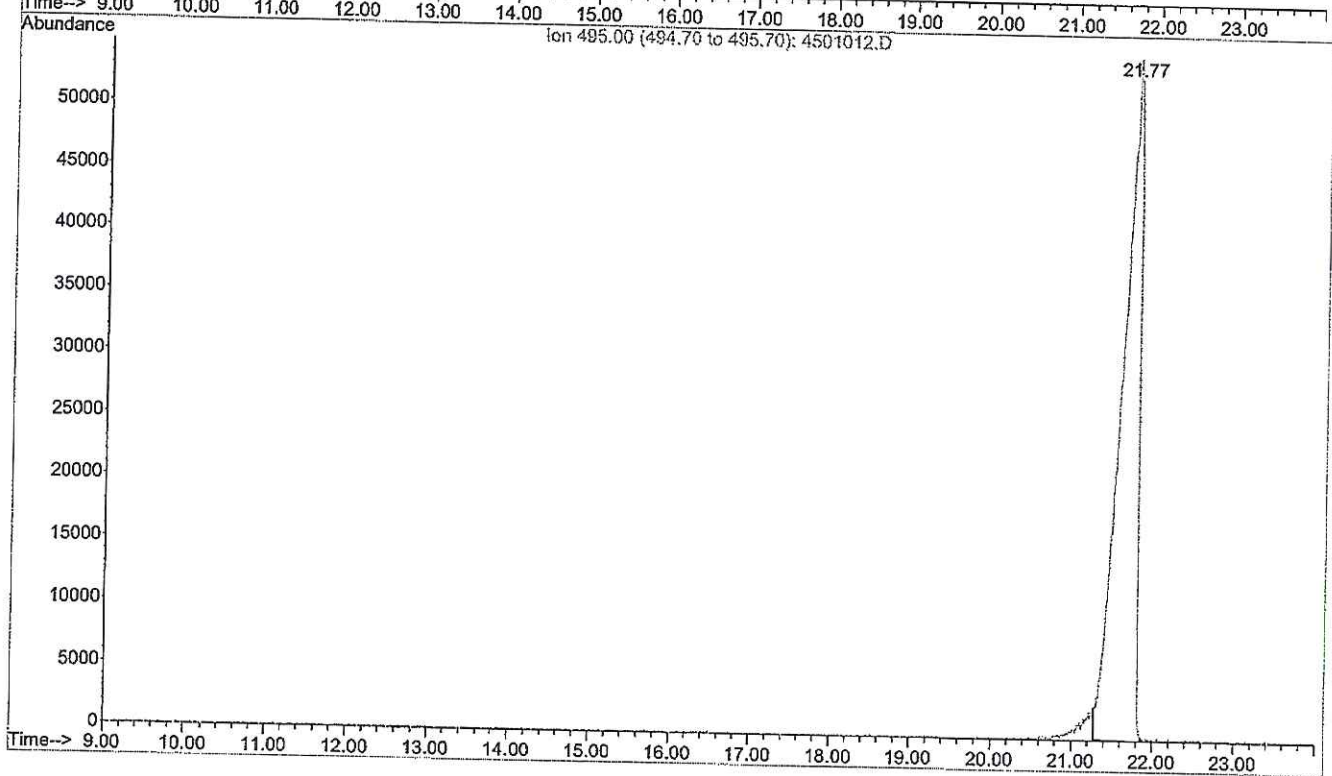
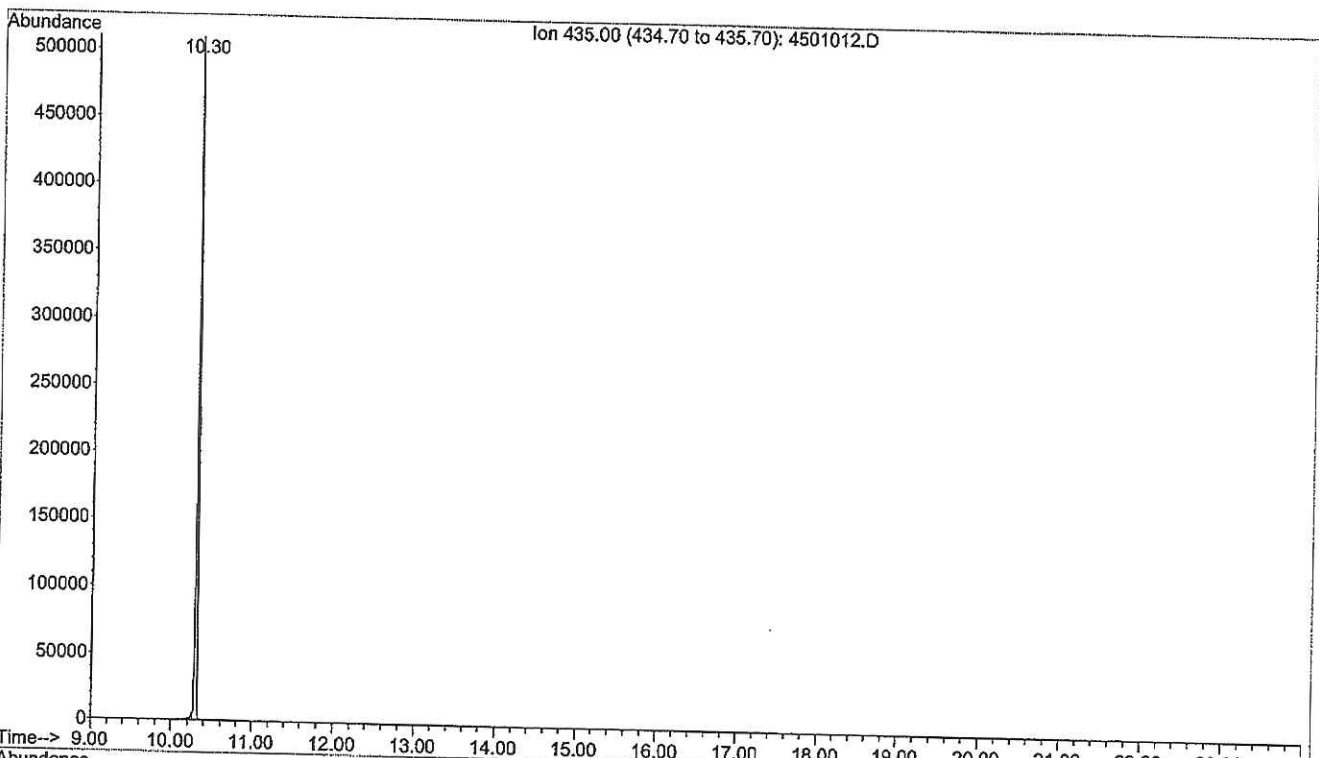
peak #	R.T. min	first scan	max scan	last scan	PK TY	peak height	corr. area	corr. % max.	% of total
1	21.607	1793	1837	1847	M	28659	3156375	100.00%	100.000%

Sum of corrected areas: 3156375

TUNE.M Fri Feb 12 15:23:36 2016

02

File :C:\MSDCHEM\1\DATA\2016\1602\160204\4501012.D
Operator : MR
Acquired : 5 Feb 2016 00:31 using AcqMethod SCREEN ANABOS-ESTERS.M
Instrument : Instrument #1
Sample Name: Lin B2 - 20µL 50-1000mg/L - EI 200ng
Misc Info :
Vial Number: 45



00

Area Percent Report

ta Path : C:\MSDCHEM\1\DATA\2016\1602\160204\
ta File : 4501012.D
q On : 5 Feb 2016 00:31
erator : MR
mple : Lin B2 - 20µL 50-1000mg/L - EI 200ng
sc :
S Vial : 45 Sample Multiplier: 1

tegration Parameters: autoint1.e
tegrator: ChemStation

thod : C:\MSDCHEM\1\METHODS\TUNE.M
tle :

gnal : EIC Ion 435.00 (434.70 to 435.70)

k	R.T.	first	max	last	PK	peak	corr.	corr.	% of
	min	scan	scan	scan	TY	height	area	% max.	total
	10.296	402	407	412	M	512648	6278917	100.00%	100.000%

Sum of corrected areas: 6278917

gnal : EIC Ion 495.00 (494.70 to 495.70)

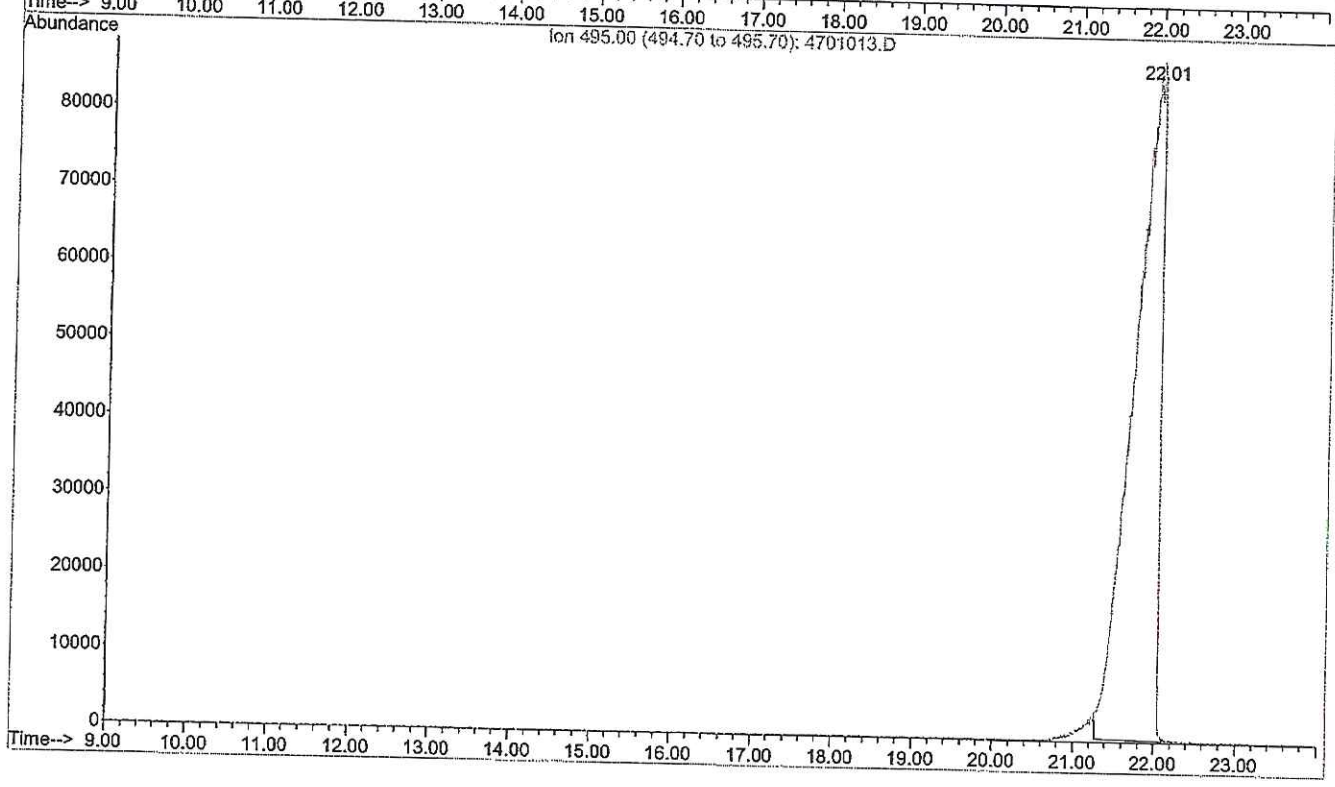
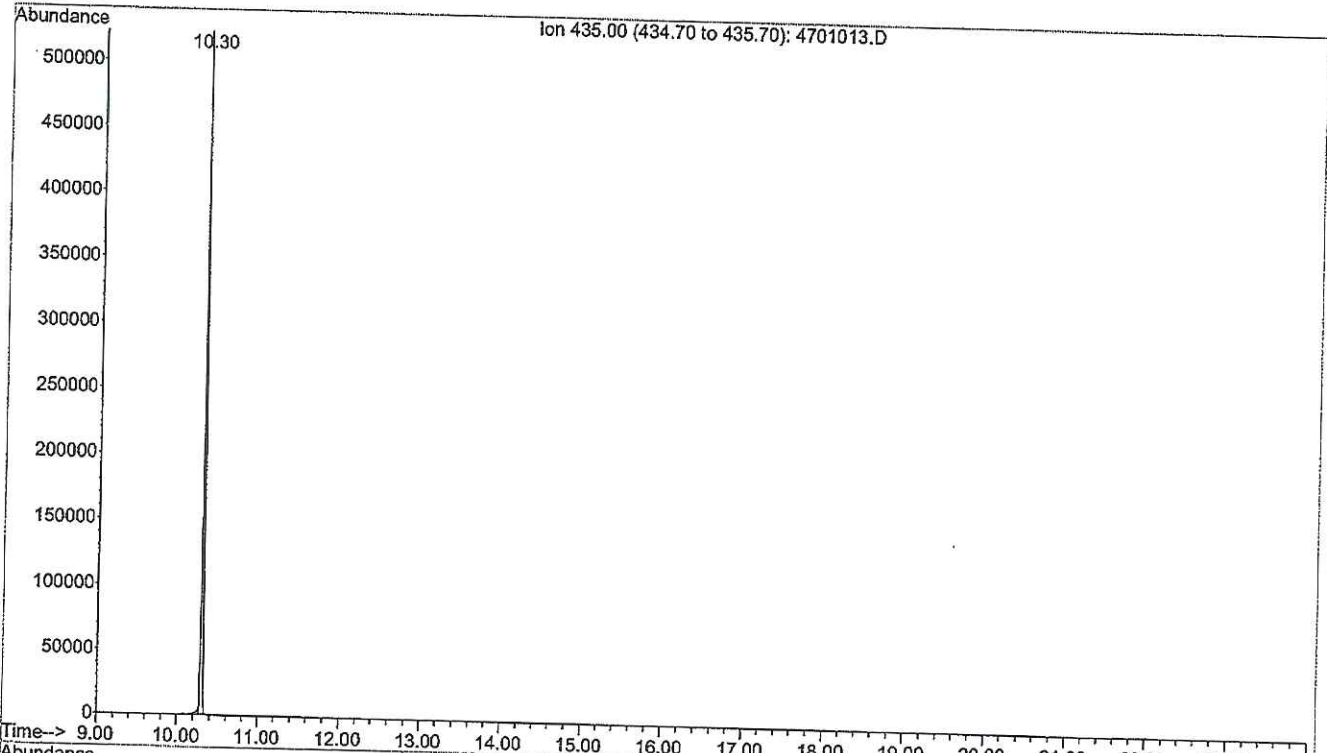
k	R.T.	first	max	last	PK	peak	corr.	corr.	% of
	min	scan	scan	scan	TY	height	area	% max.	total
	21.773	1795	1858	1869	M	55127	8217586	100.00%	100.000%

Sum of corrected areas: 8217586

.M Fri Feb 12 15:25:17 2016



File :C:\MSDCHEM\1\DATA\2016\1602\160204\4701013.D
Operator : MR
Acquired : 5 Feb 2016 1:07 using AcqMethod SCREEN ANABOS-ESTERS.M
Instrument : Instrument #1
Sample Name: Lin B3 - 20µL 100-2000mg/L - EI 200ng
Misc Info :
Vial Number: 47



00

Area Percent Report

Data Path : C:\MSDCHEM\1\DATA\2016\1602\160204\
Data File : 4701013.D
Acq On : 5 Feb 2016 1:07
Operator : MR
Sample : Lin B3 - 20µL 100-2000mg/L - EI 200ng
Misc :
ALS Vial : 47 Sample Multiplier: 1

Integration Parameters: autoint1.e
Integrator: ChemStation

Method : C:\MSDCHEM\1\METHODS\TUNE.M
Title :

Signal : EIC Ion 435.00 (434.70 to 435.70)

peak #	R.T. min	first scan	max scan	last scan	PK TY	peak height	corr. area	corr. % max.	% of total
1	10.296	403	407	412	M	523719	6393093	100.00%	100.000%

Sum of corrected areas: 6393093
Signal : EIC Ion 495.00 (494.70 to 495.70)

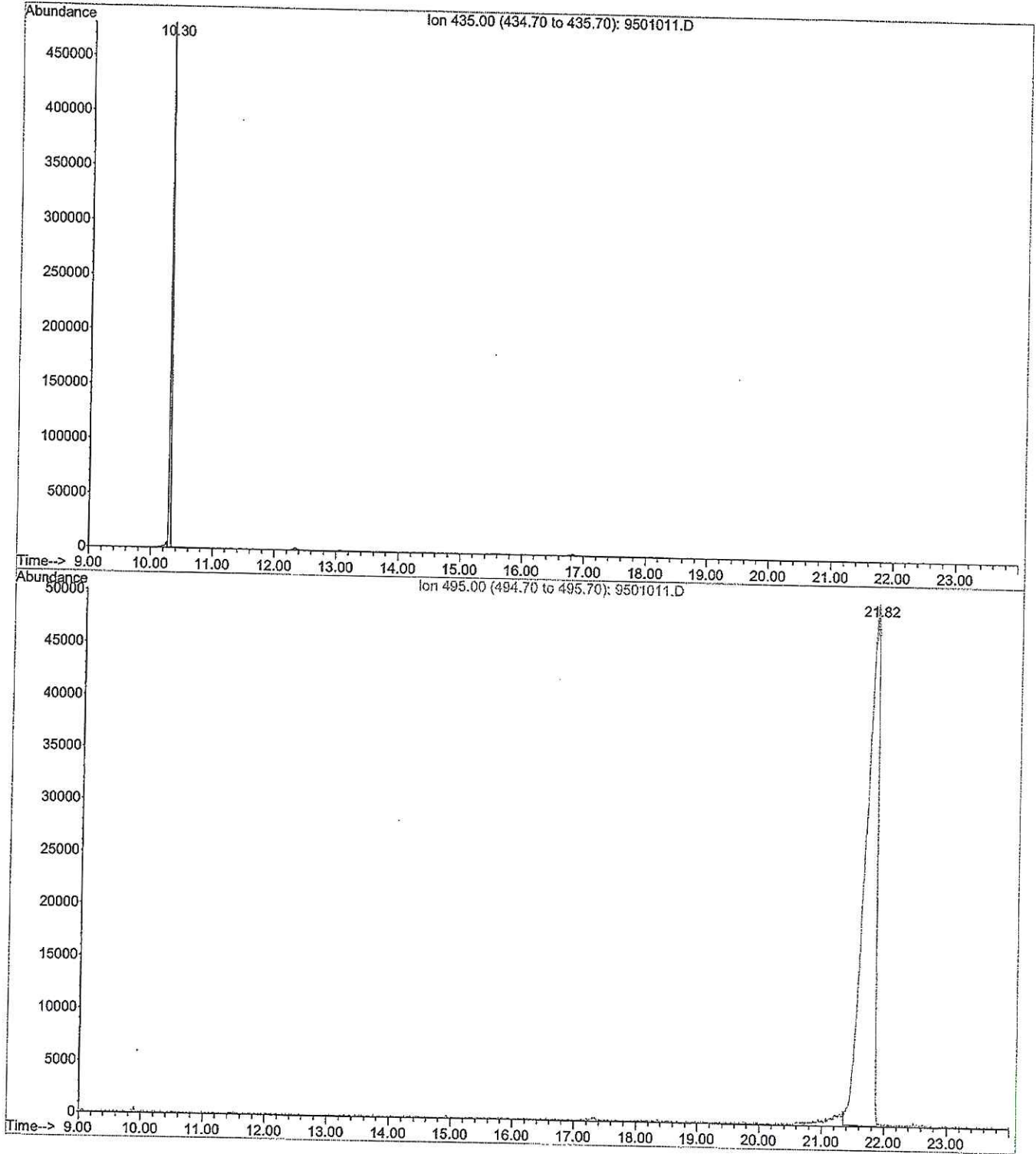
peak #	R.T. min	first scan	max scan	last scan	PK TY	peak height	corr. area	corr. % max.	% of total
1	22.010	1793	1888	1900	M2	88347	19942102	100.00%	100.000%

Sum of corrected areas: 19942102

TUNE.M Fri Feb 12 15:42:33 2016

CU

File :C:\MSDCHEM\1\DATA\2016\1602\160209\9501011.D
Operator : JFM
Acquired : 9 Feb 2016 15:51 using AcqMethod SCREEN ANABOS-ESTERS.M
Instrument : Instrument #1
Sample Name: 15-09429 - 20µL dilu  1/100 - EI 200ng
Misc Info :
Vial Number: 95



02

Area Percent Report

Data Path : C:\MSDCHEM\1\DATA\2016\1602\160209\
 Data File : 9501011.D
 Acq On : 9 Feb 2016 15:51
 Operator : JFM
 Sample : 15-09429 - 20µL dilué 1/100 - EI 200ng
 Misc :
 ALS Vial : 95 Sample Multiplier: 1

Integration Parameters: autoint1.e
 Integrator: ChemStation

Method : C:\MSDCHEM\1\METHODS\TUNE.M
 Title :

Signal : EIC Ion 435.00 (434.70 to 435.70)

peak #	R.T. min	first scan	max scan	last scan	PK TY	peak height	corr. area	corr. % max.	% of total
1	10.304	403	408	413	M2	487578	6286789	100.00%	100.000%

Sum of corrected areas: 6286789
 Signal : EIC Ion 495.00 (494.70 to 495.70)

peak #	R.T. min	first scan	max scan	last scan	PK TY	peak height	corr. area	corr. % max.	% of total
1	21.820	1803	1864	1873	M	50087	6527269	100.00%	100.000%

Sum of corrected areas: 6527269

TUNE.M Fri Feb 12 15:53:49 2016