

Anabolic Lab™

Analytical Lab Testing for
Anabolic Steroid Harm Reduction

<http://anaboliclab.com>

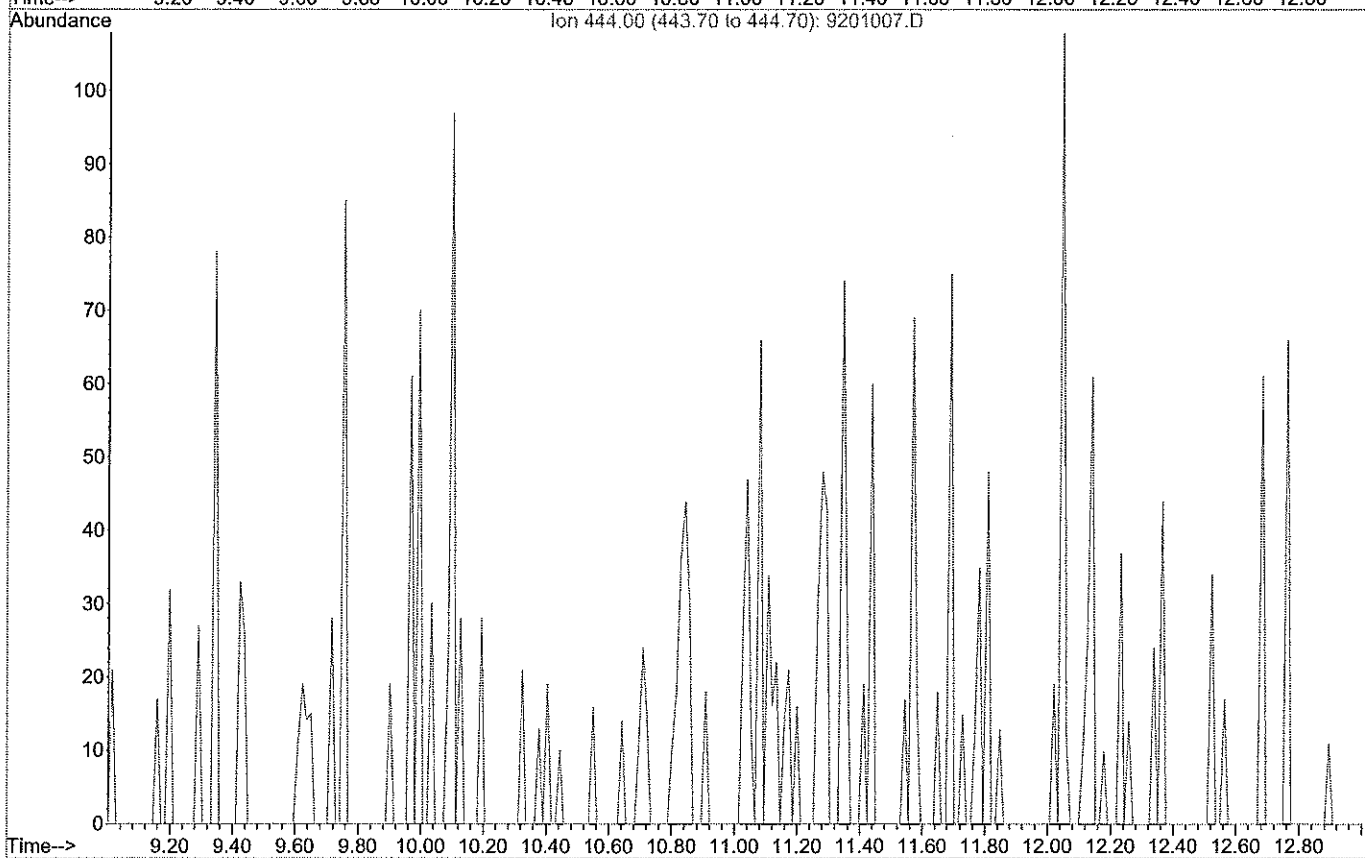
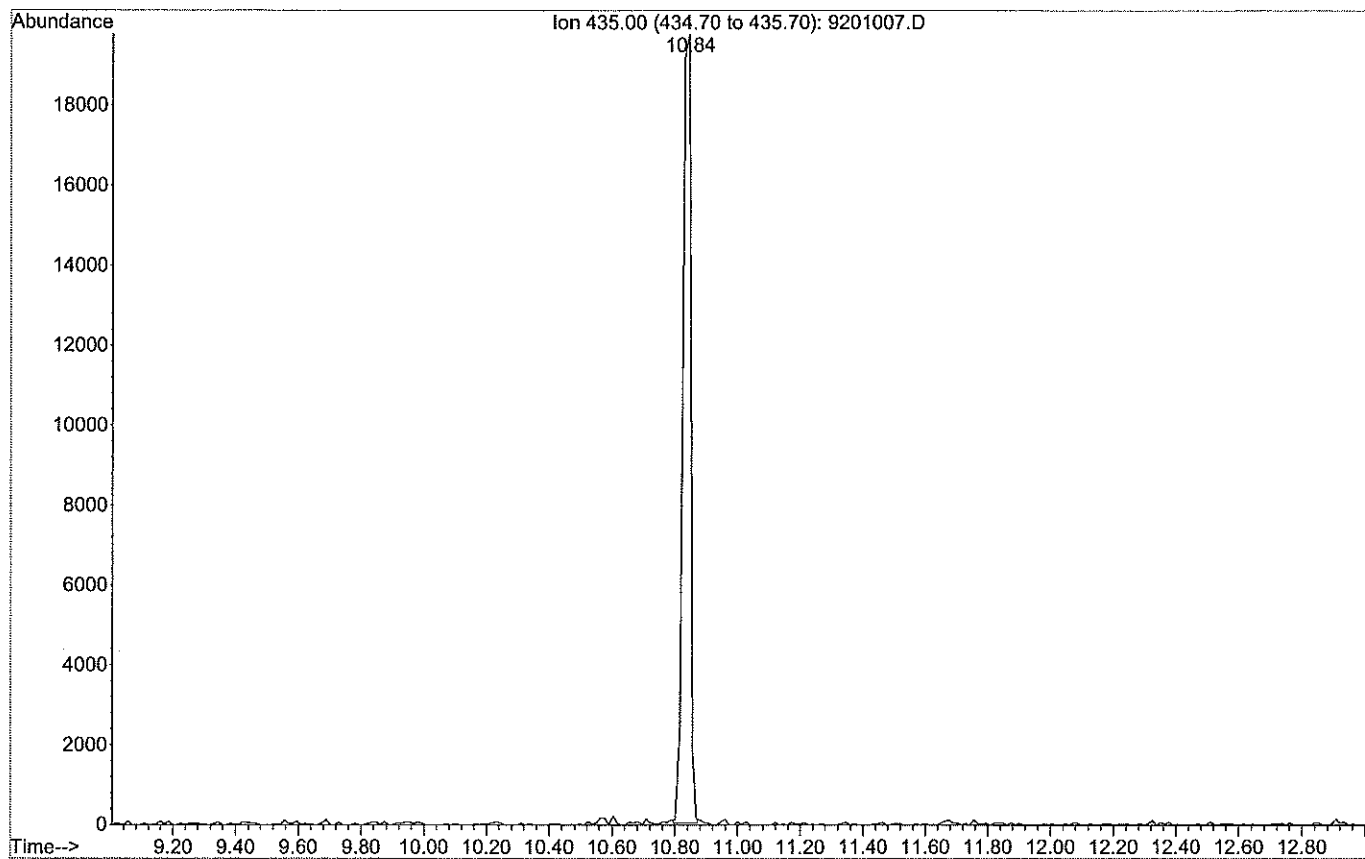
Lab Report Raw Data – January 21, 2016

Methandienone

15-09430 [Geneza Pharma GP Methan 10](#)
15-09431 [Kalpa Pharma Dianoxyl 10](#)
15-09432 [Pharmacom Labs Dianabolos](#)
15-09233 [Vermodje Naposim](#)

If you like this report, please visit [our website](#) to find out how you can support independent and objective lab testing.

File : C:\MSDCHEM\1\DATA\2016\1601\160115\9201007.D
Operator : JFM
Acquired : 15 Jan 2016 16:17 using AcqMethod SCREENANABOS-ESTERS.M
Instrument : Instrument #1
Sample Name: Blc - EI 100ng
Misc Info :
Vial Number: 92



Area Percent Report

Data Path : C:\MSDCHEM\1\DATA\2016\1601\160115\
Data File : 9201007.D
Acq On : 15 Jan 2016 16:17
Operator : JFM
Sample : Blc - EI 100ng
Misc :
ALS Vial : 92 Sample Multiplier: 1

Integration Parameters: autoint1.e
Integrator: ChemStation

Method : C:\MSDCHEM\1\METHODS\GC O-C SYLILES\OCPULSIM.M
Title :

Signal : EIC Ion 435.00 (434.70 to 435.70)

peak #	R.T. min	first scan	max scan	last scan	PK TY	peak height	corr. area	corr. % max.	% of total
1	10.842	545	549	551	M	21783	343482	100.00%	100.000%

Sum of corrected areas: 343482

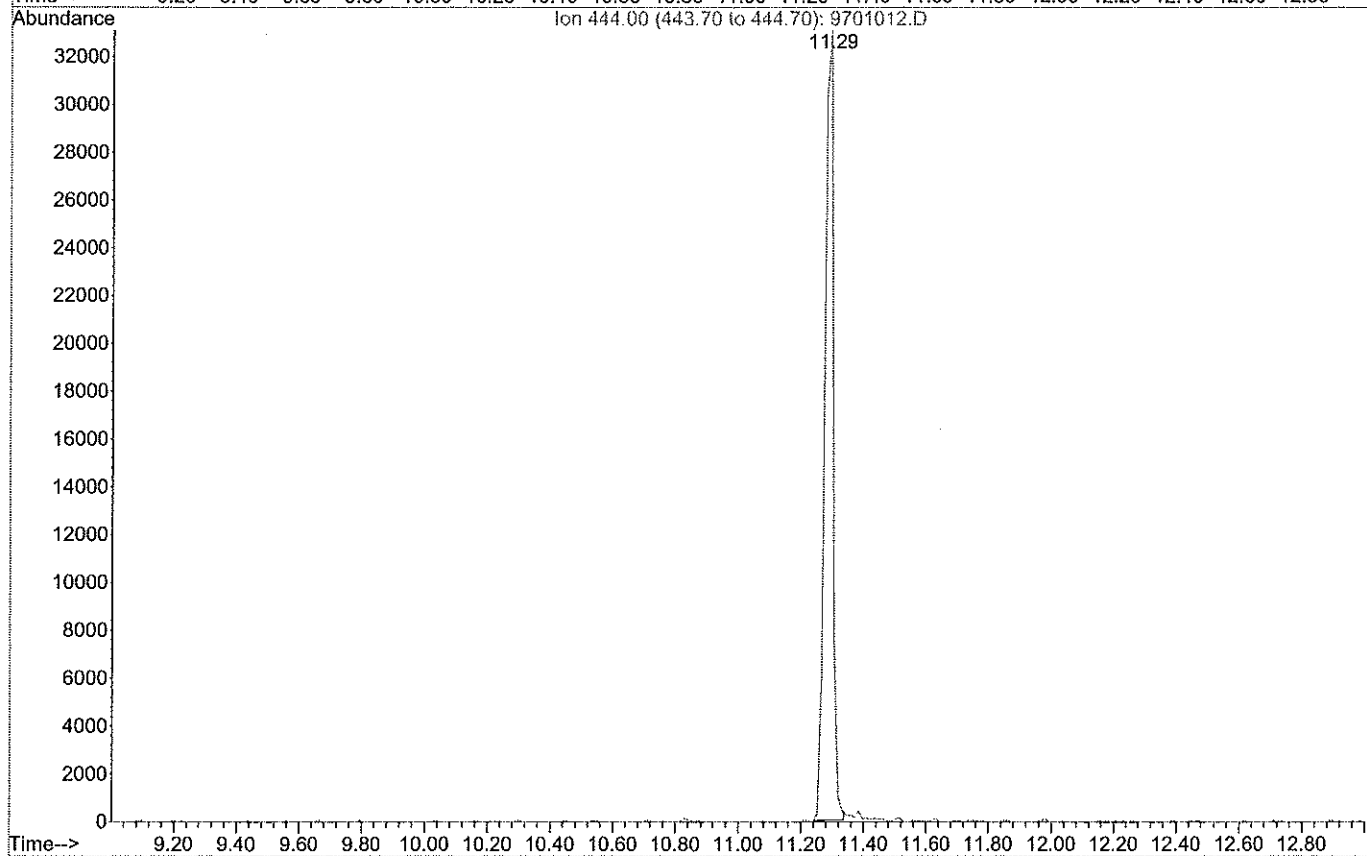
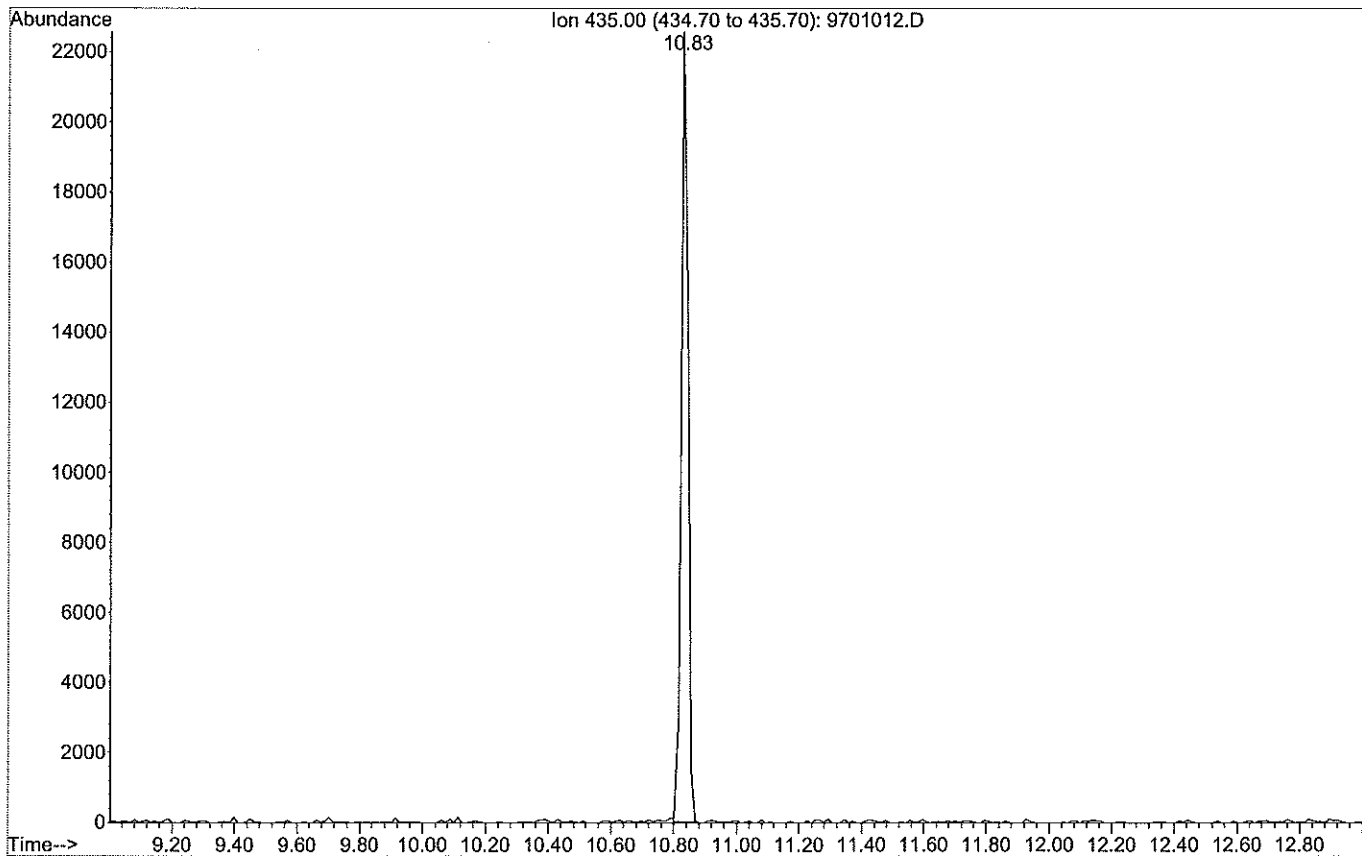
Signal : EIC Ion 444.00 (443.70 to 444.70)

peak #	R.T. min	first scan	max scan	last scan	PK TY	peak height	corr. area	corr. % max.	% of total
--------	----------	------------	----------	-----------	-------	-------------	------------	--------------	------------

No peaks were detected using the method integration parameters!

OCPULSIM.M Mon Jan 18 09:55:44 2016

File : C:\MSDCHEM\1\DATA\2016\1601\160115\9701012.D
Operator : JFM
Acquired : 15 Jan 2016 19:17 using AcqMethod SCREENANABOS-ESTERS.M
Instrument : Instrument #1
Sample Name: Calib 100mg/L - EI 100ng
Misc Info :
Vial Number: 97



Area Percent Report

Data Path : C:\MSDCHEM\1\DATA\2016\1601\160115\
 Data File : 9701012.D
 Acq On : 15 Jan 2016 19:17
 Operator : JFM
 Sample : Calib 100mg/L - EI 100ng
 Misc :
 ALS Vial : 97 Sample Multiplier: 1

Integration Parameters: autoint1.e
 Integrator: ChemStation

Method : C:\MSDCHEM\1\METHODS\GC O-C SYLILES\OCPULSIM.M
 Title :

Signal : EIC Ion 435.00 (434.70 to 435.70)

peak #	R.T. min	first scan	max scan	last scan	PK TY	peak height	corr. area	corr. % max.	% of total
1	10.829	546	548	551	M	23158	330477	100.00%	100.000%

Sum of corrected areas: 330477

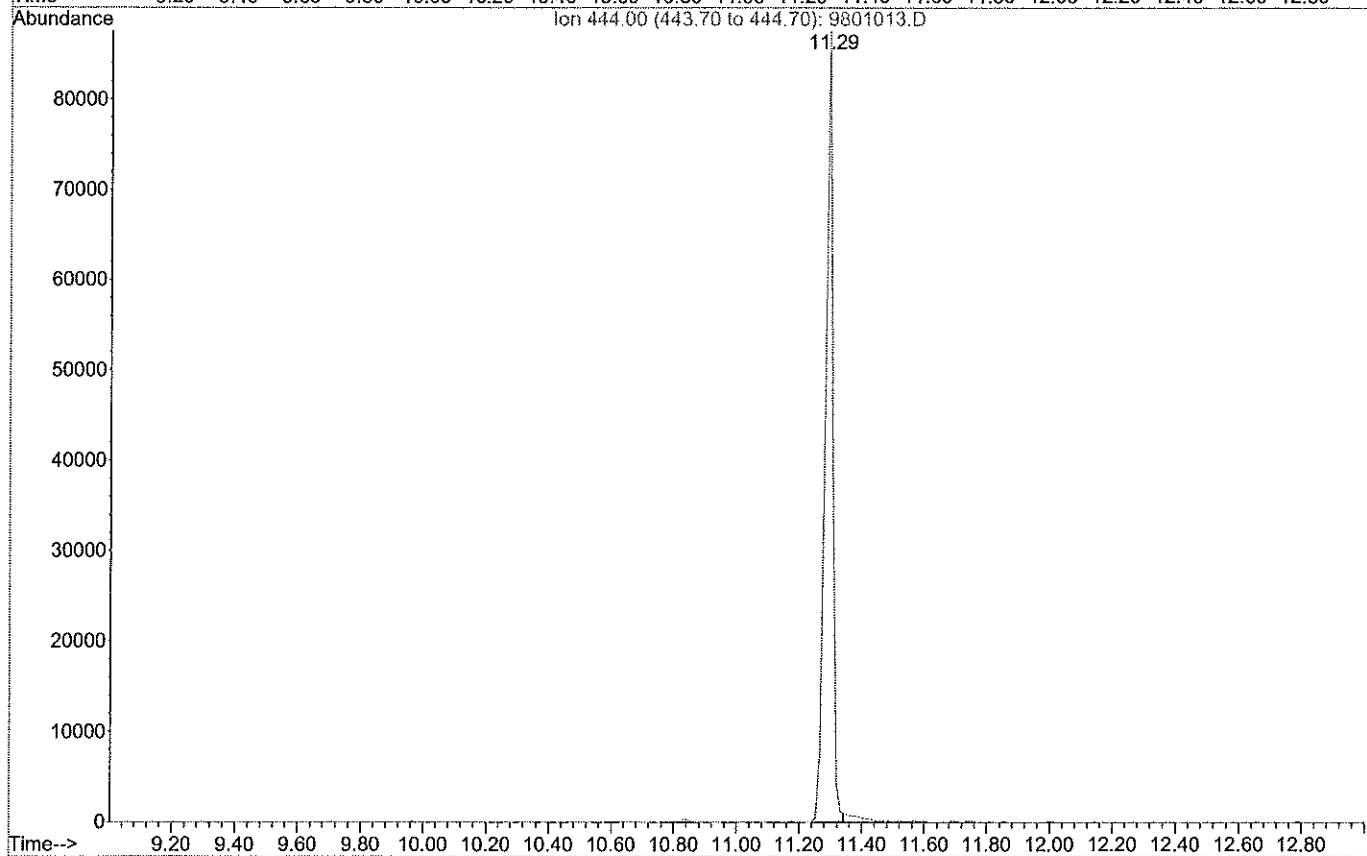
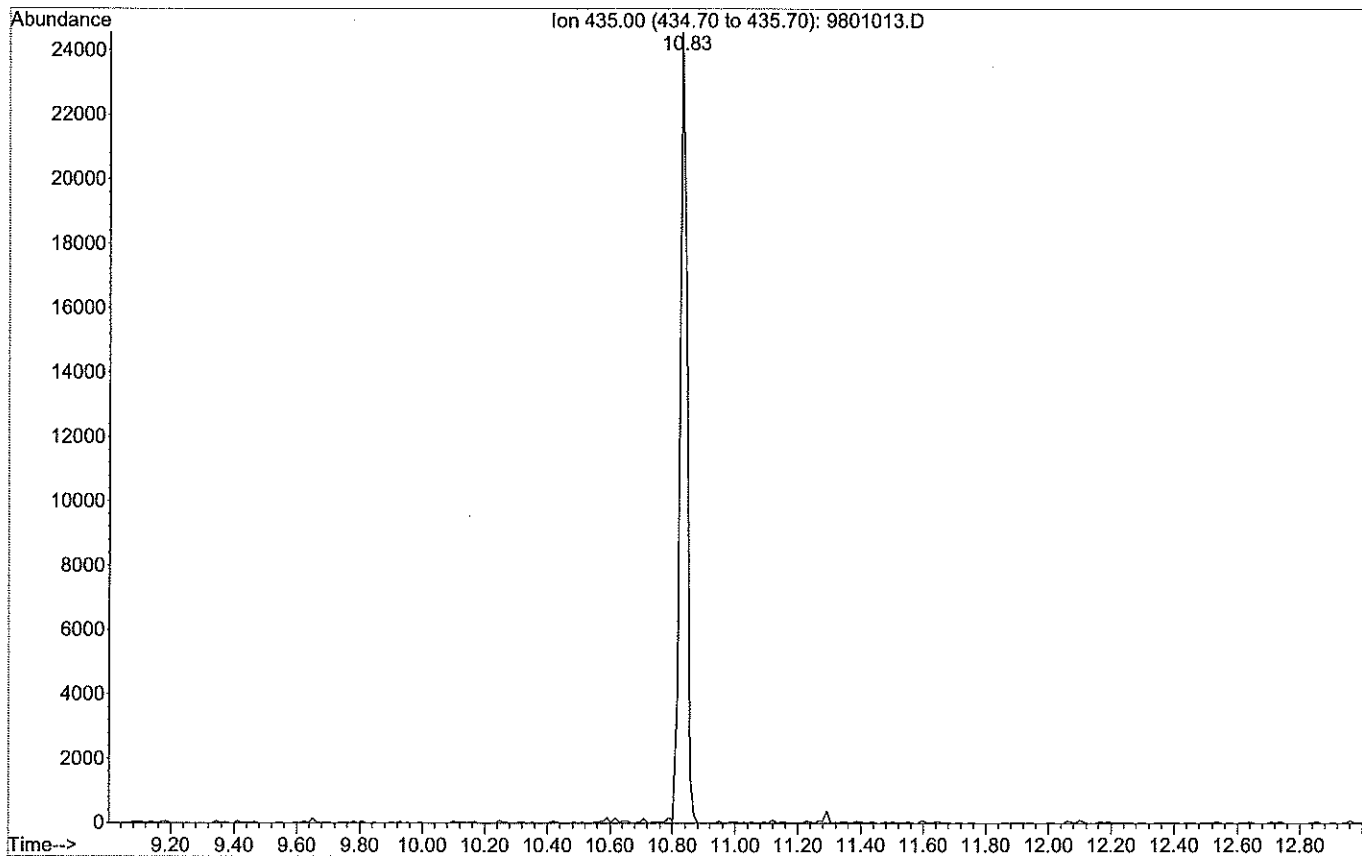
Signal : EIC Ion 444.00 (443.70 to 444.70)

peak #	R.T. min	first scan	max scan	last scan	PK TY	peak height	corr. area	corr. % max.	% of total
1	11.292	579	583	586	M	35353	624081	100.00%	100.000%

Sum of corrected areas: 624081

OCPULSIM.M Mon Jan 18 09:59:26 2016

File : C:\MSDCHEM\1\DATA\2016\1601\160115\9801013.D
Operator : JFM
Acquired : 15 Jan 2016 19:53 using AcqMethod SCREENANABOS-ESTERS.M
Instrument : Instrument #1
Sample Name: Calib 200mg/L - EI 100ng
Misc Info :
Vial Number: 98



Area Percent Report

Data Path : C:\MSDCHEM\1\DATA\2016\1601\160115\
 Data File : 9801013.D
 Acq On : 15 Jan 2016 19:53
 Operator : JFM
 Sample : Calib 200mg/L - EI 100ng
 Misc :
 ALS Vial : 98 Sample Multiplier: 1

Integration Parameters: autoint1.e
 Integrator: ChemStation

Method : C:\MSDCHEM\1\METHODS\GC O-C SYLILES\OCPULSIM.M
 Title :

Signal : EIC Ion 435.00 (434.70 to 435.70)

peak #	R.T. min	first scan	max scan	last scan	PK TY	peak height	corr. area	corr. % max.	% of total
1	10.829	546	548	552	M	25244	372606	100.00%	100.000%

Sum of corrected areas: 372606

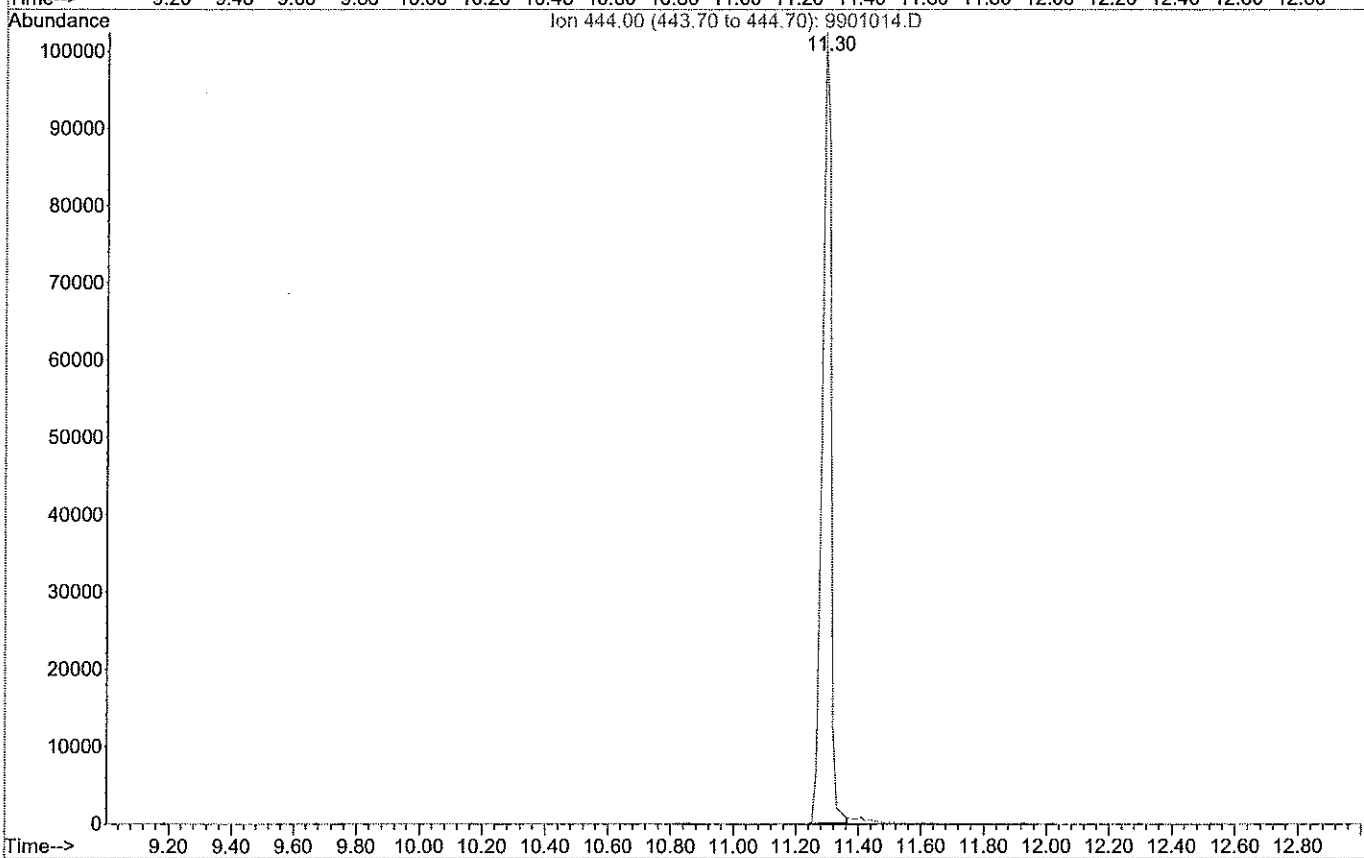
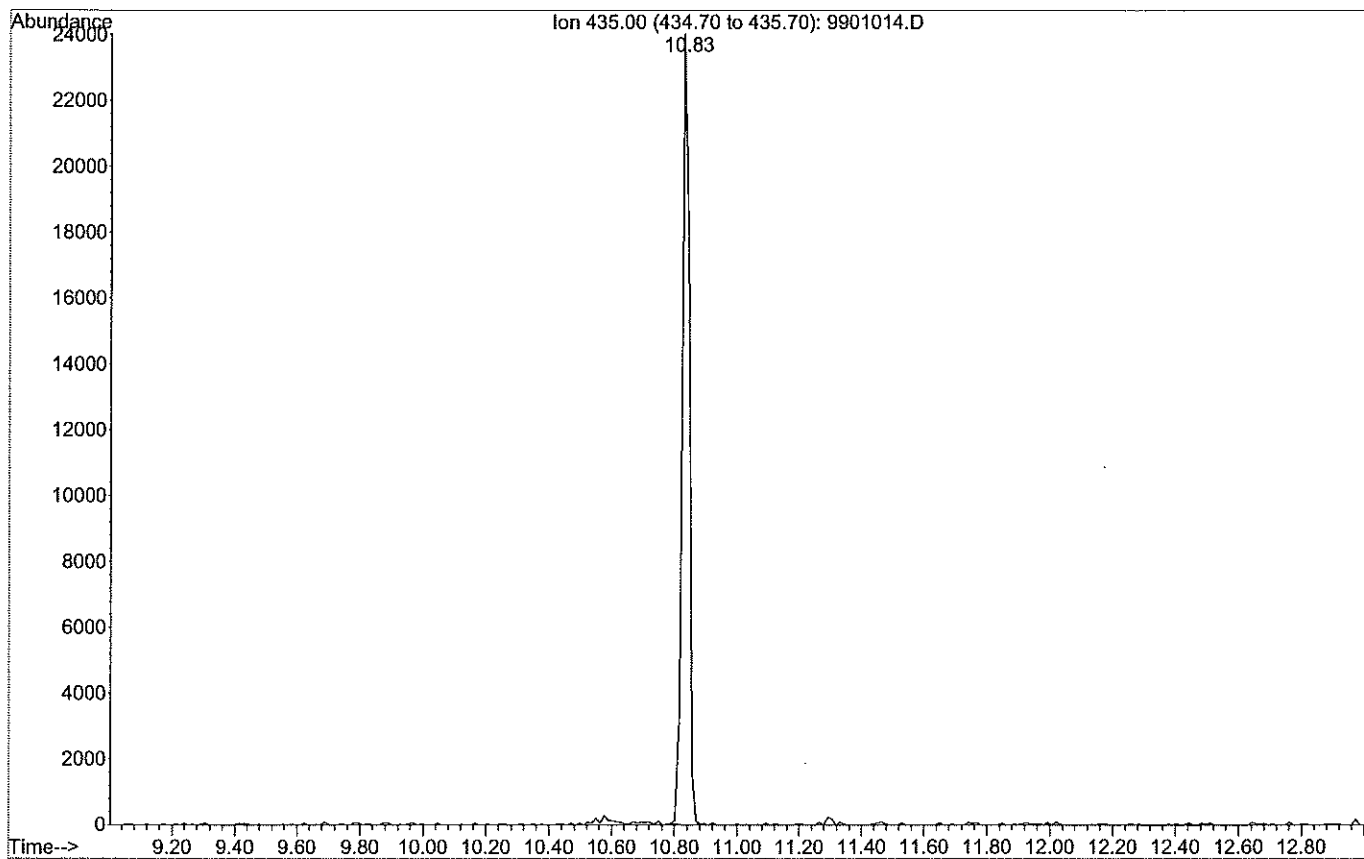
Signal : EIC Ion 444.00 (443.70 to 444.70)

peak #	R.T. min	first scan	max scan	last scan	PK TY	peak height	corr. area	corr. % max.	% of total
1	11.292	579	583	587	M	87623	1457815	100.00%	100.000%

Sum of corrected areas: 1457815

OCPULSIM.M Mon Jan 18 10:00:05 2016

File : C:\MSDCHEM\1\DATA\2016\1601\160115\9901014.D
Operator : JFM
Acquired : 15 Jan 2016 20:28 using AcqMethod SCREENANABOS-ESTERS.M
Instrument : Instrument #1
Sample Name: Calib 300mg/L - EI 100ng
Misc Info :
Vial Number: 99



Area Percent Report

Data Path : C:\MSDCHEM\1\DATA\2016\1601\160115\
 Data File : 9901014.D
 Acq On : 15 Jan 2016 20:28
 Operator : JFM
 Sample : Calib 300mg/L - EI 100ng
 Misc :
 ALS Vial : 99 Sample Multiplier: 1

Integration Parameters: autoint1.e
 Integrator: ChemStation

Method : C:\MSDCHEM\1\METHODS\GC O-C SYLILES\OCPULSIM.M
 Title :

Signal : EIC Ion 435.00 (434.70 to 435.70)

peak #	R.T. min	first scan	max scan	last scan	PK TY	peak height	corr. area	corr. % max.	% of total
1	10.828	545	548	551	M	24959	373036	100.00%	100.000%

Sum of corrected areas: 373036

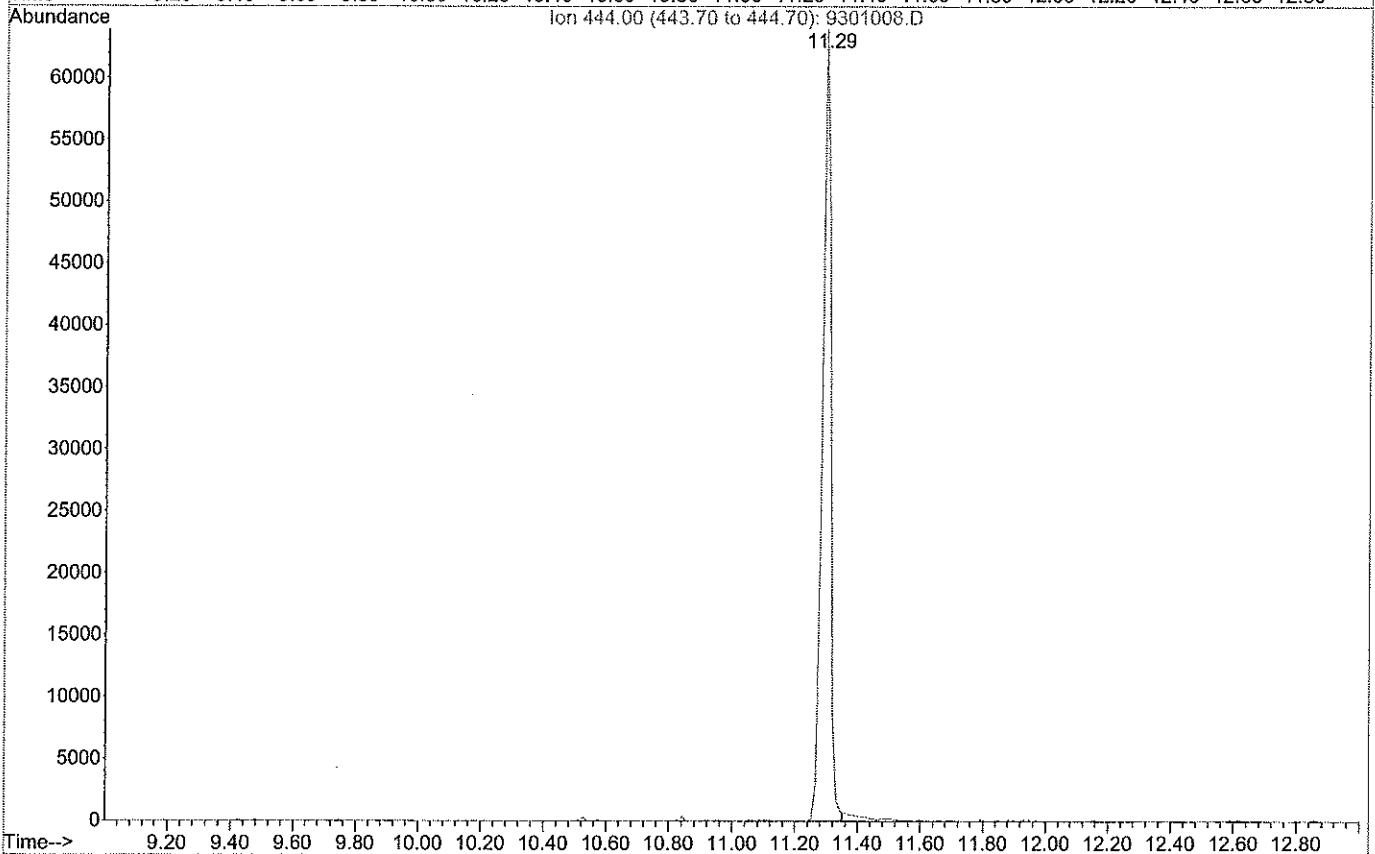
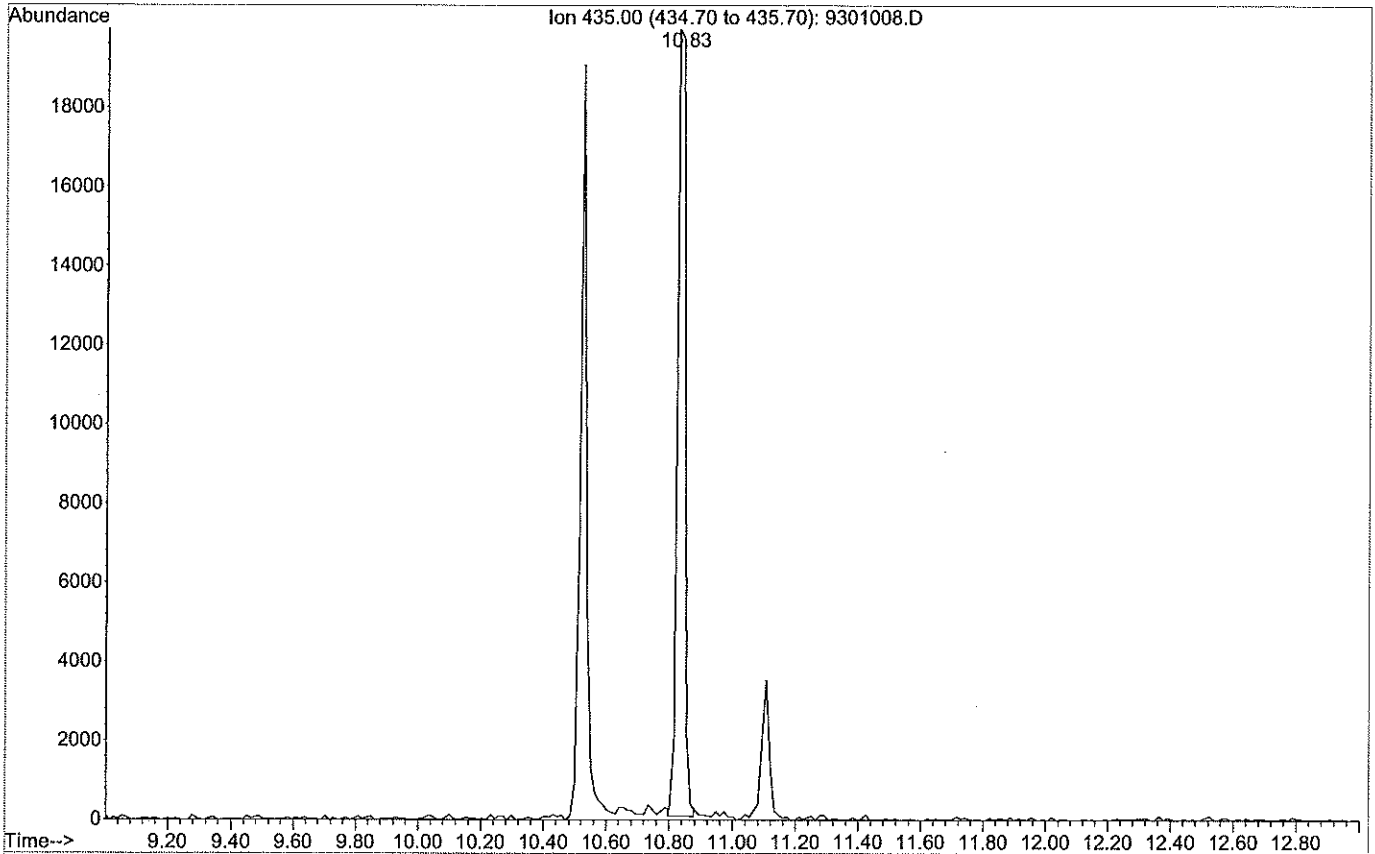
Signal : EIC Ion 444.00 (443.70 to 444.70)

peak #	R.T. min	first scan	max scan	last scan	PK TY	peak height	corr. area	corr. % max.	% of total
1	11.292	579	583	588	M	105881	2045408	100.00%	100.000%

Sum of corrected areas: 2045408

OCPULSIM.M Mon Jan 18 10:00:45 2016

File :C:\MSDCHEM\1\DATA\2016\1601\160115\9301008.D
Operator : JFM
Acquired : 15 Jan 2016 16:53 using AcqMethod SCREENANABOS-ESTERS.M
Instrument : Instrument #1
Sample Name: 15-09430 - EI 100ng
Misc Info :
Vial Number: 93



Area Percent Report

Data Path : C:\MSDCHEM\1\DATA\2016\1601\160115\
 Data File : 9301008.D
 Acq On : 15 Jan 2016 16:53
 Operator : JFM
 Sample : 15-09430 - EI 100ng
 Misc :
 ALS Vial : 93 Sample Multiplier: 1

Integration Parameters: autoint1.e
 Integrator: ChemStation

Method : C:\MSDCHEM\1\METHODS\GC O-C SYLILES\OCPULSIM.M
 Title :

Signal : EIC Ion 435.00 (434.70 to 435.70)

peak #	R.T. min	first scan	max scan	last scan	PK TY	peak height	corr. area	corr. % max.	% of total
1	10.829	546	548	552	M	22058	349011	100.00%	100.000%

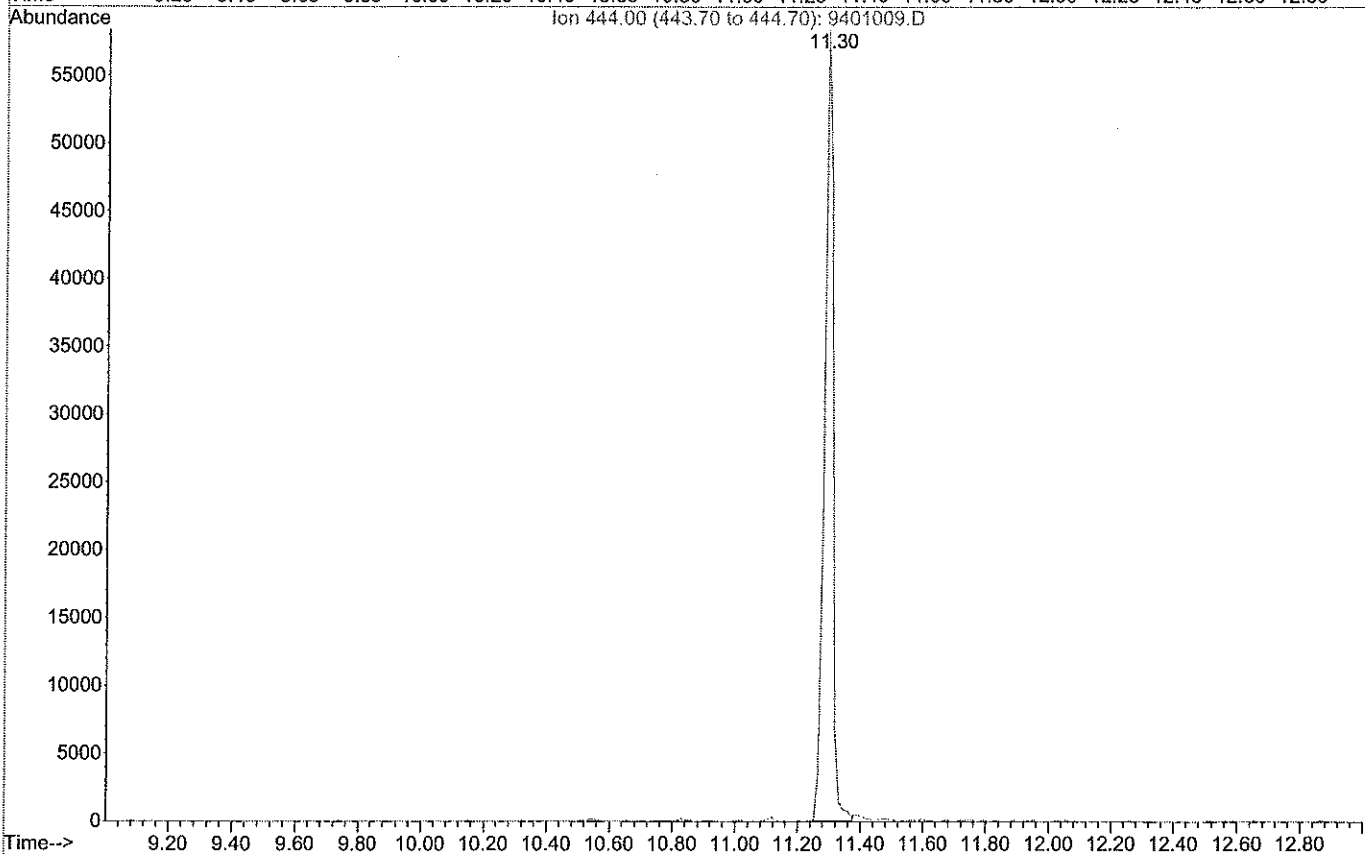
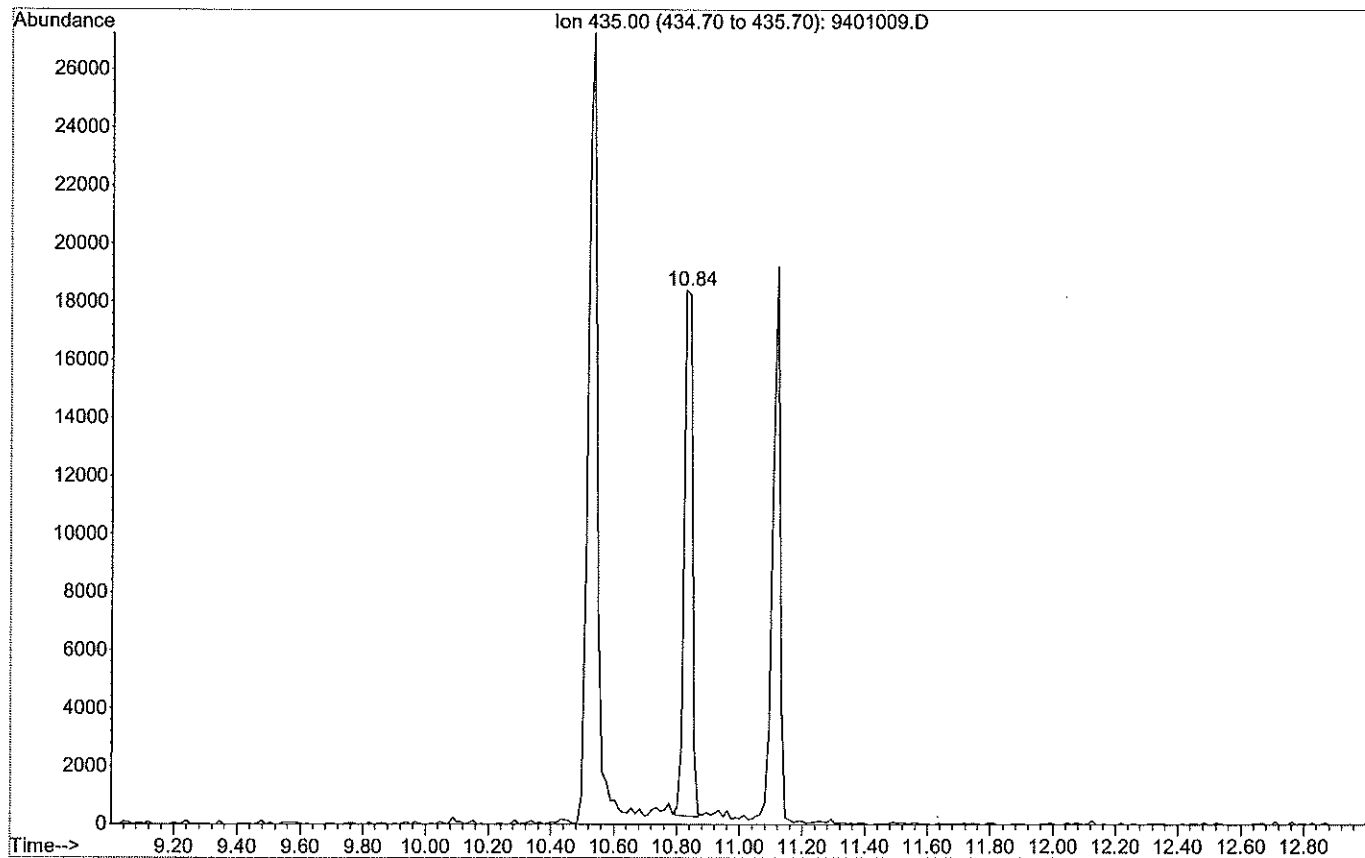
Sum of corrected areas: 349011

Signal : EIC Ion 444.00 (443.70 to 444.70)

peak #	R.T. min	first scan	max scan	last scan	PK TY	peak height	corr. area	corr. % max.	% of total
1	11.292	579	583	587	M	65218	1205477	100.00%	100.000%

Sum of corrected areas: 1205477

File : C:\MSDCHEM\1\DATA\2016\1601\160115\9401009.D
Operator : JFM
Acquired : 15 Jan 2016 17:28 using AcqMethod SCREENANABOS-ESTERS.M
Instrument : Instrument #1
Sample Name: 15-09431 - EI 100ng
Misc Info :
Vial Number: 94



Area Percent Report

Data Path : C:\MSDCHEM\1\DATA\2016\1601\160115\
 Data File : 9401009.D
 Acq On : 15 Jan 2016 17:28
 Operator : JFM
 Sample : 15-09431 - EI 100ng
 Misc :
 ALS Vial : 94 Sample Multiplier: 1

Integration Parameters: autoint1.e
 Integrator: ChemStation

Method : C:\MSDCHEM\1\METHODS\GC O-C SYLILES\OCPULSIM.M
 Title :

Signal : EIC Ion 435.00 (434.70 to 435.70)

peak #	R.T. min	first scan	max scan	last scan	PK TY	peak height	corr. area	corr. % max.	% of total
1	10.829	545	548	551	M2	20003	326909	100.00%	100.000%

Sum of corrected areas: 326909

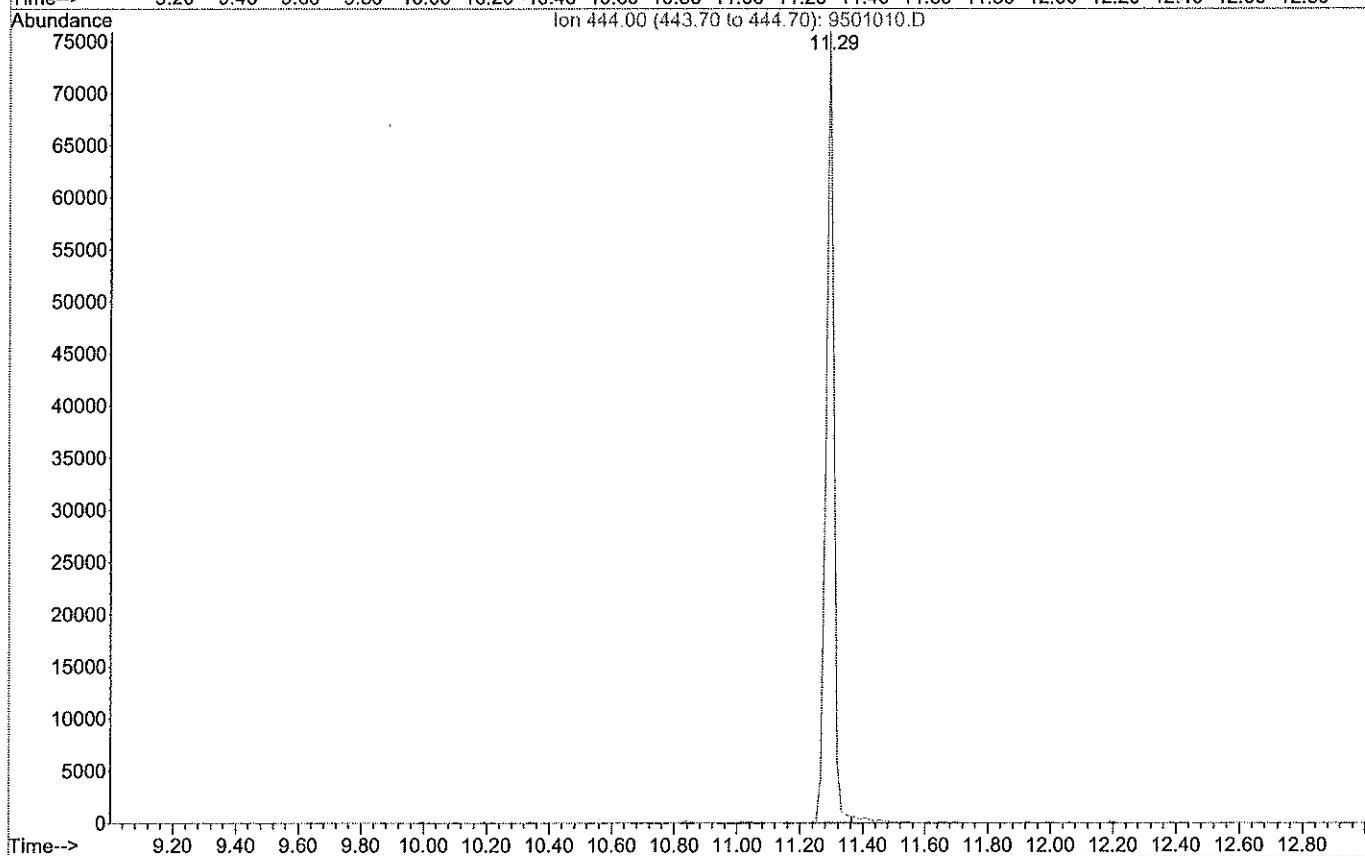
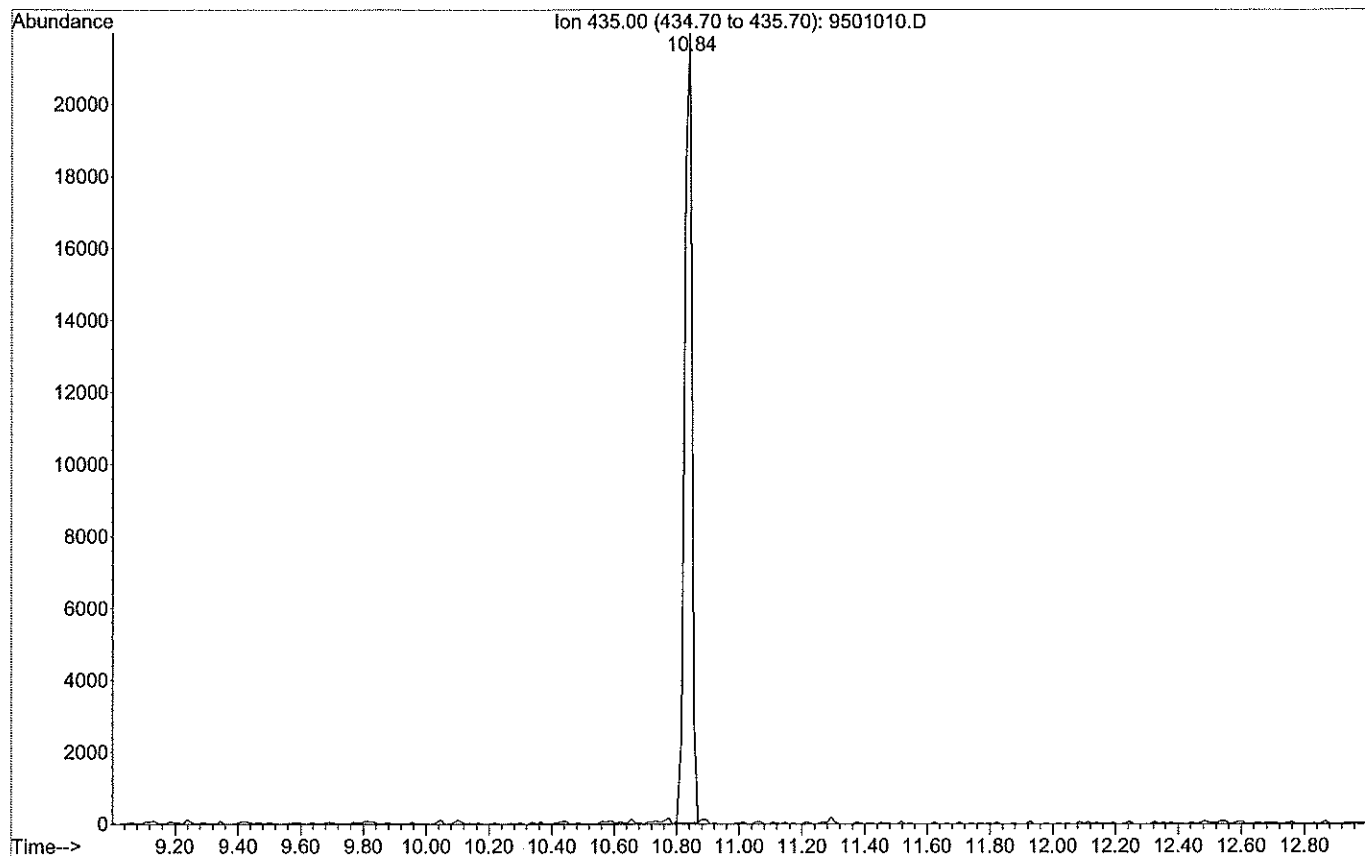
Signal : EIC Ion 444.00 (443.70 to 444.70)

peak #	R.T. min	first scan	max scan	last scan	PK TY	peak height	corr. area	corr. % max.	% of total
1	11.292	580	583	589	M	59927	1129217	100.00%	100.000%

Sum of corrected areas: 1129217

OCPULSIM.M Mon Jan 18 09:57:12 2016

File : C:\MSDCHEM\1\DATA\2016\1601\160115\9501010.D
Operator : JFM
Acquired : 15 Jan 2016 18:05 using AcqMethod SCREENANABOS-ESTERS.M
Instrument : Instrument #1
Sample Name: 15-09432 - EI 100ng
Misc Info :
Vial Number: 95



Area Percent Report

Data Path : C:\MSDCHEM\1\DATA\2016\1601\160115\
 Data File : 9501010.D
 Acq On : 15 Jan 2016 18:05
 Operator : JFM
 Sample : 15-09432 - EI 100ng
 Misc :
 ALS Vial : 95 Sample Multiplier: 1

Integration Parameters: autoint1.e
 Integrator: ChemStation

Method : C:\MSDCHEM\1\METHODS\GC O-C SYLILES\OCPULSIM.M
 Title :

Signal : EIC Ion 435.00 (434.70 to 435.70)

peak #	R.T. min	first scan	max scan	last scan	PK TY	peak height	corr. area	corr. % max.	% of total
1	10.842	546	549	551	M	23225	361547	100.00%	100.000%

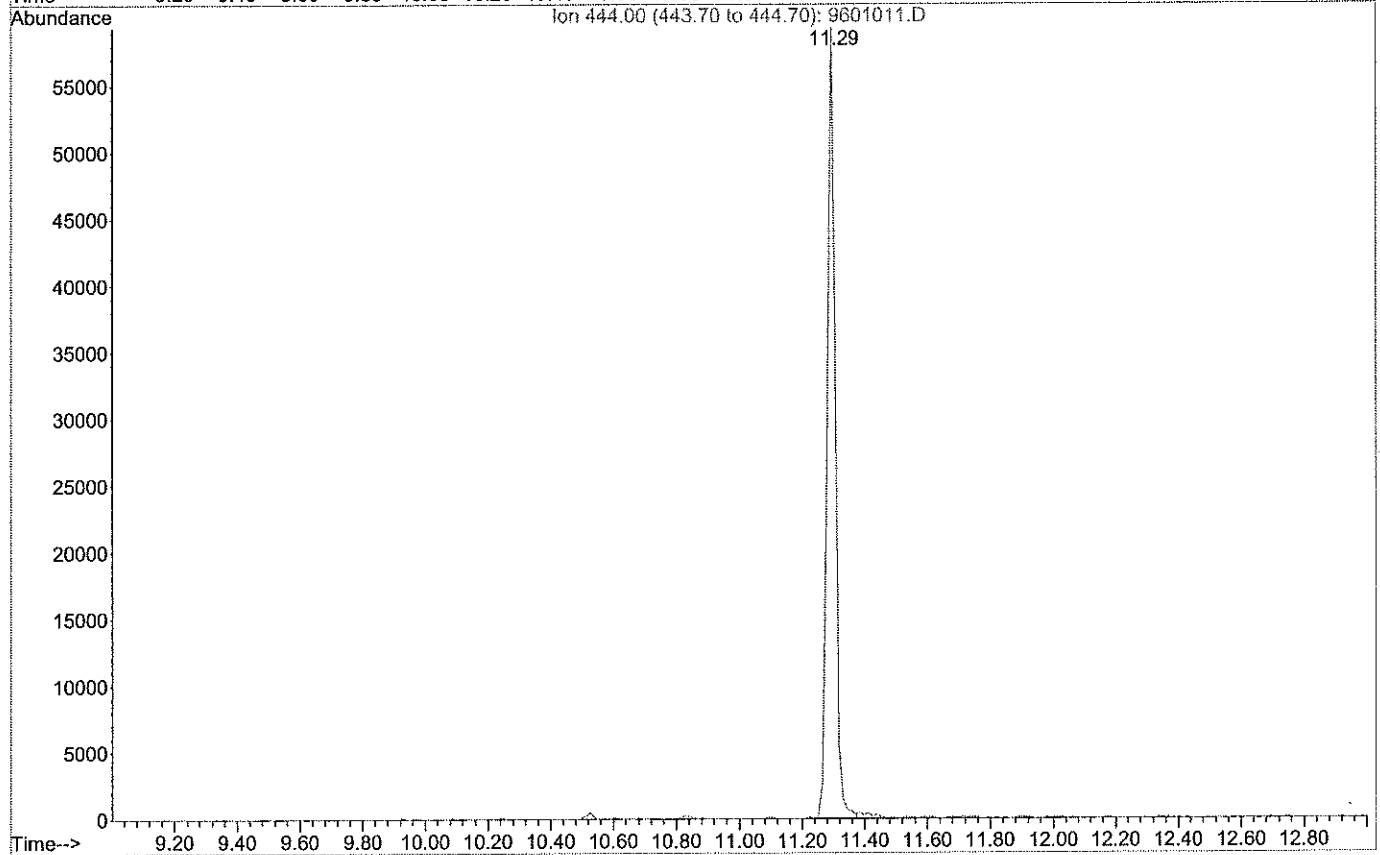
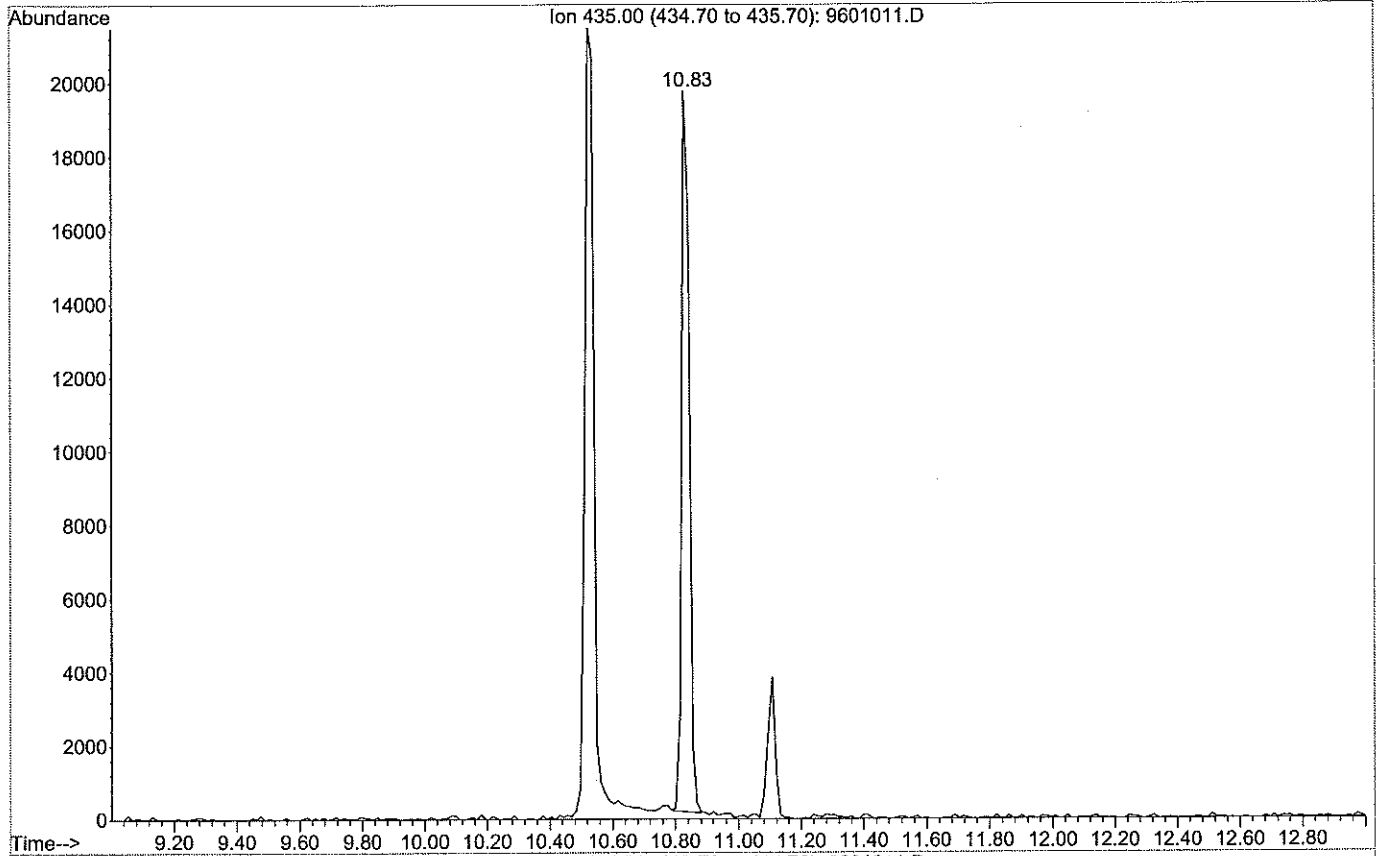
Sum of corrected areas: 361547

Signal : EIC Ion 444.00 (443.70 to 444.70)

peak #	R.T. min	first scan	max scan	last scan	PK TY	peak height	corr. area	corr. % max.	% of total
1	11.292	579	583	588	M	76135	1327761	100.00%	100.000%

Sum of corrected areas: 1327761

File :C:\MSDCHEM\1\DATA\2016\1601\160115\9601011.D
Operator : JFM
Acquired : 15 Jan 2016 18:41 using AcqMethod SCREENANABOS-ESTERS.M
Instrument : Instrument #1
Sample Name: 15-09433 - EI 100ng
Misc Info :
Vial Number: 96



Area Percent Report

Data Path : C:\MSDCHEM\1\DATA\2016\1601\160115\
Data File : 9601011.D
Acq On : 15 Jan 2016 18:41
Operator : JFM
Sample : 15-09433 - EI 100ng
Misc :
ALS Vial : 96 Sample Multiplier: 1

Integration Parameters: autoint1.e
Integrator: ChemStation

Method : C:\MSDCHEM\1\METHODS\GC O-C SYLILES\OCPULSIM.M
Title :

Signal : EIC Ion 435.00 (434.70 to 435.70)

peak #	R.T. min	first scan	max scan	last scan	PK TY	peak height	corr. area	corr. % max.	% of total
1	10.829	545	548	552	M	20738	323677	100.00%	100.000%

Sum of corrected areas: 323677

Signal : EIC Ion 444.00 (443.70 to 444.70)

peak #	R.T. min	first scan	max scan	last scan	PK TY	peak height	corr. area	corr. % max.	% of total
1	11.292	579	583	589	M	59594	1067947	100.00%	100.000%

Sum of corrected areas: 1067947