

Anabolic Lab™

Analytical Lab Testing for
Anabolic Steroid Harm Reduction

<http://anaboliclab.com>

Lab Report Raw Data – December 17, 2015

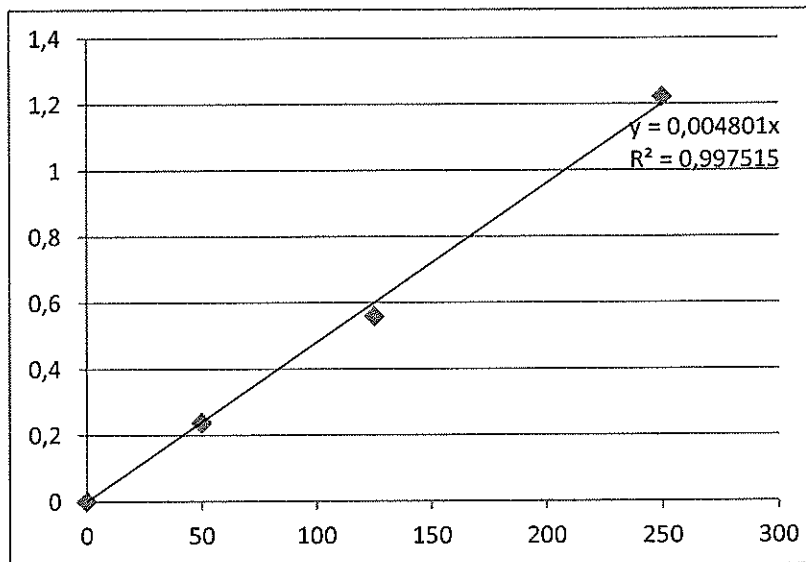
Drostanolone Propionate

- 15-08140 [Alpha Pharma Mastebolin](#)
- 15-08141 [AM Tech Pharma Mastam Propionate](#)
- 15-08142 [Dragon Pharma Masteron](#)
- 15-08143 [Gen-Shi Labs Masteron 500](#)
- 15-08144 [Geneza Pharma GP Mast 100](#)
- 15-08145 [Jintani Labs Drostanolone Propionate](#)
- 15-08146 [Noble Labs Masteron Propionate](#)
- 15-08147 [Pharmacom PHARMA Dro P100](#)
- 15-08149 [Sciroxx Labs Mastodex Propionate 100](#)
- 15-08150 [Shree Venkatesh Masterbol 150](#)
- 15-08151 [Vermodje Mastever](#)

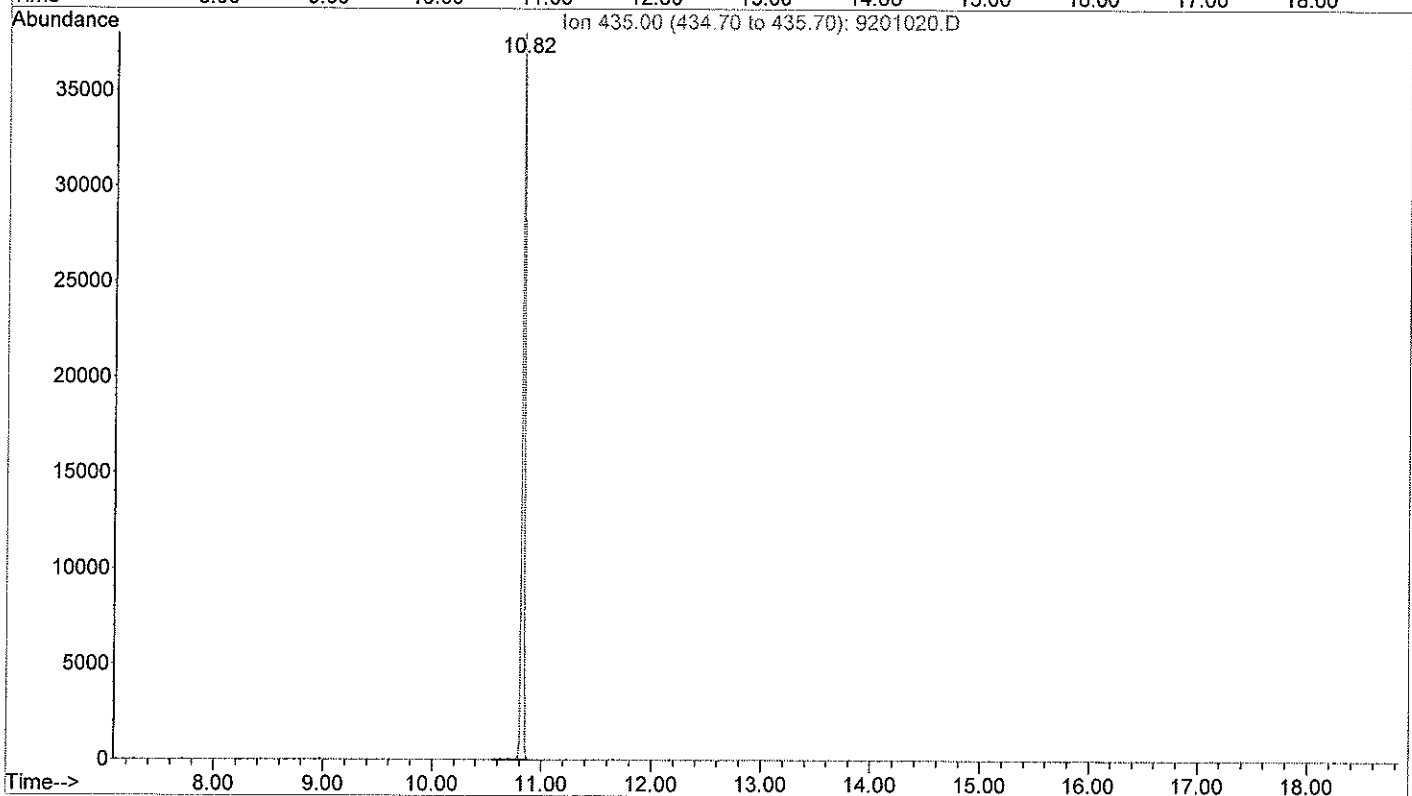
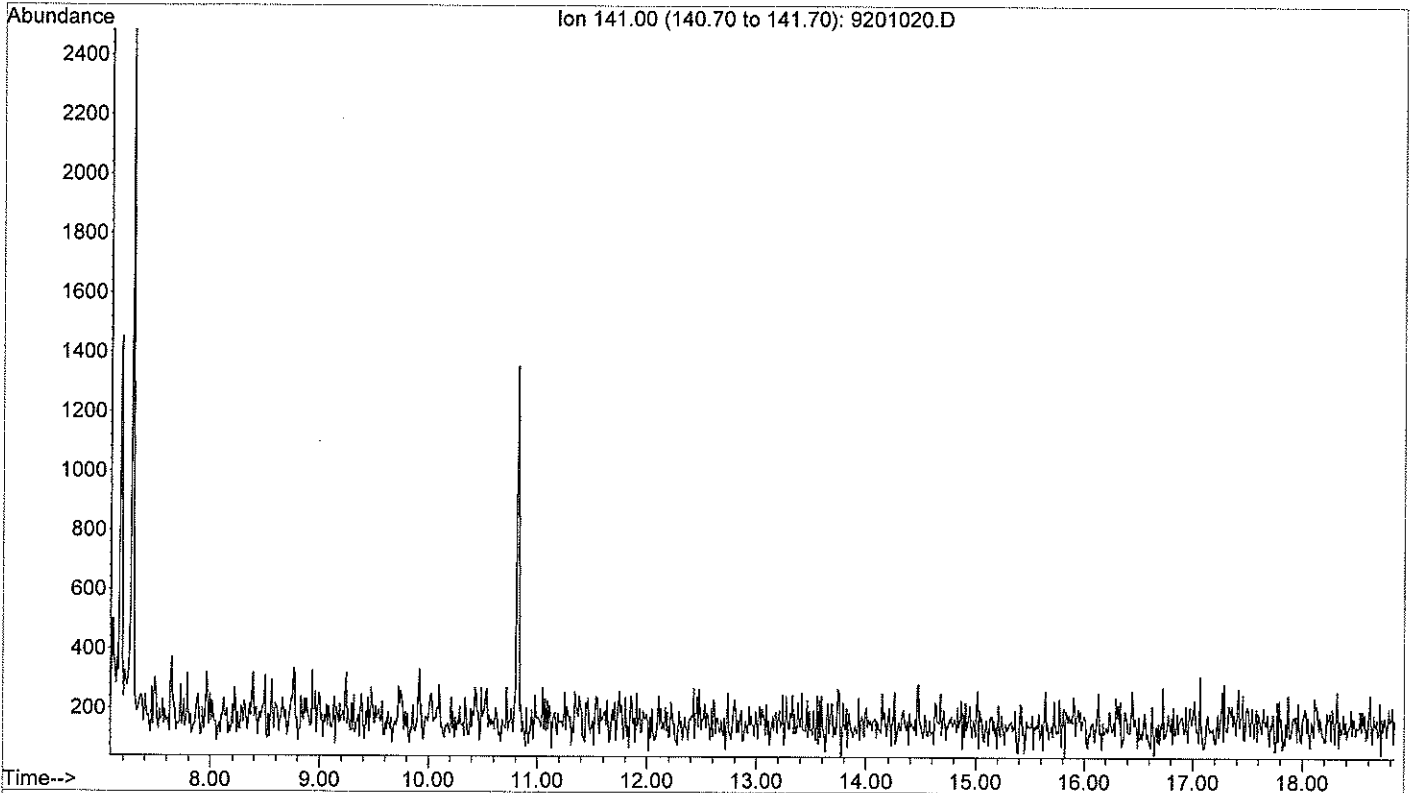
If you like this report, please visit [our website](#) to find out how you can support independent and objective lab testing.

Calibration	
Concentration g/L	Aire Mol/ Aire EI
0	0
50	0,238
125	0,559
250	1,221

Echantillons		
	Aire Mol/ Aire EI	Concentration g/L
15-08240	0,400	83
15-08241	0,351	73
15-08242	0,529	110
15-08243	0,590	123
15-08244	0,806	168
15-08245	0,578	120
15-08246	0,000	0
15-08247	0,450	94
15-08249	0,555	116
15-08250	0,562	117
15-08251	0,355	74



File :C:\MSDCHEM\1\DATA\2015\1512\151217\9201020.D
Operator : JFM
Acquired : 18 Dec 2015 2:43 using AcqMethod DRPRO210.M
Instrument : Instrument #1
Sample Name: L0 - EI 100ng - dérivé
Misc Info :
Vial Number: 92



Area Percent Report

Data Path : C:\MSDCHEM\1\DATA\2015\1512\151217\
Data File : 9201020.D
Acq On : 18 Dec 2015 2:43
Operator : JFM
Sample : L0 - EI 100ng - dérivé
Misc :
ALS Vial : 92 Sample Multiplier: 1

Integration Parameters: autoint1.e
Integrator: ChemStation

Method : C:\MSDCHEM\1\METHODS\GC O-C SYLILES\OCPULSIM.M
Title :

Signal : EIC Ion 141.00 (140.70 to 141.70)

peak #	R.T. min	first scan	max scan	last scan	PK TY	peak height	corr. area	corr. % max.	% of total
--------	----------	------------	----------	-----------	-------	-------------	------------	--------------	------------

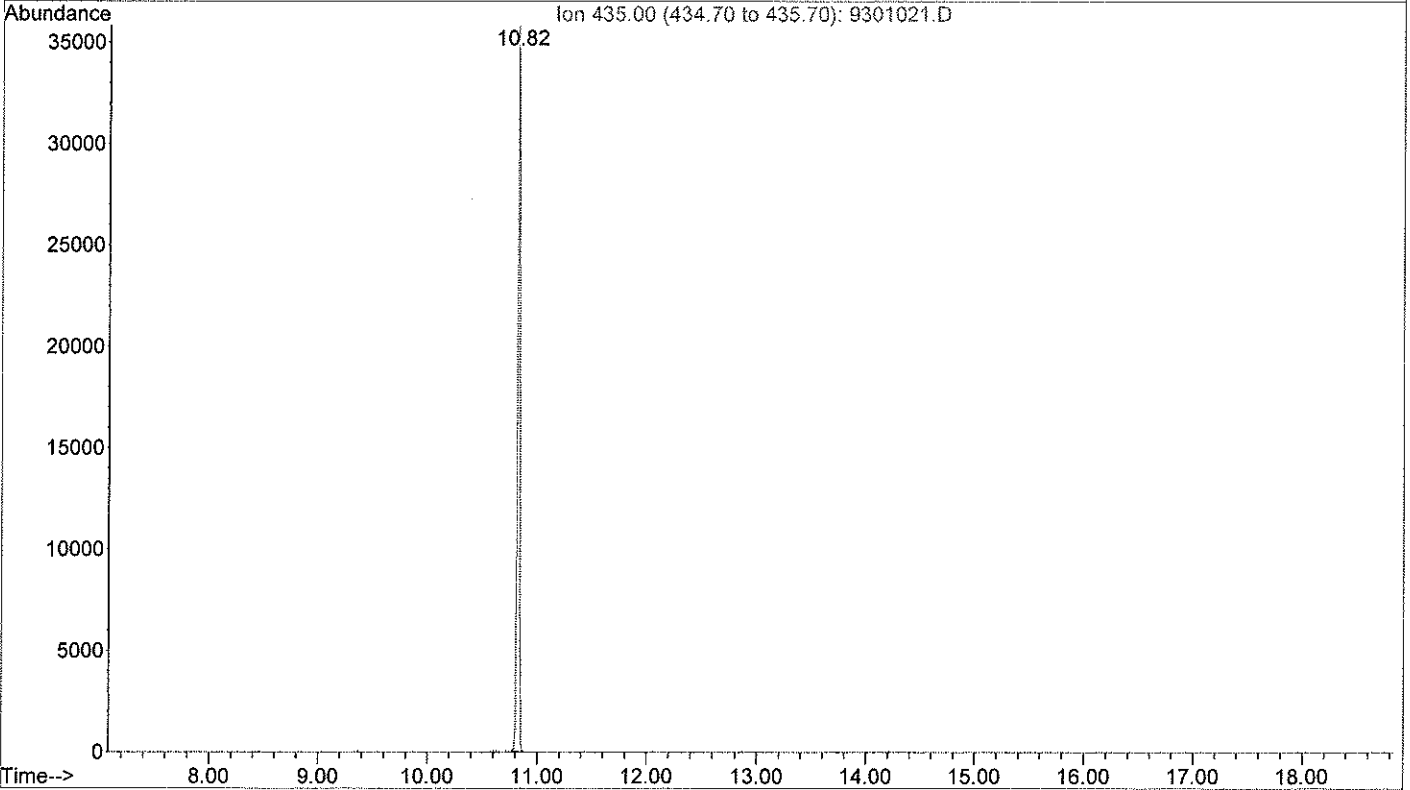
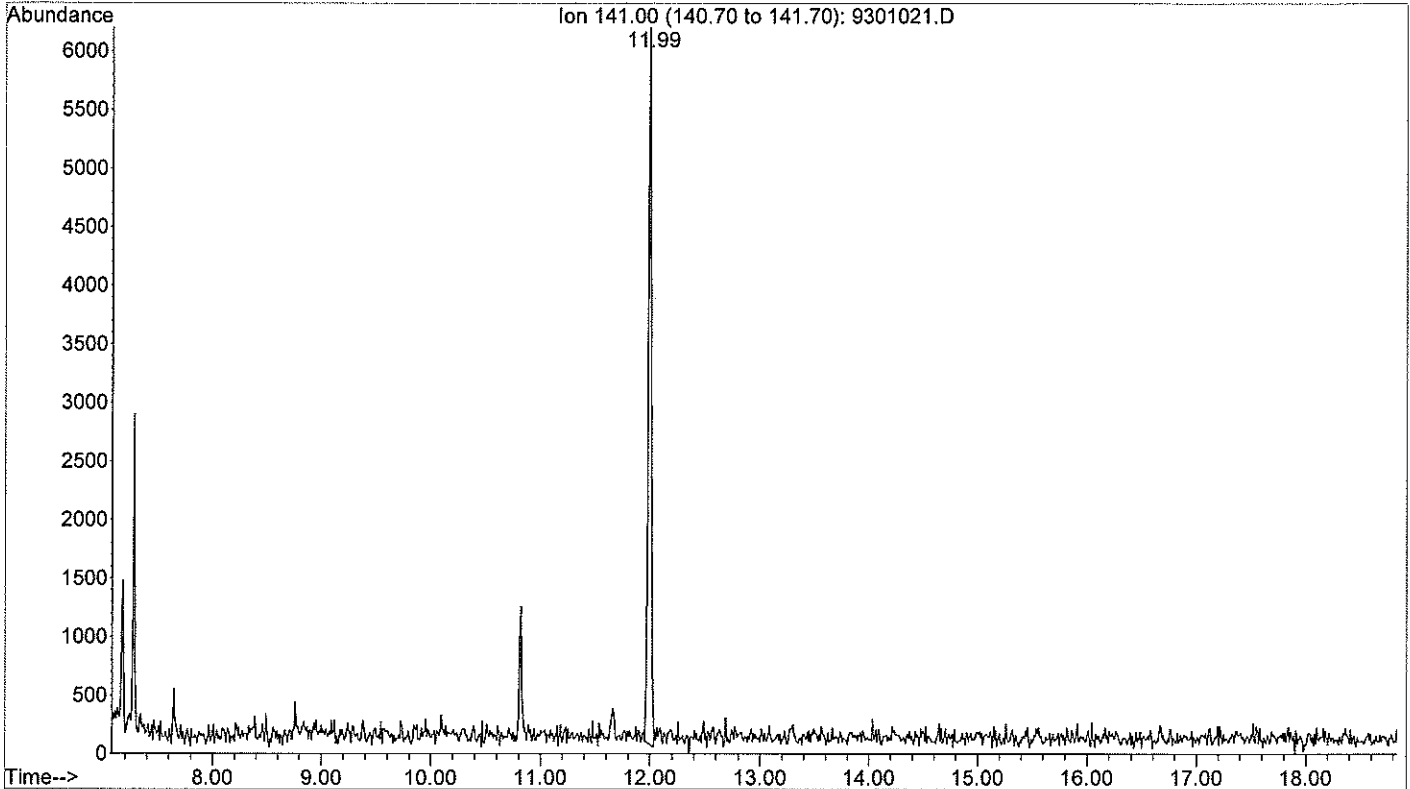
No peaks were detected using the method integration parameters!
Signal : EIC Ion 435.00 (434.70 to 435.70)

peak #	R.T. min	first scan	max scan	last scan	PK TY	peak height	corr. area	corr. % max.	% of total
1	10.821	370	373	377	M	40452	558731	100.00%	100.000%

Sum of corrected areas: 558731

OCPULSIM.M Sat Dec 19 12:28:07 2015

File :C:\MSDCHEM\1\DATA\2015\1512\151217\9301021.D
Operator : JFM
Acquired : 18 Dec 2015 3:09 using AcqMethod DRPRO210.M
Instrument : Instrument #1
Sample Name: L1 50ng - EI 100ng - dérivé
Misc Info :
Vial Number: 93



Area Percent Report

Data Path : C:\MSDCHEM\1\DATA\2015\1512\151217\
Data File : 9301021.D
Acq On : 18 Dec 2015 3:09
Operator : JFM
Sample : L1 50ng - EI 100ng - dérivé
Misc :
ALS Vial : 93 Sample Multiplier: 1

Integration Parameters: autoint1.e
Integrator: ChemStation

Method : C:\MSDCHEM\1\METHODS\GC O-C SYLILES\OCPULSIM.M
Title :

Signal : EIC Ion 141.00 (140.70 to 141.70)

peak #	R.T. min	first scan	max scan	last scan	PK TY	peak height	corr. area	corr. % max.	% of total
1	11.996	486	490	494	M2	6129	119603	100.00%	100.000%

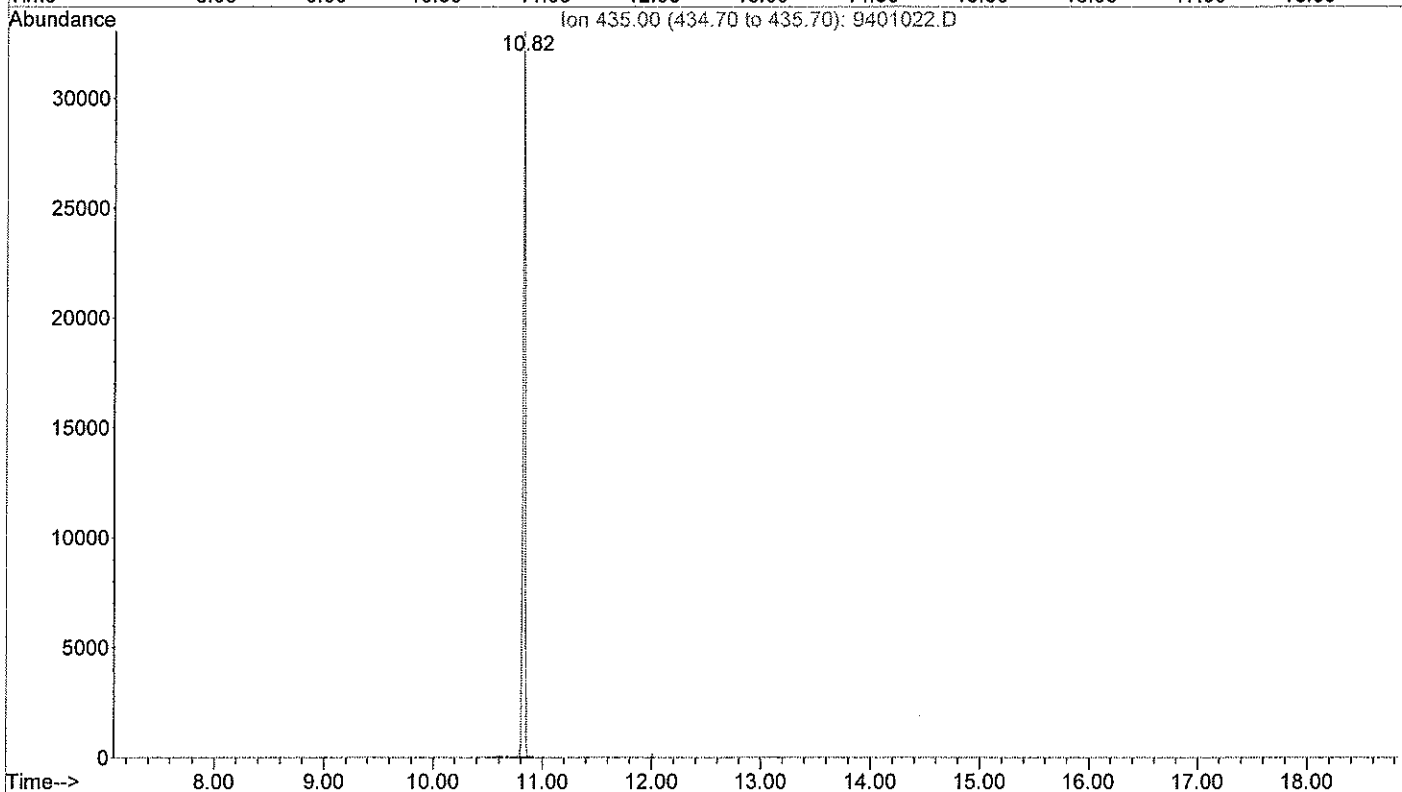
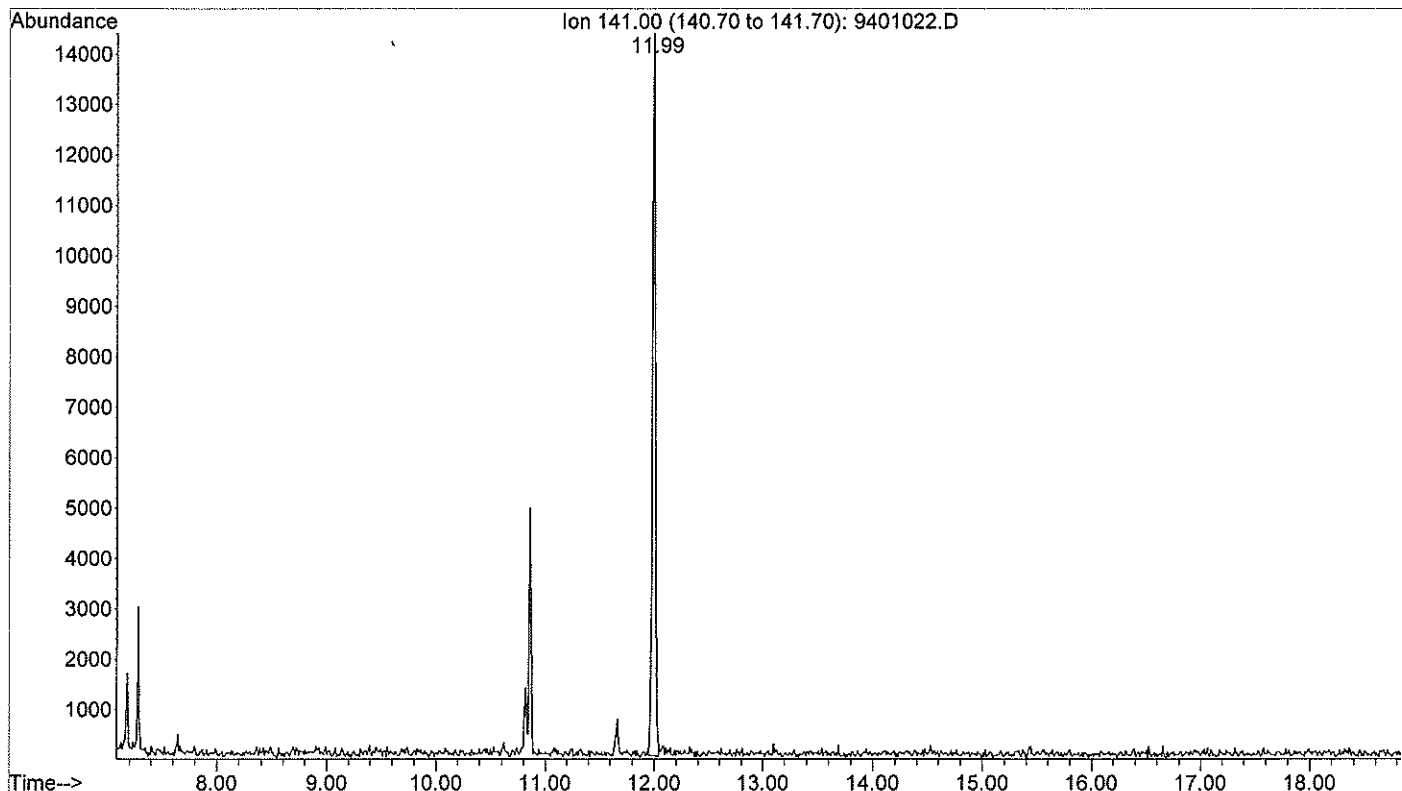
Sum of corrected areas: 119603

Signal : EIC Ion 435.00 (434.70 to 435.70)

peak #	R.T. min	first scan	max scan	last scan	PK TY	peak height	corr. area	corr. % max.	% of total
1	10.821	369	373	378	M	37361	503278	100.00%	100.000%

Sum of corrected areas: 503278

File :C:\MSDCHEM\1\DATA\2015\1512\151217\9401022.D
Operator : JFM
Acquired : 18 Dec 2015 3:34 using AcqMethod DRPRO210.M
Instrument : Instrument #1
Sample Name: L2 125ng - EI 100ng - dérivé
Misc Info :
Vial Number: 94



Area Percent Report

Data Path : C:\MSDCHEM\1\DATA\2015\1512\151217\
 Data File : 9401022.D
 Acq On : 18 Dec 2015 3:34
 Operator : JFM
 Sample : L2 125ng - EI 100ng - dérivé
 Misc :
 ALS Vial : 94 Sample Multiplier: 1

Integration Parameters: autoint1.e
 Integrator: ChemStation

Method : C:\MSDCHEM\1\METHODS\GC O-C SYLILES\OCPULSIM.M
 Title :

Signal : EIC Ion 141.00 (140.70 to 141.70)

peak #	R.T. min	first scan	max scan	last scan	PK TY	peak height	corr. area	corr. % max.	% of total
1	11.996	485	490	494	M2	14374	260432	100.00%	100.000%

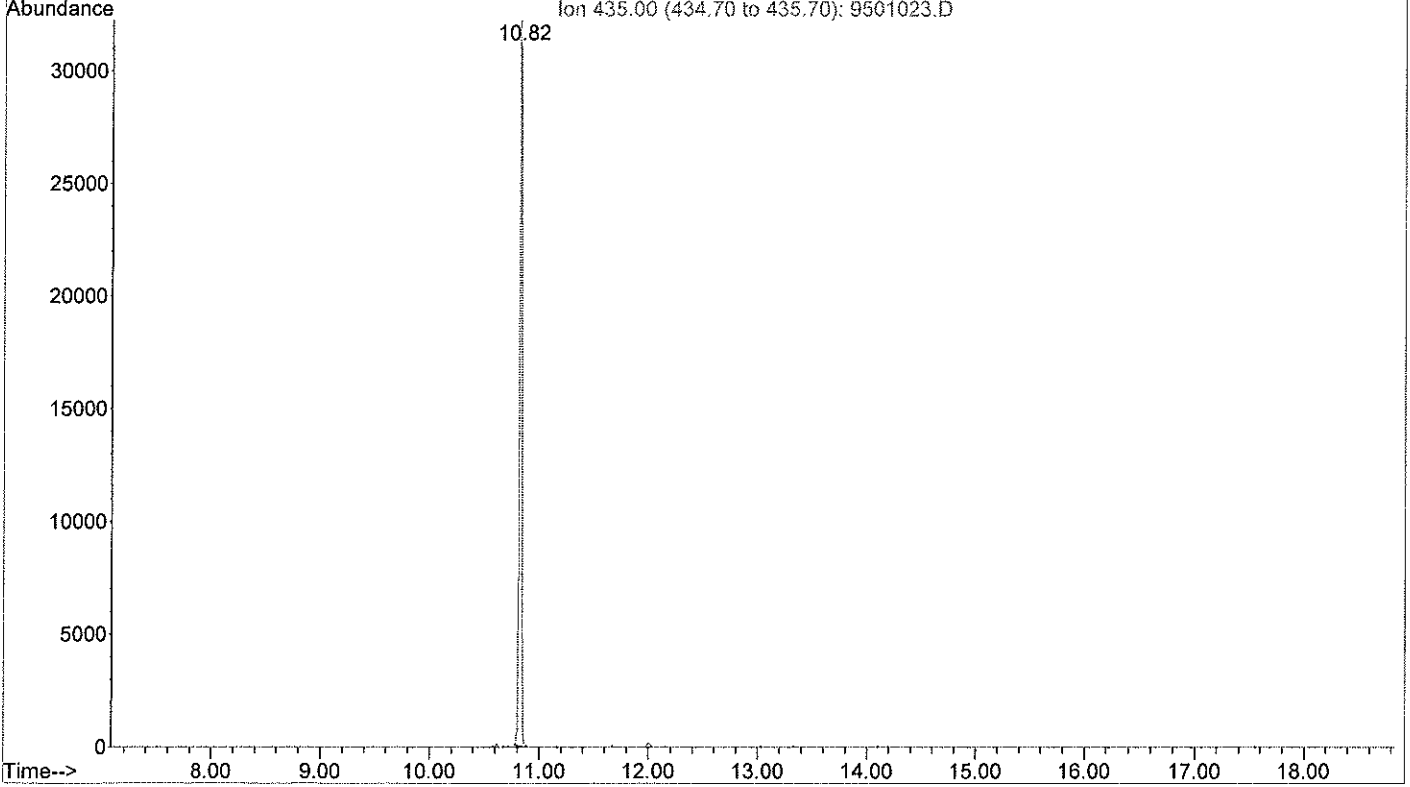
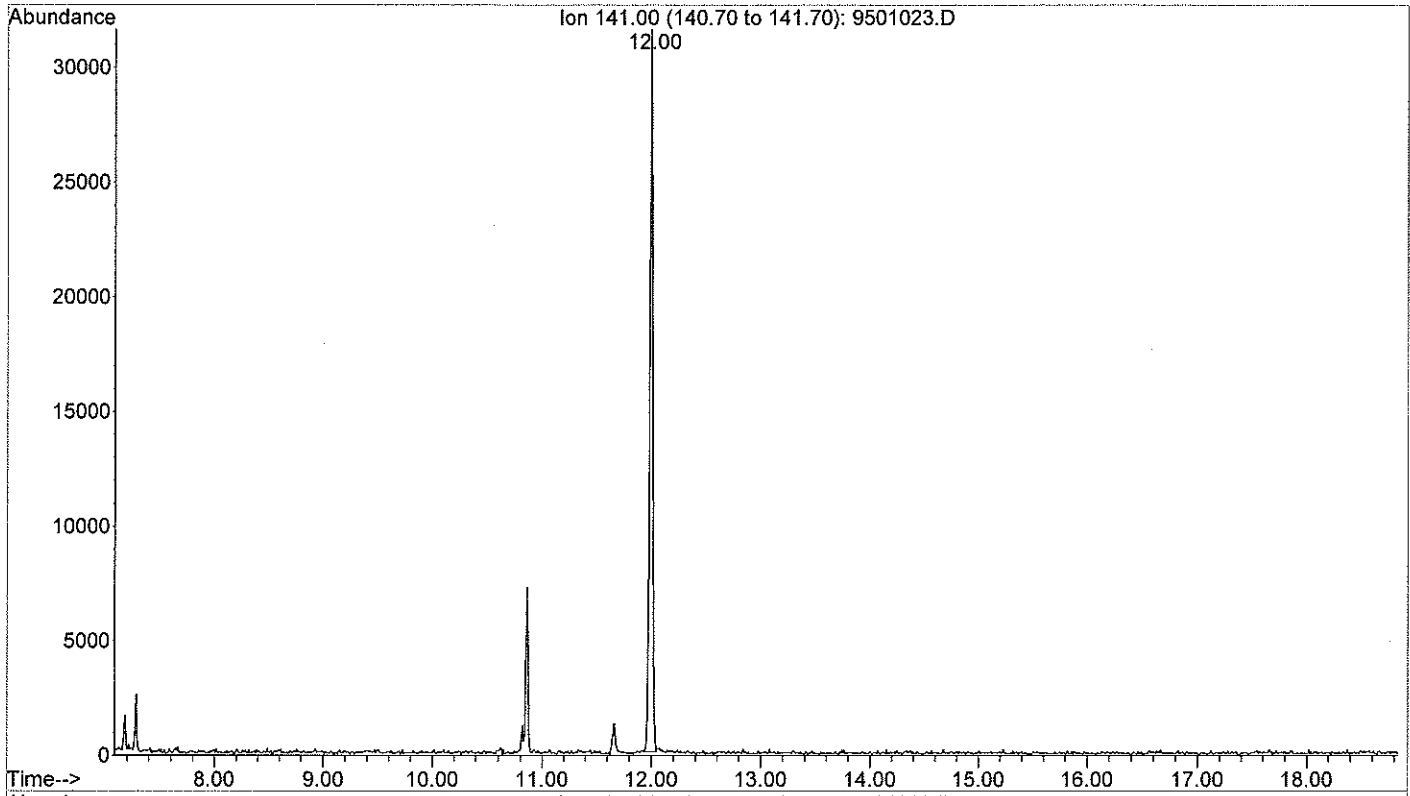
Sum of corrected areas: 260432

Signal : EIC Ion 435.00 (434.70 to 435.70)

peak #	R.T. min	first scan	max scan	last scan	PK TY	peak height	corr. area	corr. % max.	% of total
1	10.821	370	373	377	M	34624	465479	100.00%	100.000%

Sum of corrected areas: 465479

File :C:\MSDCHEM\1\DATA\2015\1512\151217\9501023.D
Operator : JFM
Acquired : 18 Dec 2015 4:00 using AcqMethod DRPRO210.M
Instrument : Instrument #1
Sample Name: L3 250ng - EI 100ng - dérivé
Misc Info :
Vial Number: 95



Area Percent Report

Data Path : C:\MSDCHEM\1\DATA\2015\1512\151217\
Data File : 9501023.D
Acq On : 18 Dec 2015 4:00
Operator : JFM
Sample : L3 250ng - EI 100ng - dérivé
Misc :
ALS Vial : 95 Sample Multiplier: 1

Integration Parameters: autoint1.e
Integrator: ChemStation

Method : C:\MSDCHEM\1\METHODS\GC O-C SYLILES\OCPULSIM.M
Title :

Signal : EIC Ion 141.00 (140.70 to 141.70)

peak #	R.T. min	first scan	max scan	last scan	PK TY	peak height	corr. area	corr. % max.	% of total
1	11.996	484	490	495	M2	31478	565728	100.00%	100.000%

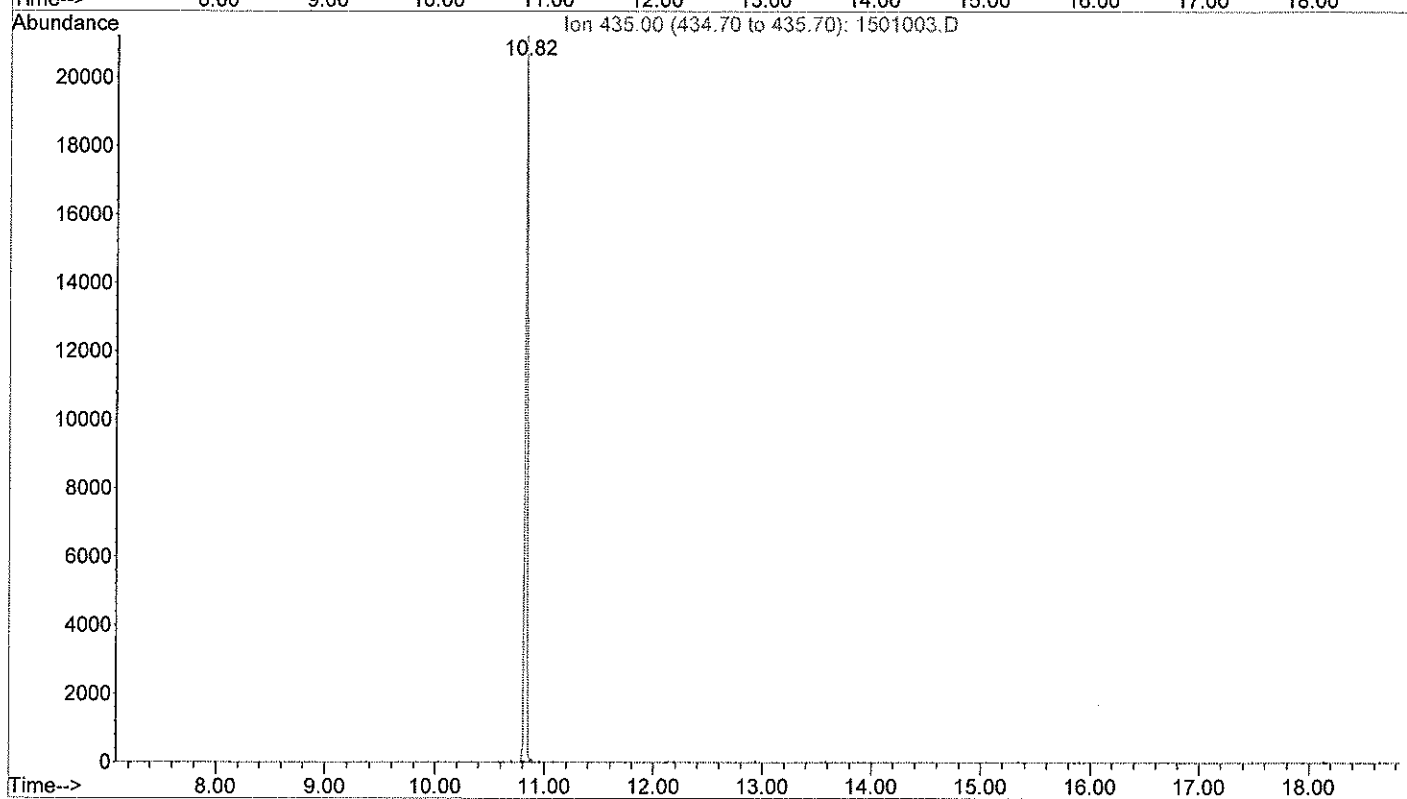
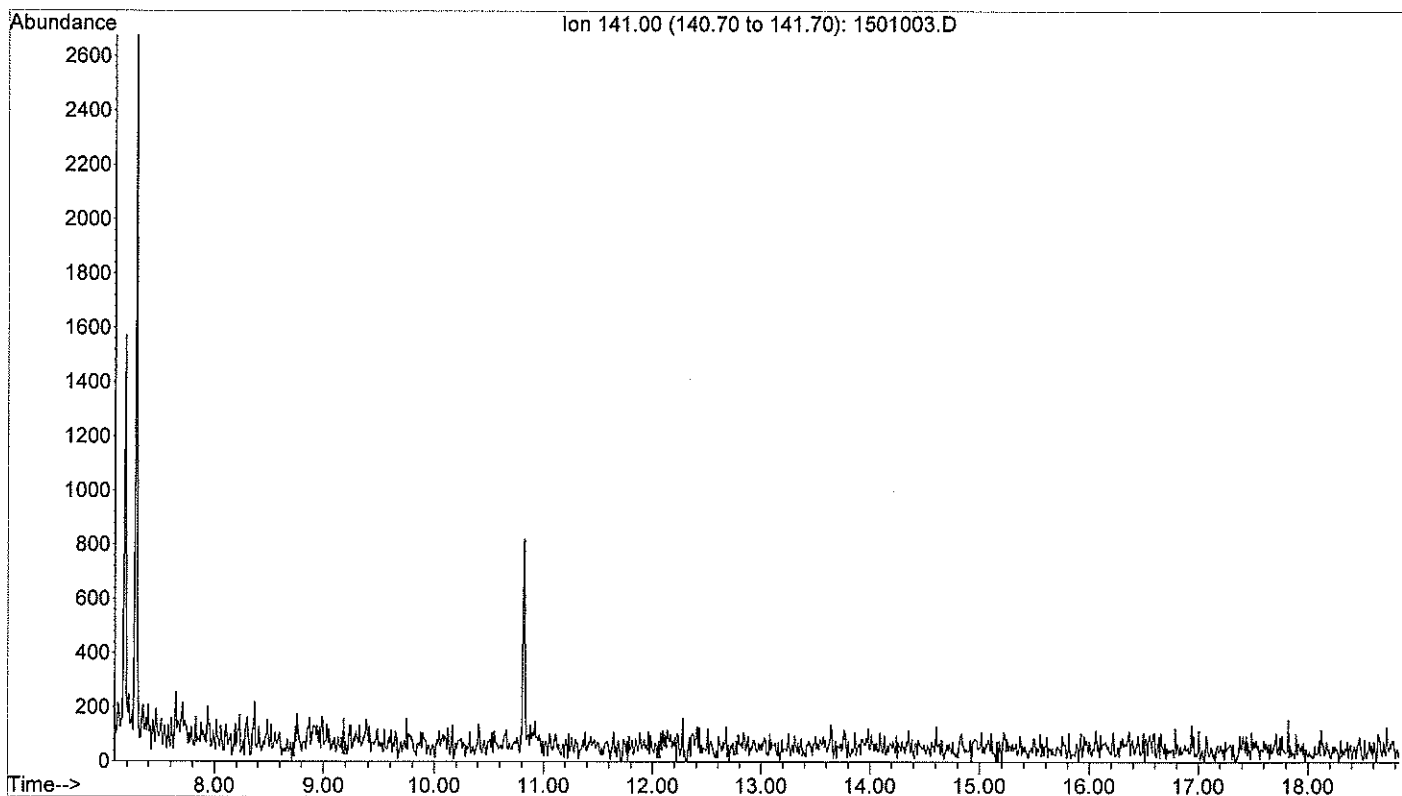
Sum of corrected areas: 565728

Signal : EIC Ion 435.00 (434.70 to 435.70)

peak #	R.T. min	first scan	max scan	last scan	PK TY	peak height	corr. area	corr. % max.	% of total
1	10.820	369	373	378	M	34194	463276	100.00%	100.000%

Sum of corrected areas: 463276

File :C:\MSDCHEM\1\DATA\2015\1512\151218\1501003.D
Operator : NK
Acquired : 18 Dec 2015 17:20 using AcqMethod DRPRO210.M
Instrument : Instrument #1
Sample Name: Blanc - EI 100ng
Misc Info :
Vial Number: 15



Area Percent Report

Data Path : C:\MSDCHEM\1\DATA\2015\1512\151218\
Data File : 1501003.D
Acq On : 18 Dec 2015 17:20
Operator : NK
Sample : Blanc - EI 100ng
Misc :
ALS Vial : 15 Sample Multiplier: 1

Integration Parameters: autoint1.e
Integrator: ChemStation

Method : C:\MSDCHEM\1\METHODS\GC O-C SYLILES\OCPULSIM.M
Title :

Signal : EIC Ion 141.00 (140.70 to 141.70)

peak #	R.T. min	first scan	max scan	last scan	PK TY	peak height	corr. area	corr. % max.	% of total
--------	----------	------------	----------	-----------	-------	-------------	------------	--------------	------------

No peaks were detected using the method integration parameters!

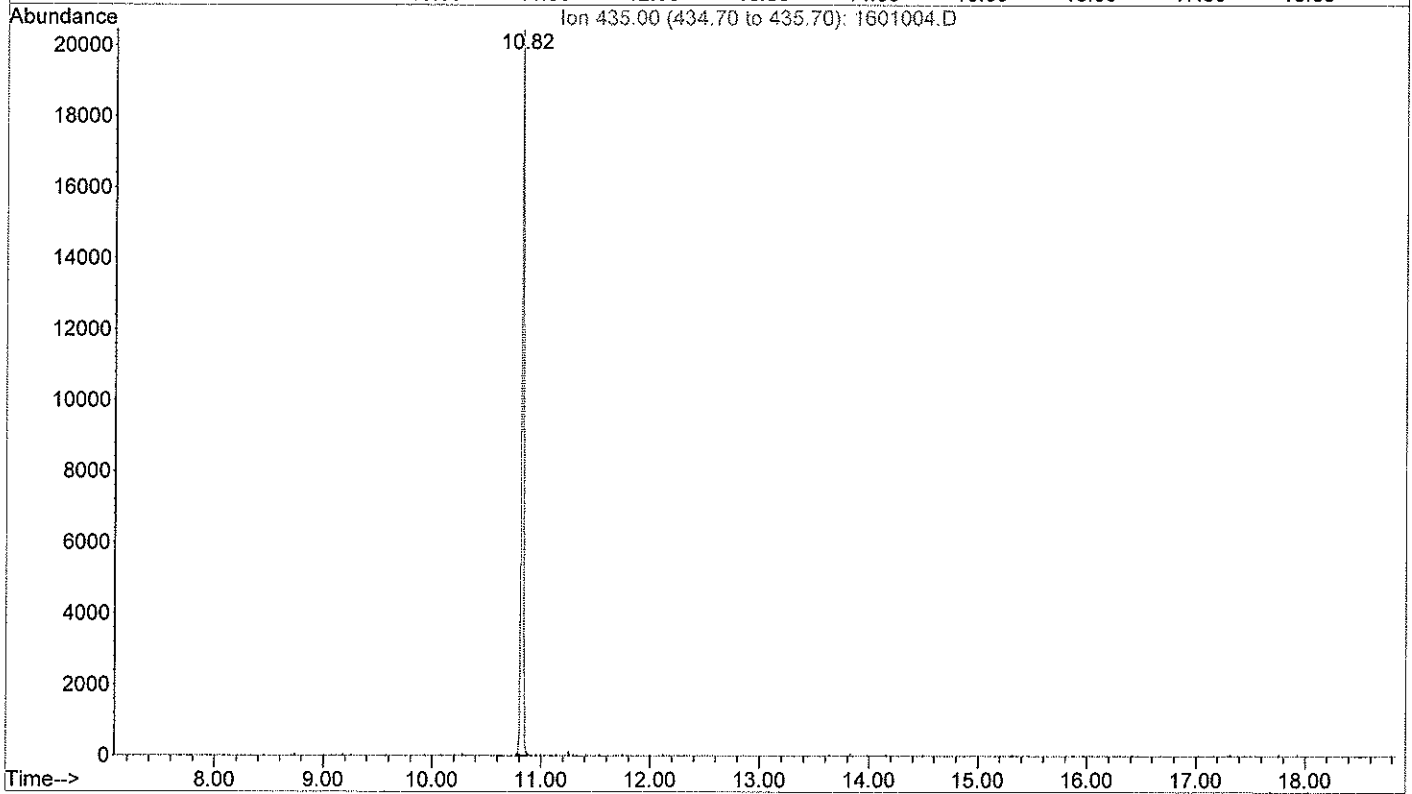
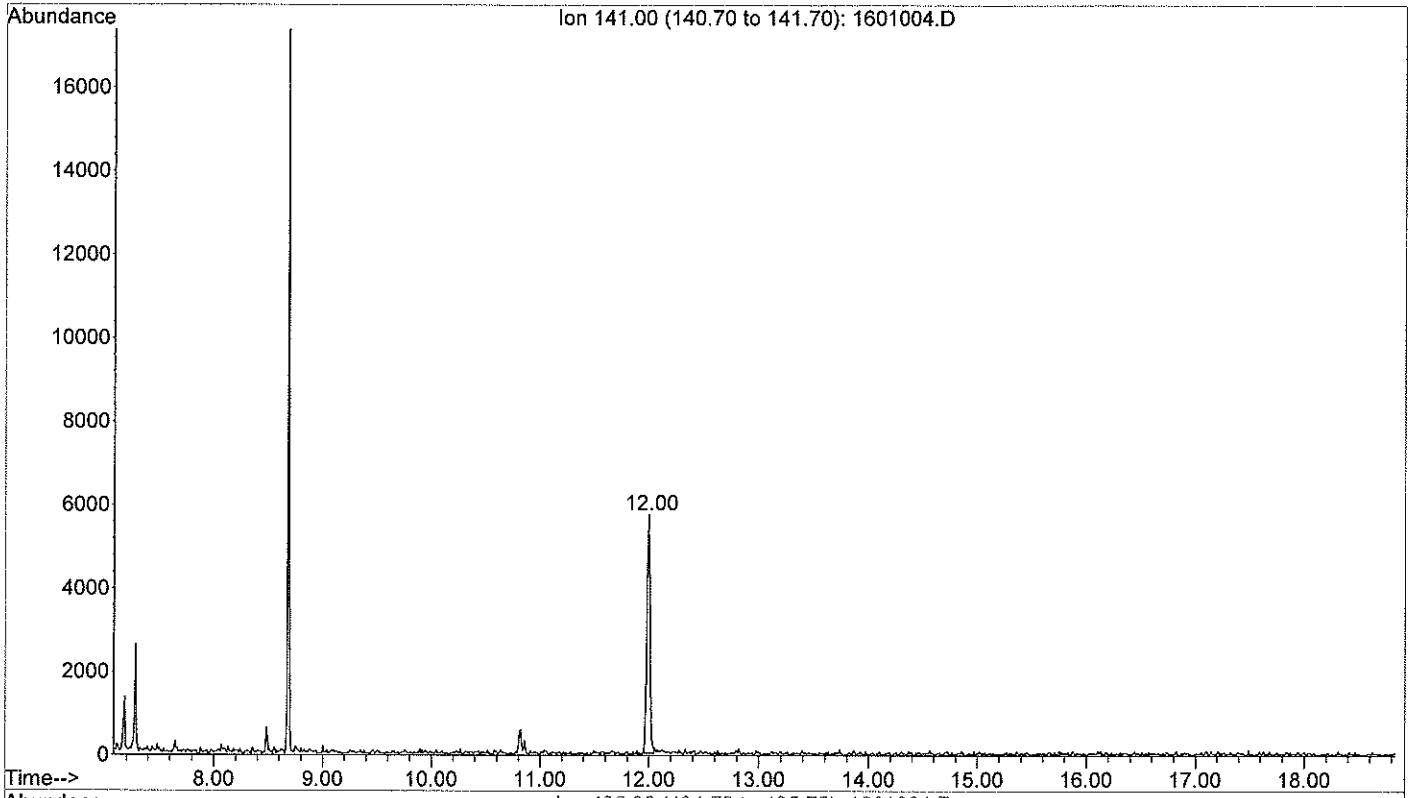
Signal : EIC Ion 435.00 (434.70 to 435.70)

peak #	R.T. min	first scan	max scan	last scan	PK TY	peak height	corr. area	corr. % max.	% of total
1	10.821	369	373	377	M	21876	285168	100.00%	100.000%

Sum of corrected areas: 285168

OCPULSIM.M Sat Dec 19 12:35:49 2015

File :C:\MSDCHEM\1\DATA\2015\1512\151218\1601004.D
Operator : NK
Acquired : 18 Dec 2015 17:45 using AcqMethod DRPRO210.M
Instrument : Instrument #1
Sample Name: 15-08140 - 10µL dilué 1/10000ème - EI 100ng
Misc Info :
Vial Number: 16



Area Percent Report

Data Path : C:\MSDCHEM\1\DATA\2015\1512\151218\
 Data File : 1601004.D
 Acq On : 18 Dec 2015 17:45
 Operator : NK
 Sample : 15-08140 - 10µL dilué 1/10000ème - EI 100ng
 Misc :
 ALS Vial : 16 Sample Multiplier: 1

Integration Parameters: autoint1.e
 Integrator: ChemStation

Method : C:\MSDCHEM\1\METHODS\GC O-C SYLILES\OCPULSIM.M
 Title :

Signal : EIC Ion 141.00 (140.70 to 141.70)

peak #	R.T. min	first scan	max scan	last scan	PK TY	peak height	corr. area	corr. % max.	% of total
1	11.996	485	490	495	M2	5720	109048	100.00%	100.000%

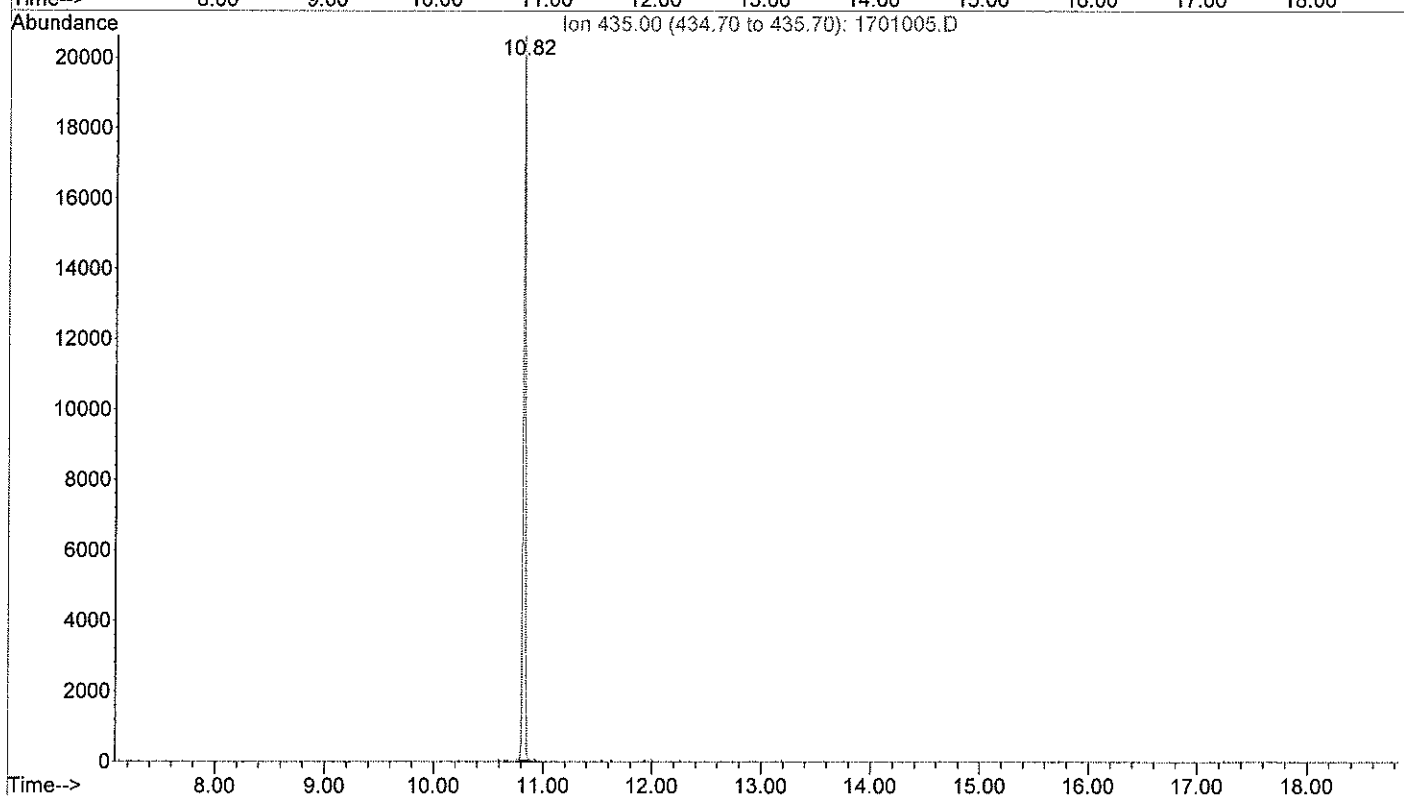
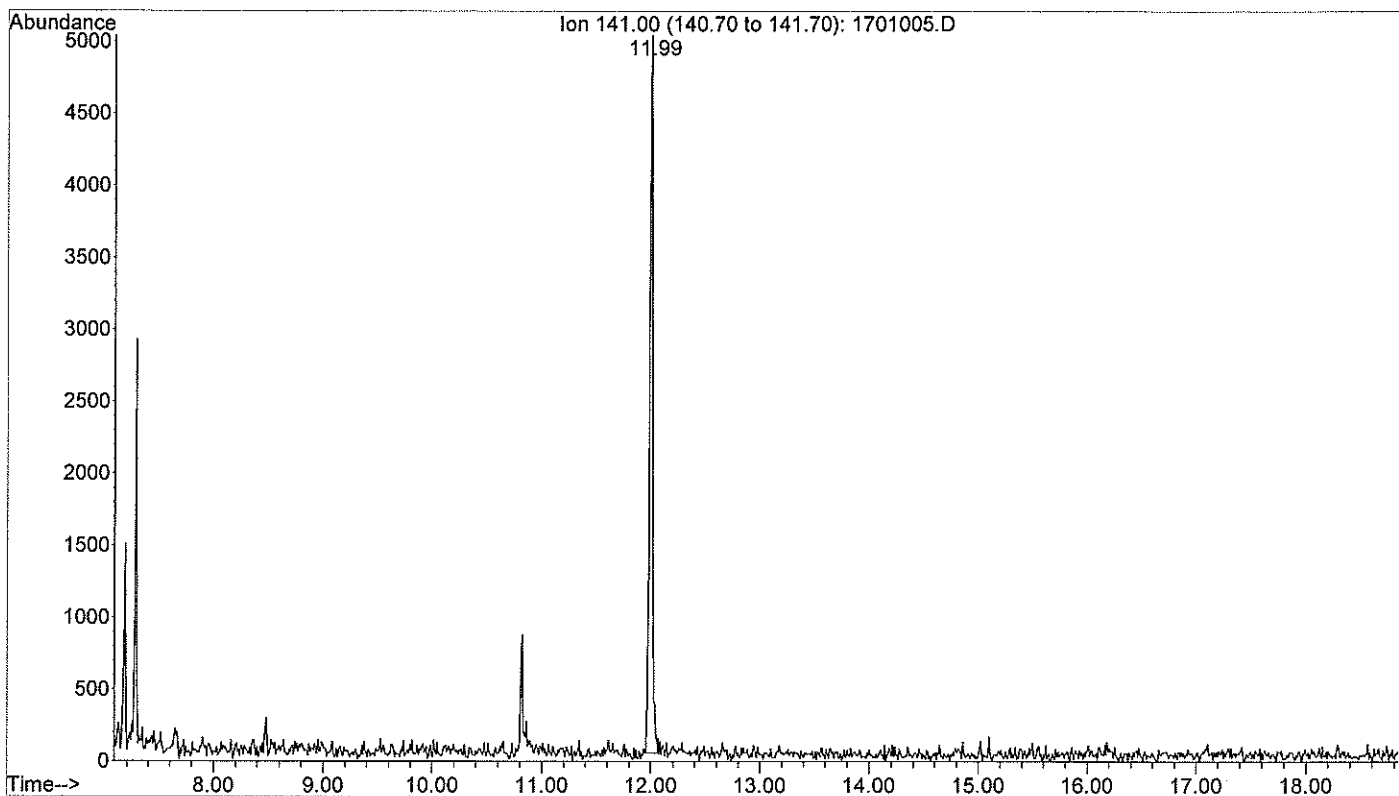
Sum of corrected areas: 109048

Signal : EIC Ion 435.00 (434.70 to 435.70)

peak #	R.T. min	first scan	max scan	last scan	PK TY	peak height	corr. area	corr. % max.	% of total
1	10.821	369	373	378	M	21011	272530	100.00%	100.000%

Sum of corrected areas: 272530

File :C:\MSDCHEM\1\DATA\2015\1512\151218\1701005.D
Operator : NK
Acquired : 18 Dec 2015 18:11 using AcqMethod DRPRO210.M
Instrument : Instrument #1
Sample Name: 15-08141 - 10µL dilué 1/10000ème - EI 100ng
Misc Info :
Vial Number: 17



Area Percent Report

Data Path : C:\MSDCHEM\1\DATA\2015\1512\151218\
Data File : 1701005.D
Acq On : 18 Dec 2015 18:11
Operator : NK
Sample : 15-08141 - 10µL dilué 1/10000ème - EI 100ng
Misc :
ALS Vial : 17 Sample Multiplier: 1

Integration Parameters: autoint1.e
Integrator: ChemStation

Method : C:\MSDCHEM\1\METHODS\GC O-C SYLILES\OCPULSIM.M
Title :

Signal : EIC Ion 141.00 (140.70 to 141.70)

peak #	R.T. min	first scan	max scan	last scan	PK TY	peak height	corr. area	corr. % max.	% of total
1	11.996	485	490	496	M2	4999	95945	100.00%	100.000%

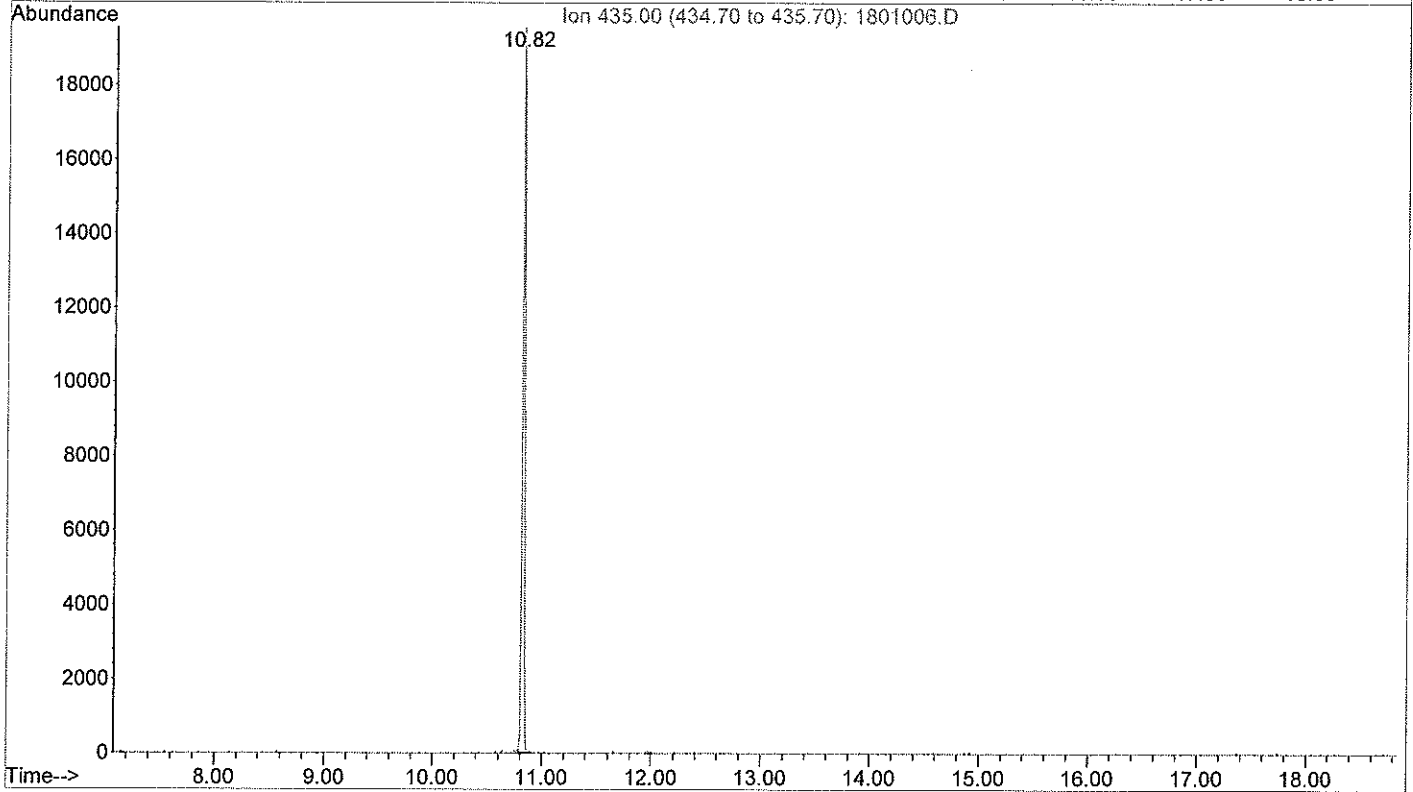
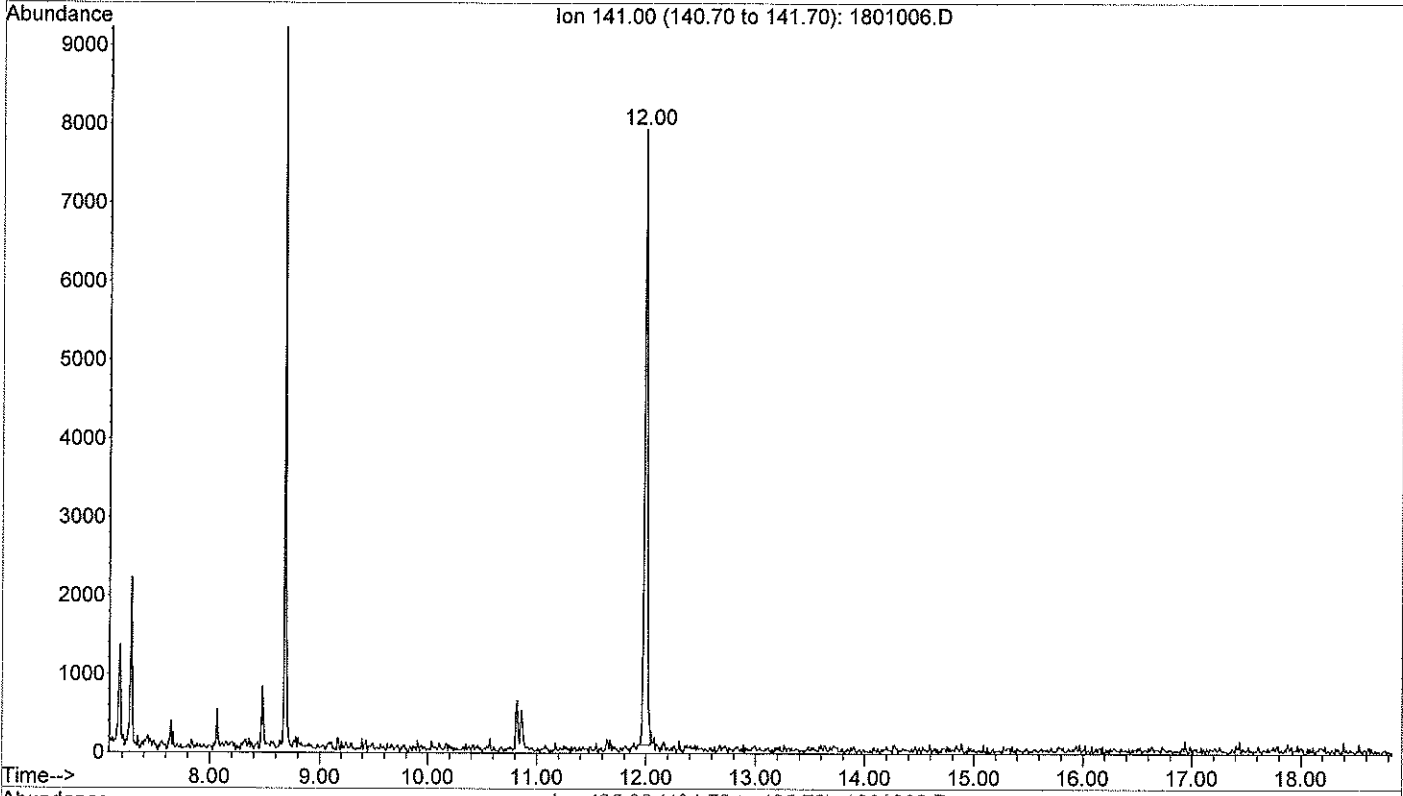
Sum of corrected areas: 95945

Signal : EIC Ion 435.00 (434.70 to 435.70)

peak #	R.T. min	first scan	max scan	last scan	PK TY	peak height	corr. area	corr. % max.	% of total
1	10.821	370	373	377	M2	21053	273172	100.00%	100.000%

Sum of corrected areas: 273172

File :C:\MSDCHEM\1\DATA\2015\1512\151218\1801006.D
Operator : NK
Acquired : 18 Dec 2015 18:36 using AcqMethod DRPRO210.M
Instrument : Instrument #1
Sample Name: 15-08142 - 10µL dilué 1/10000ème - EI 100ng
Misc Info :
Vial Number: 18



Area Percent Report

Data Path : C:\MSDCHEM\1\DATA\2015\1512\151218\
 Data File : 1801006.D
 Acq On : 18 Dec 2015 18:36
 Operator : NK
 Sample : 15-08142 - 10µL dilué 1/10000ème - EI 100ng
 Misc :
 ALS Vial : 18 Sample Multiplier: 1

Integration Parameters: autoint1.e
 Integrator: ChemStation

Method : C:\MSDCHEM\1\METHODS\GC O-C SYLILES\OCPULSIM.M
 Title :

Signal : EIC Ion 141.00 (140.70 to 141.70)

peak #	R.T. min	first scan	max scan	last scan	PK TY	peak height	corr. area	corr. % max.	% of total
1	11.996	485	490	495	M2	7836	140211	100.00%	100.000%

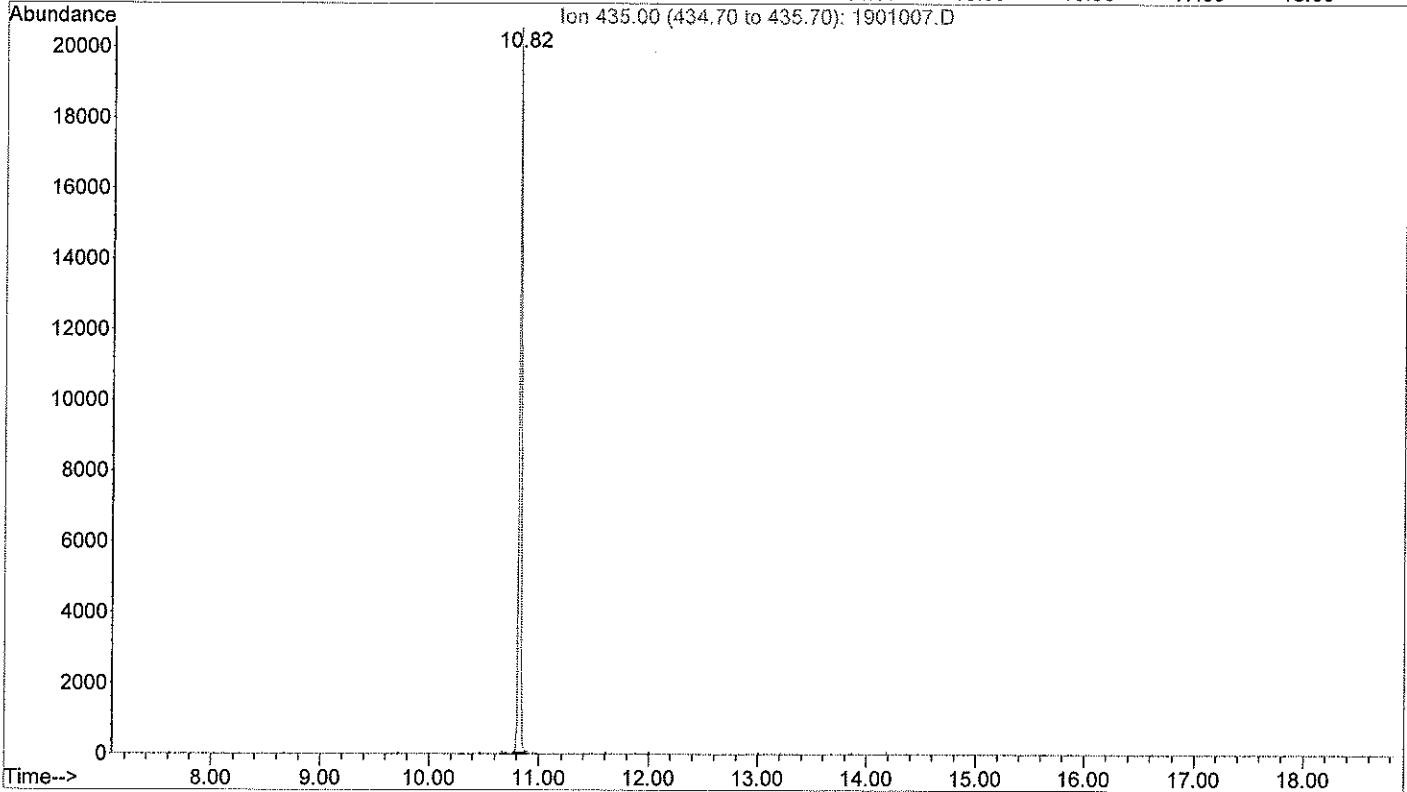
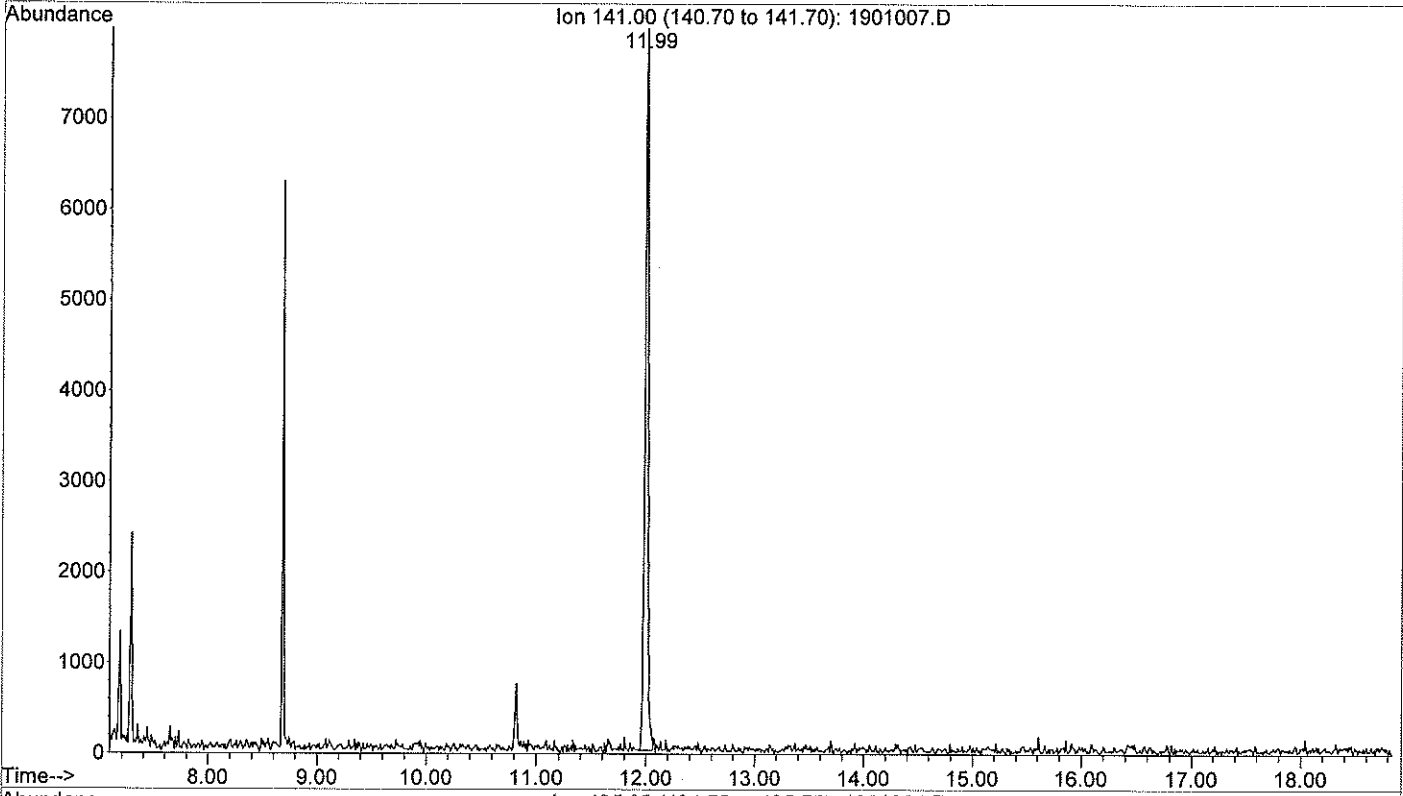
Sum of corrected areas: 140211

Signal : EIC Ion 435.00 (434.70 to 435.70)

peak #	R.T. min	first scan	max scan	last scan	PK TY	peak height	corr. area	corr. % max.	% of total
1	10.821	370	373	378	M	20228	264921	100.00%	100.000%

Sum of corrected areas: 264921

File :C:\MSDCHEM\1\DATA\2015\1512\151218\1901007.D
Operator : NK
Acquired : 18 Dec 2015 19:02 using AcqMethod DRPRO210.M
Instrument : Instrument #1
Sample Name: 15-08143 - 10µL dilué 1/10000ème - EI 100ng
Misc Info :
Vial Number: 19



Area Percent Report

Data Path : C:\MSDCHEM\1\DATA\2015\1512\151218\
Data File : 1901007.D
Acq On : 18 Dec 2015 19:02
Operator : NK
Sample : 15-08143 - 10µL dilué 1/10000ème - EI 100ng
Misc :
ALS Vial : 19 Sample Multiplier: 1

Integration Parameters: autoint1.e
Integrator: ChemStation

Method : C:\MSDCHEM\1\METHODS\GC O-C SYLILES\OCPULSIM.M
Title :

Signal : EIC Ion 141.00 (140.70 to 141.70)

peak #	R.T. min	first scan	max scan	last scan	PK TY	peak height	corr. area	corr. % max.	% of total
1	11.996	484	490	497	M	8085	158682	100.00%	100.000%

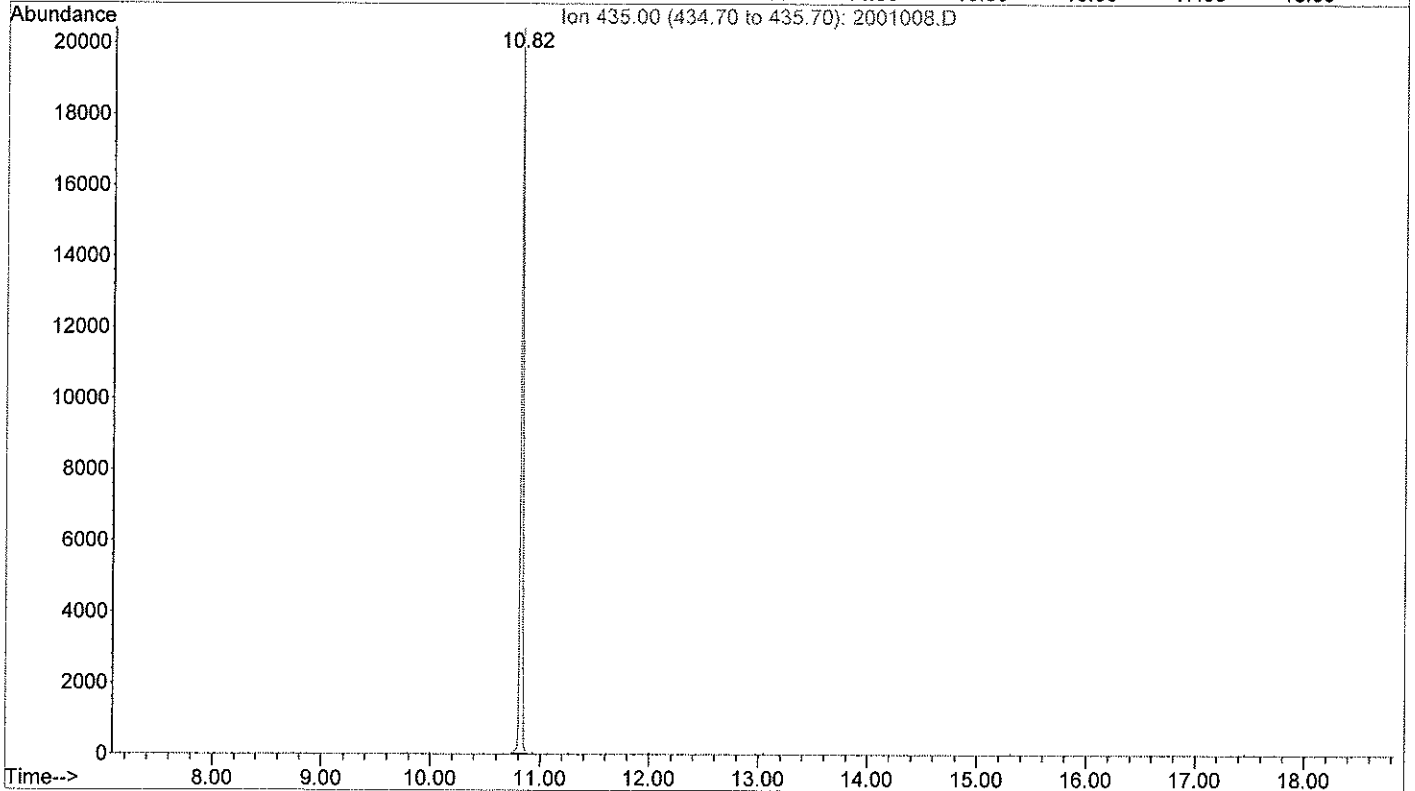
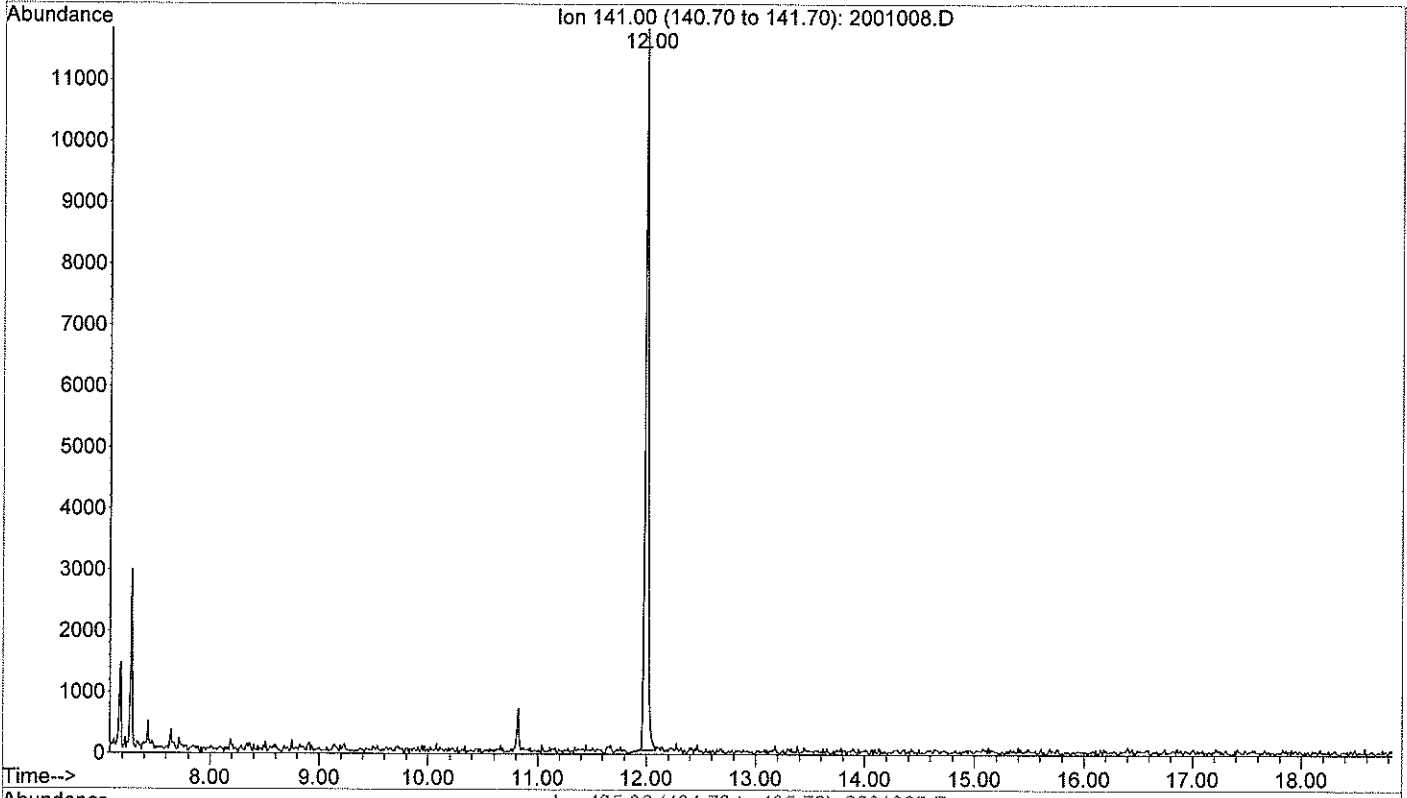
Sum of corrected areas: 158682

Signal : EIC Ion 435.00 (434.70 to 435.70)

peak #	R.T. min	first scan	max scan	last scan	PK TY	peak height	corr. area	corr. % max.	% of total
1	10.821	368	373	379	M	20993	269014	100.00%	100.000%

Sum of corrected areas: 269014

File :C:\MSDCHEM\1\DATA\2015\1512\151218\2001008.D
Operator : NK
Acquired : 18 Dec 2015 19:27 using AcqMethod DRPRO210.M
Instrument : Instrument #1
Sample Name: 15-08144 - 10µL dilué 1/10000ème - EI 100ng
Misc Info :
Vial Number: 20



Area Percent Report

Data Path : C:\MSDCHEM\1\DATA\2015\1512\151218\
 Data File : 2001008.D
 Acq On : 18 Dec 2015 19:27
 Operator : NK
 Sample : 15-08144 - 10µL dilué 1/10000ème - EI 100ng
 Misc :
 ALS Vial : 20 Sample Multiplier: 1

Integration Parameters: autoint1.e
 Integrator: ChemStation

Method : C:\MSDCHEM\1\METHODS\GC O-C SYLILES\OCPULSIM.M
 Title :

Signal : EIC Ion 141.00 (140.70 to 141.70)

peak #	R.T. min	first scan	max scan	last scan	PK TY	peak height	corr. area	corr. % max.	% of total
1	11.996	485	490	498	M2	11778	220412	100.00%	100.000%

Sum of corrected areas: 220412

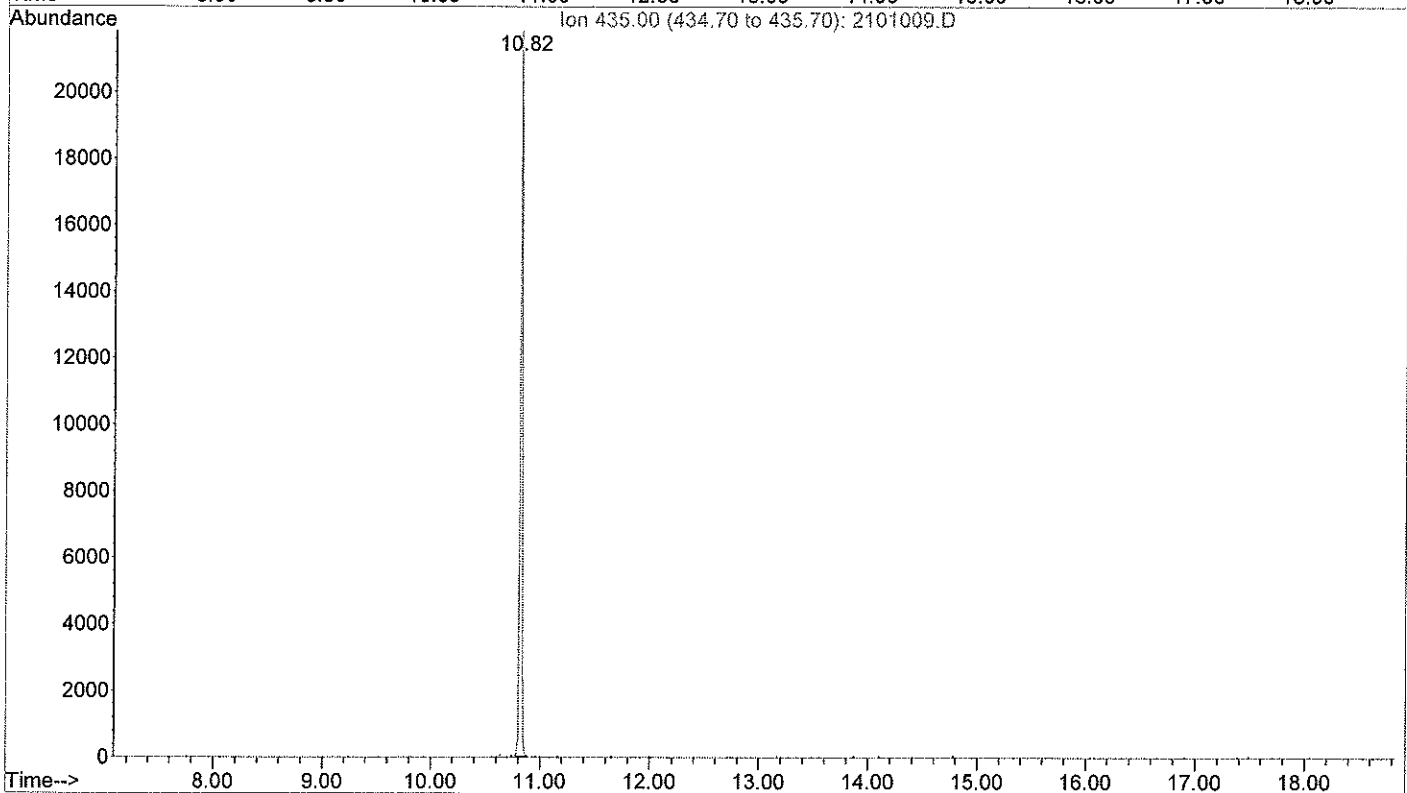
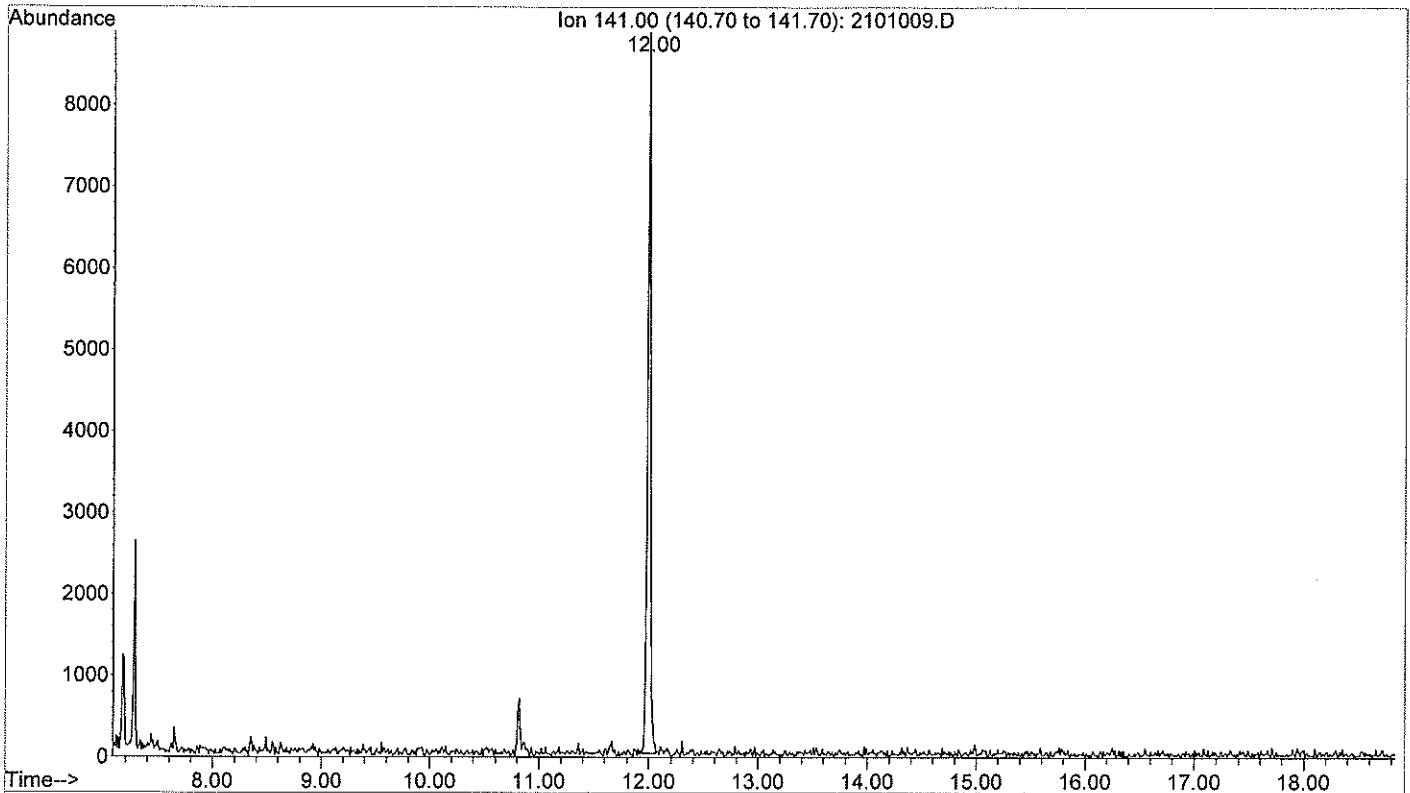
Signal : EIC Ion 435.00 (434.70 to 435.70)

peak #	R.T. min	first scan	max scan	last scan	PK TY	peak height	corr. area	corr. % max.	% of total
1	10.821	367	373	378	M	20859	273345	100.00%	100.000%

Sum of corrected areas: 273345

OCPULSIM.M Sat Dec 19 12:38:21 2015

File :C:\MSDCHEM\1\DATA\2015\1512\151218\2101009.D
Operator : NK
Acquired : 18 Dec 2015 19:52 using AcqMethod DRPRO210.M
Instrument : Instrument #1
Sample Name: 15-08145 - 10µL dilué 1/10000ème - EI 100ng
Misc Info :
Vial Number: 21



Area Percent Report

Data Path : C:\MSDCHEM\1\DATA\2015\1512\151218\
 Data File : 2101009.D
 Acq On : 18 Dec 2015 19:52
 Operator : NK
 Sample : 15-08145 - 10µL dilué 1/10000ème - EI 100ng
 Misc :
 ALS Vial : 21 Sample Multiplier: 1

Integration Parameters: autoint1.e
 Integrator: ChemStation

Method : C:\MSDCHEM\1\METHODS\GC O-C SYLILES\OCPULSIM.M
 Title :

Signal : EIC Ion 141.00 (140.70 to 141.70)

peak #	R.T. min	first scan	max scan	last scan	PK TY	peak height	corr. area	corr. % max.	% of total
1	11.996	484	490	497	M2	8846	162986	100.00%	100.000%

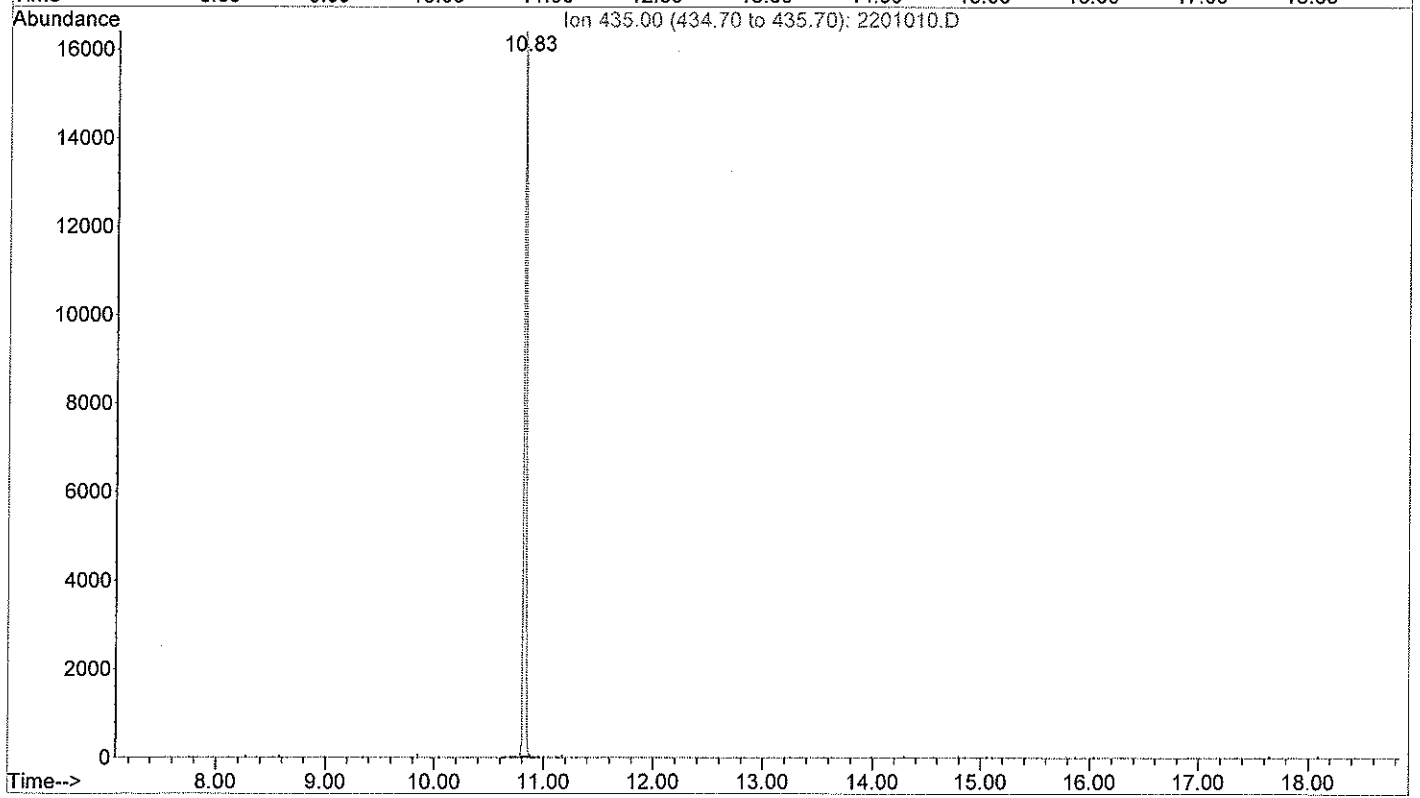
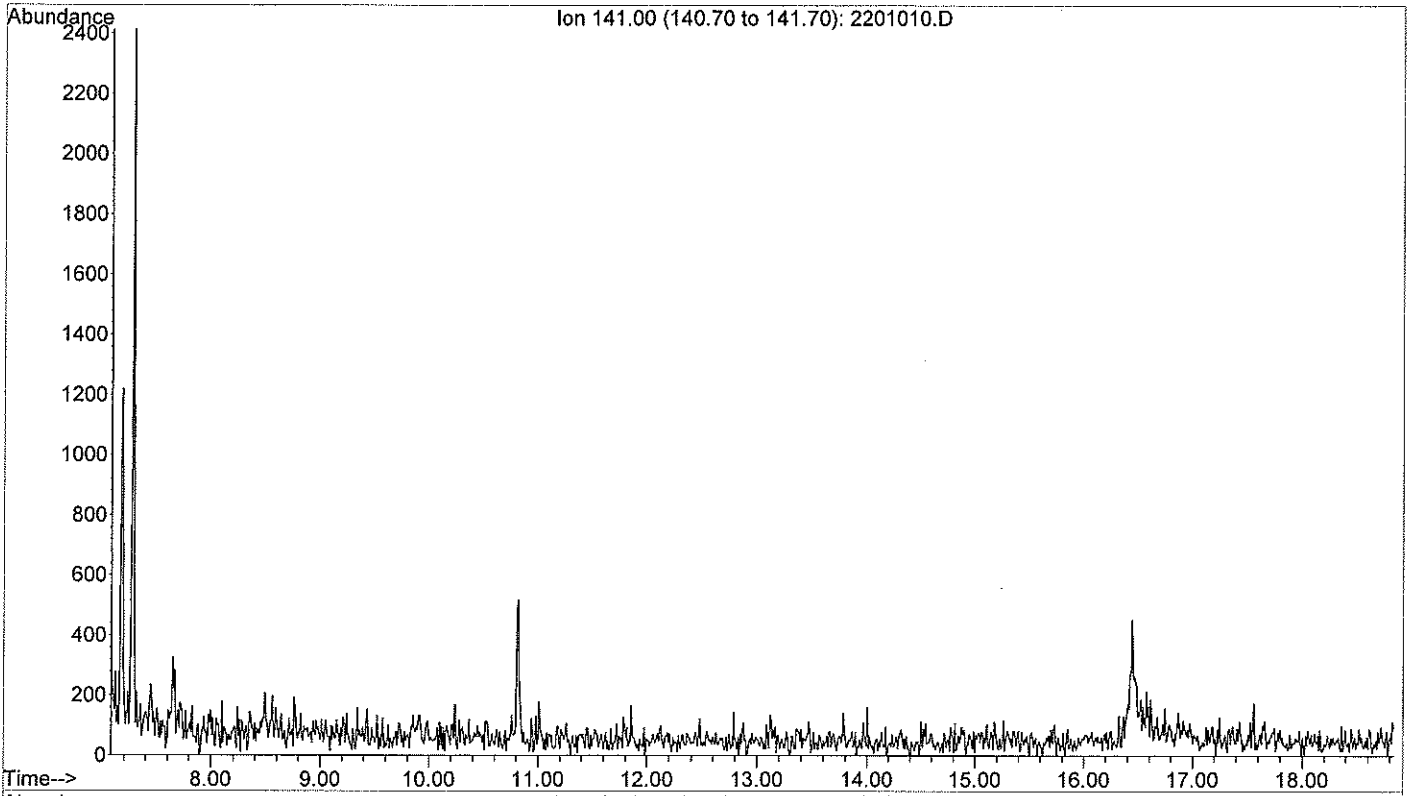
Sum of corrected areas: 162986

Signal : EIC Ion 435.00 (434.70 to 435.70)

peak #	R.T. min	first scan	max scan	last scan	PK TY	peak height	corr. area	corr. % max.	% of total
1	10.821	369	373	378	M2	22281	281771	100.00%	100.000%

Sum of corrected areas: 281771

File :C:\MSDCHEM\1\DATA\2015\1512\151218\2201010.D
Operator : NK
Acquired : 18 Dec 2015 20:18 using AcqMethod DRPRO210.M
Instrument : Instrument #1
Sample Name: 15-08146 - 10µL dilué 1/10000ème - EI 100ng
Misc Info :
Vial Number: 22



Area Percent Report

Data Path : C:\MSDCHEM\1\DATA\2015\1512\151218\
Data File : 2201010.D
Acq On : 18 Dec 2015 20:18
Operator : NK
Sample : 15-08146 - 10µL dilué 1/10000ème - EI 100ng
Misc :
ALS Vial : 22 Sample Multiplier: 1

Integration Parameters: autoint1.e
Integrator: ChemStation

Method : C:\MSDCHEM\1\METHODS\GC O-C SYLILES\OCPULSIM.M
Title :

Signal : EIC Ion 141.00 (140.70 to 141.70)

peak #	R.T. min	first scan	max scan	last scan	PK TY	peak height	corr. area	corr. % max.	% of total
--------	----------	------------	----------	-----------	-------	-------------	------------	--------------	------------

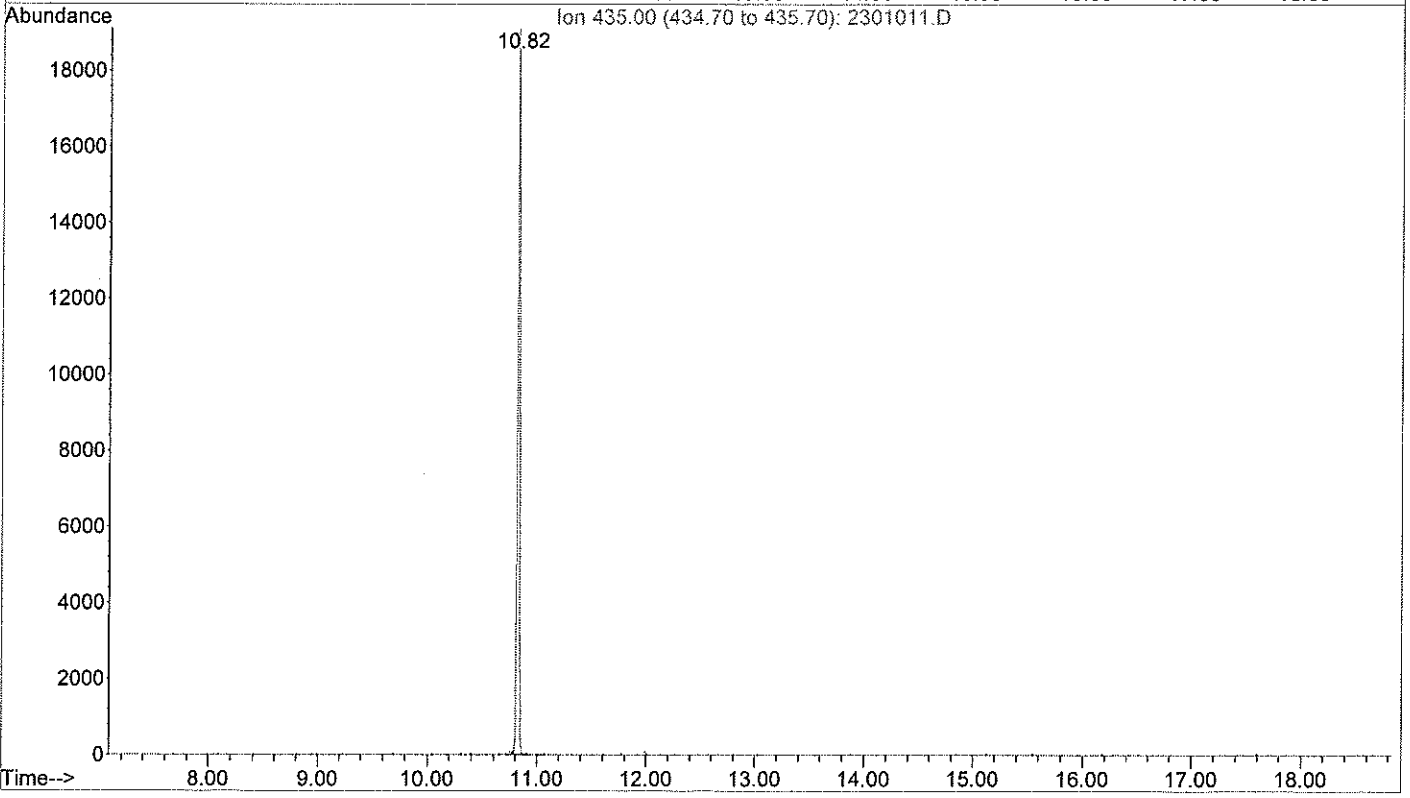
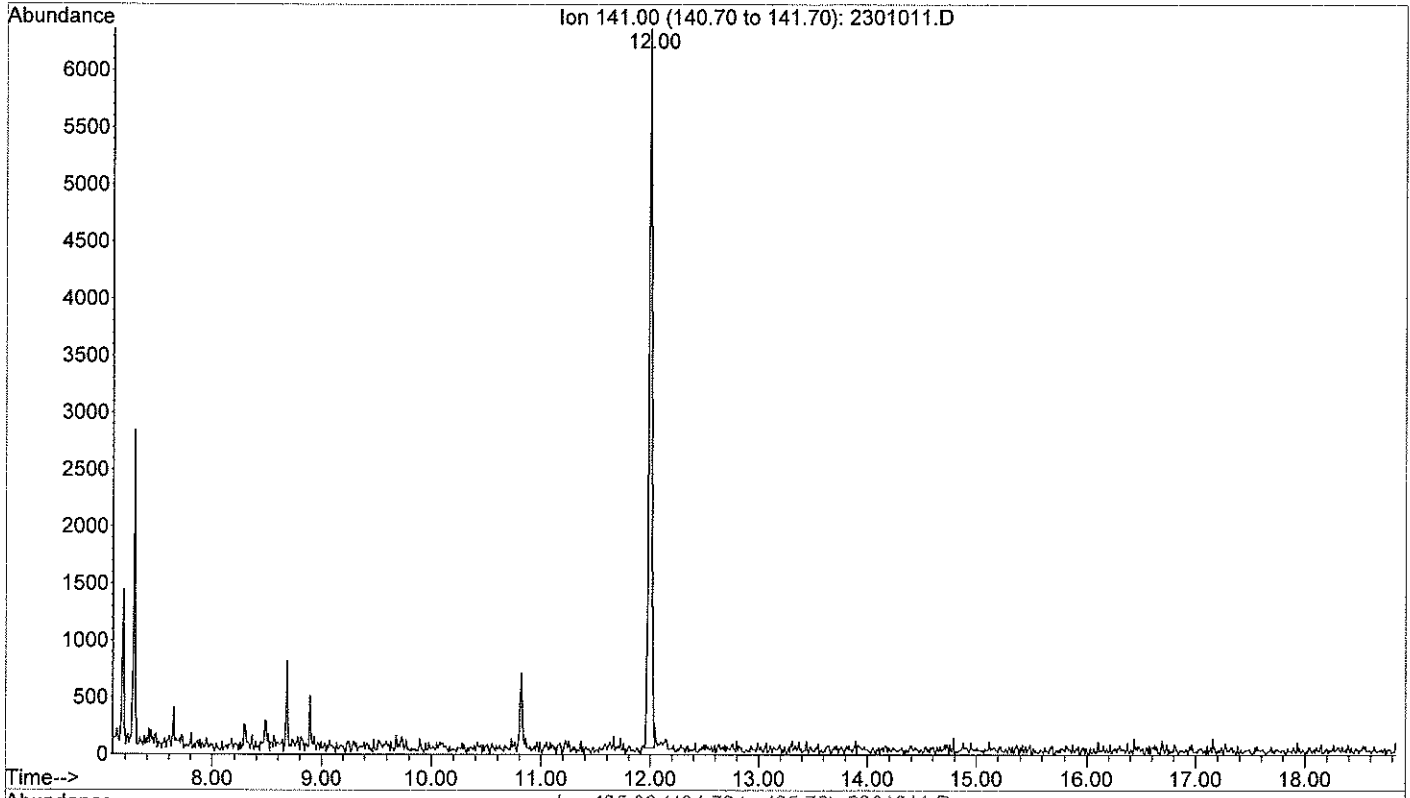
No peaks were detected using the method integration parameters!

Signal : EIC Ion 435.00 (434.70 to 435.70)

peak #	R.T. min	first scan	max scan	last scan	PK TY	peak height	corr. area	corr. % max.	% of total
1	10.821	370	373	378	M	17771	250465	100.00%	100.000%

Sum of corrected areas: 250465

File :C:\MSDCHEM\1\DATA\2015\1512\151218\2301011.D
Operator : NK
Acquired : 18 Dec 2015 20:43 using AcqMethod DRPRO210.M
Instrument : Instrument #1
Sample Name: 15-08147 - 10µL dilué 1/10000ème - EI 100ng
Misc Info :
Vial Number: 23



Area Percent Report

Data Path : C:\MSDCHEM\1\DATA\2015\1512\151218\
Data File : 2301011.D
Acq On : 18 Dec 2015 20:43
Operator : NK
Sample : 15-08147 - 10µL dilué 1/10000ème - EI 100ng
Misc :
ALS Vial : 23 Sample Multiplier: 1

Integration Parameters: autoint1.e
Integrator: ChemStation

Method : C:\MSDCHEM\1\METHODS\GC O-C SYLILES\OCPULSIM.M
Title :

Signal : EIC Ion 141.00 (140.70 to 141.70)

peak #	R.T. min	first scan	max scan	last scan	PK TY	peak height	corr. area	corr. % max.	% of total
1	11.996	486	490	494	M2	6304	116623	100.00%	100.00%

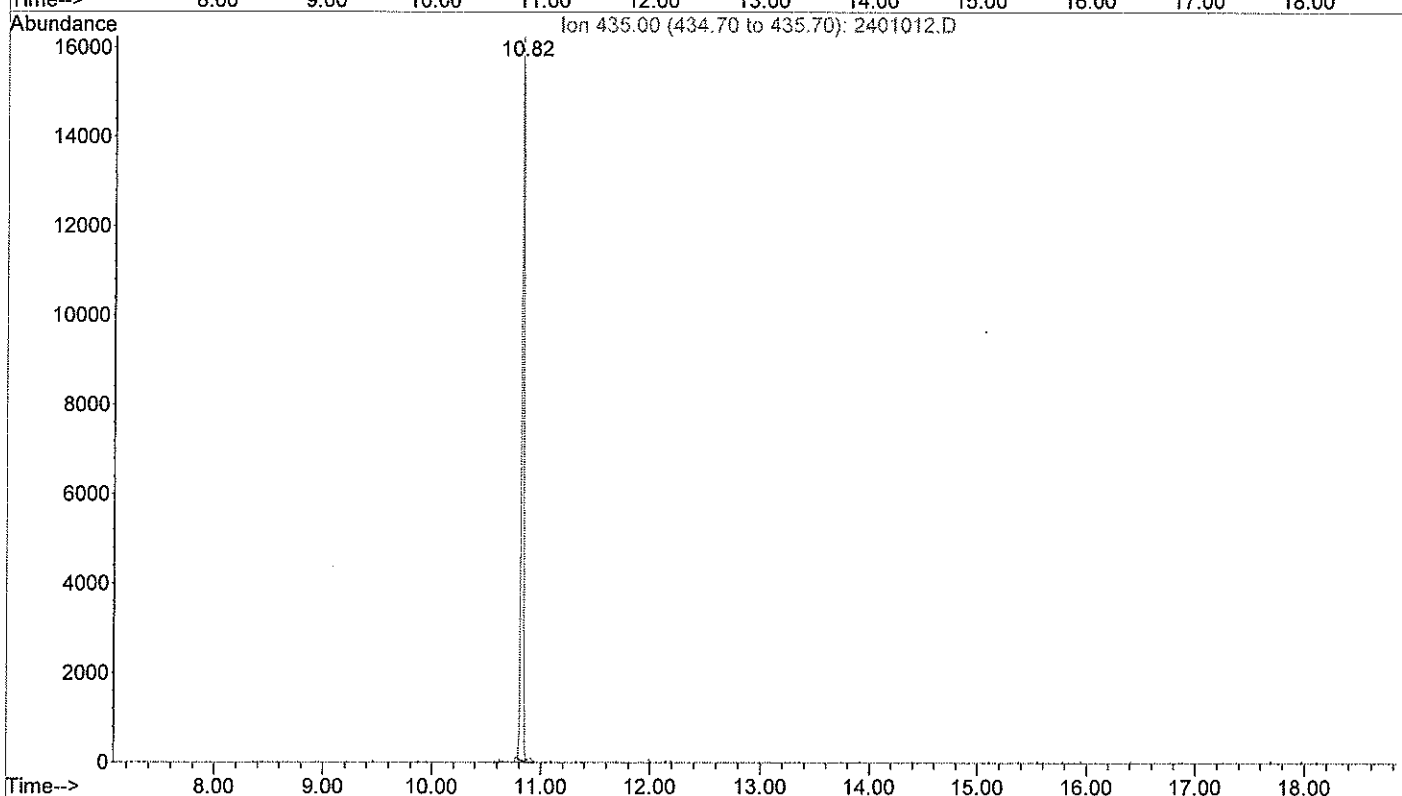
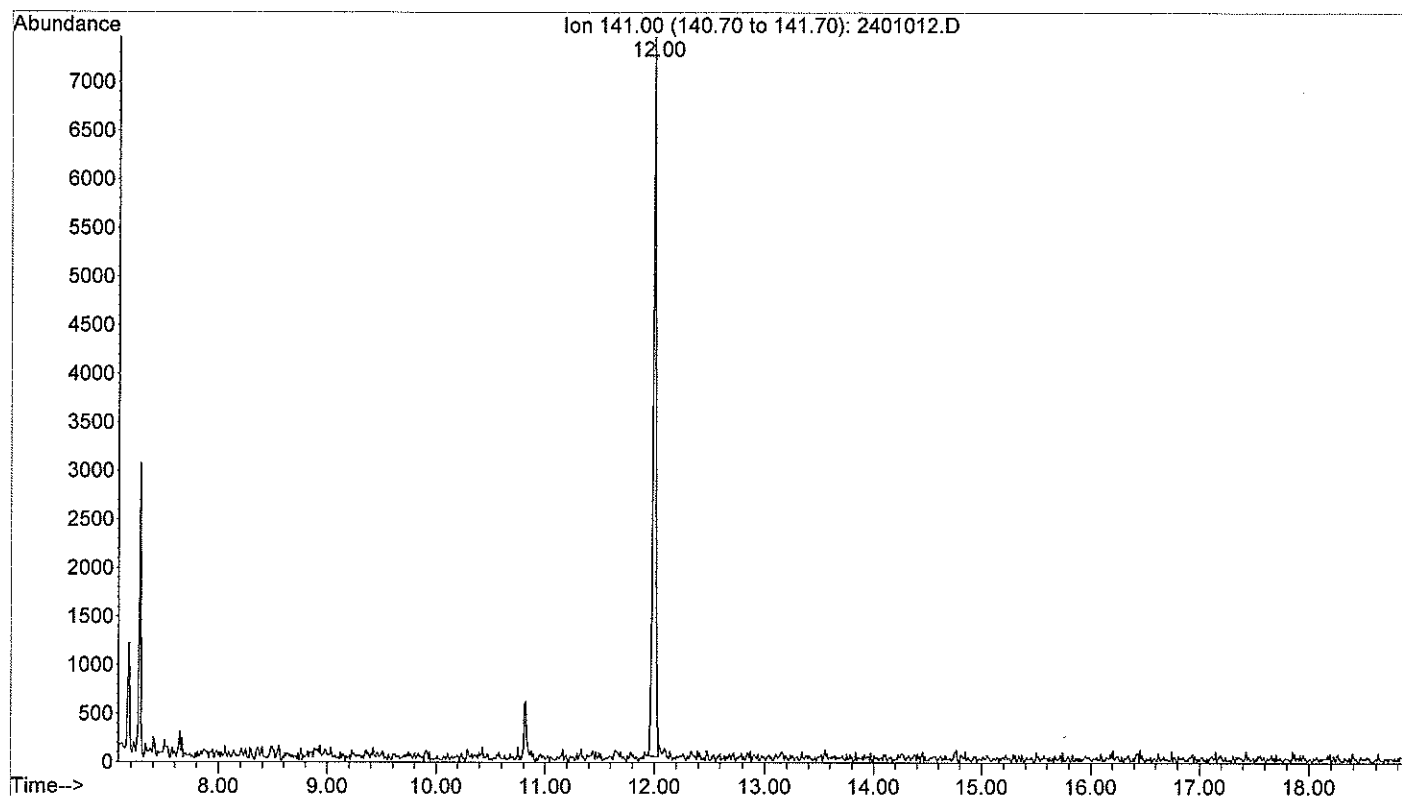
Sum of corrected areas: 116623

Signal : EIC Ion 435.00 (434.70 to 435.70)

peak #	R.T. min	first scan	max scan	last scan	PK TY	peak height	corr. area	corr. % max.	% of total
1	10.821	369	373	377	M	19772	259367	100.00%	100.00%

Sum of corrected areas: 259367

File :C:\MSDCHEM\1\DATA\2015\1512\151218\2401012.D
Operator : NK
Acquired : 18 Dec 2015 21:08 using AcqMethod DRPRO210.M
Instrument : Instrument #1
Sample Name: 15-08148 - 10µL dilué 1/10000ème - EI 100ng
Misc Info :
Vial Number: 24



Area Percent Report

Data Path : C:\MSDCHEM\1\DATA\2015\1512\151218\
 Data File : 2401012.D
 Acq On : 18 Dec 2015 21:08
 Operator : NK
 Sample : 15-08148 - 10µL dilué 1/10000ème - EI 100ng
 Misc :
 ALS Vial : 24 Sample Multiplier: 1

Integration Parameters: autoint1.e
 Integrator: ChemStation

Method : C:\MSDCHEM\1\METHODS\GC O-C SYLILES\OCPULSIM.M
 Title :

Signal : EIC Ion 141.00 (140.70 to 141.70)

peak #	R.T. min	first scan	max scan	last scan	PK TY	peak height	corr. area	corr. % max.	% of total
1	11.996	485	490	494	M	7400	127980	100.00%	100.000%

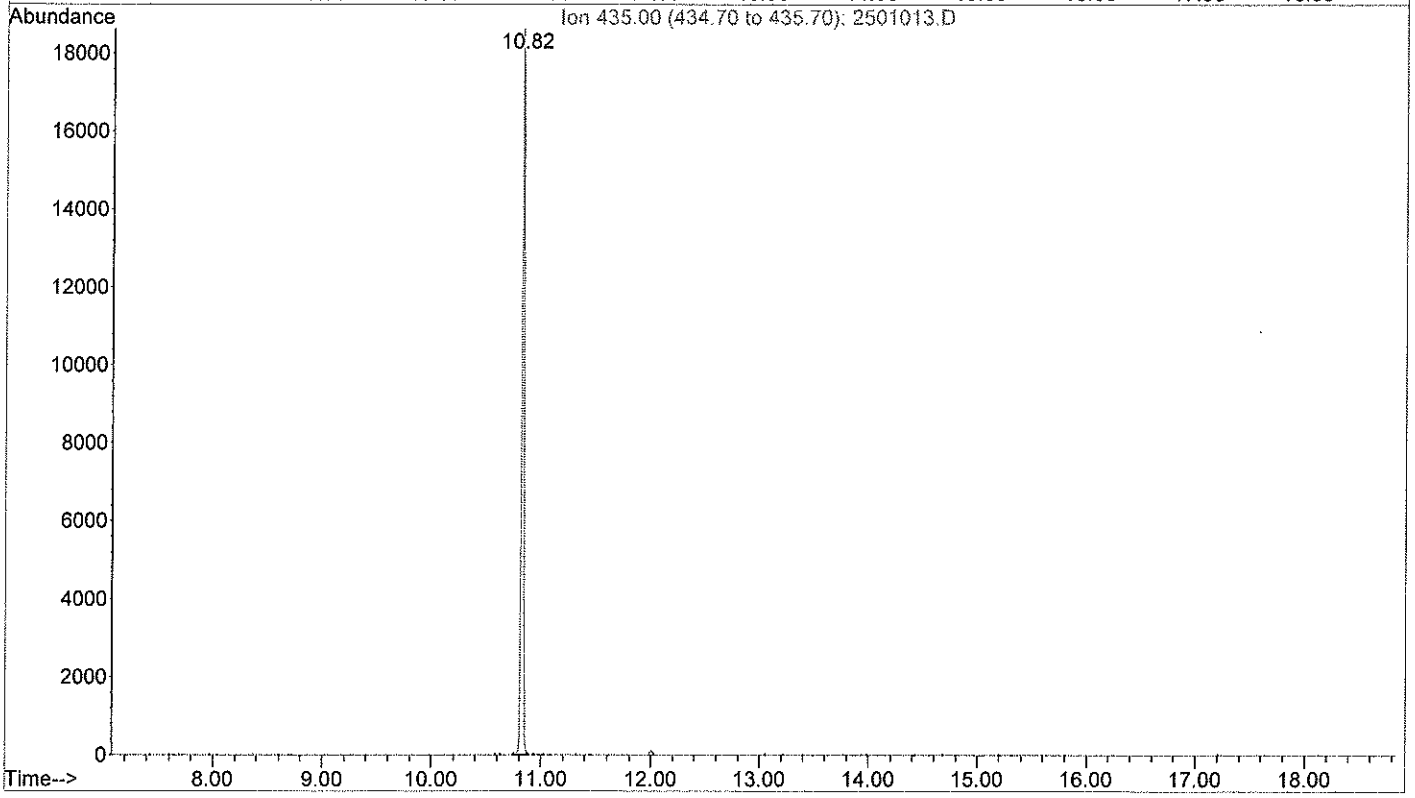
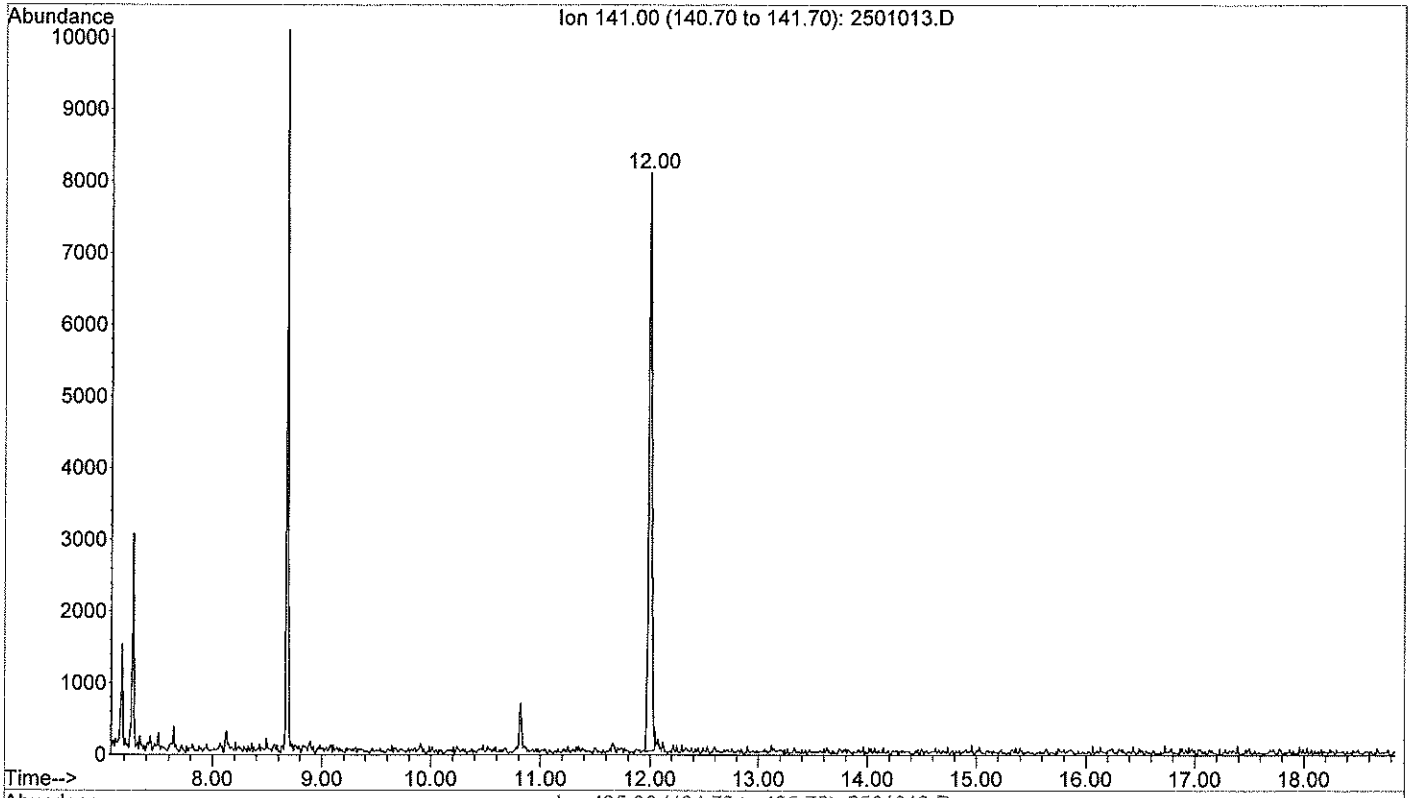
Sum of corrected areas: 127980

Signal : EIC Ion 435.00 (434.70 to 435.70)

peak #	R.T. min	first scan	max scan	last scan	PK TY	peak height	corr. area	corr. % max.	% of total
1	10.821	370	373	377	M	16928	230649	100.00%	100.000%

Sum of corrected areas: 230649

File :C:\MSDCHEM\1\DATA\2015\1512\151218\2501013.D
Operator : NK
Acquired : 18 Dec 2015 21:34 using AcqMethod DRPRO210.M
Instrument : Instrument #1
Sample Name: 15-08150 - 10µL dilué 1/10000ème - EI 100ng
Misc Info :
Vial Number: 25



Area Percent Report

Data Path : C:\MSDCHEM\1\DATA\2015\1512\151218\
 Data File : 2501013.D
 Acq On : 18 Dec 2015 21:34
 Operator : NK
 Sample : 15-08150 - 10µL dilué 1/10000ème - EI 100ng
 Misc :
 ALS Vial : 25 Sample Multiplier: 1

Integration Parameters: autoint1.e
 Integrator: ChemStation

Method : C:\MSDCHEM\1\METHODS\GC O-C SYLILES\OCPULSIM.M
 Title :

Signal : EIC Ion 141.00 (140.70 to 141.70)

peak #	R.T. min	first scan	max scan	last scan	PK TY	peak height	corr. area	corr. % max.	% of total
1	11.996	485	490	494	M2	8080	152019	100.00%	100.000%

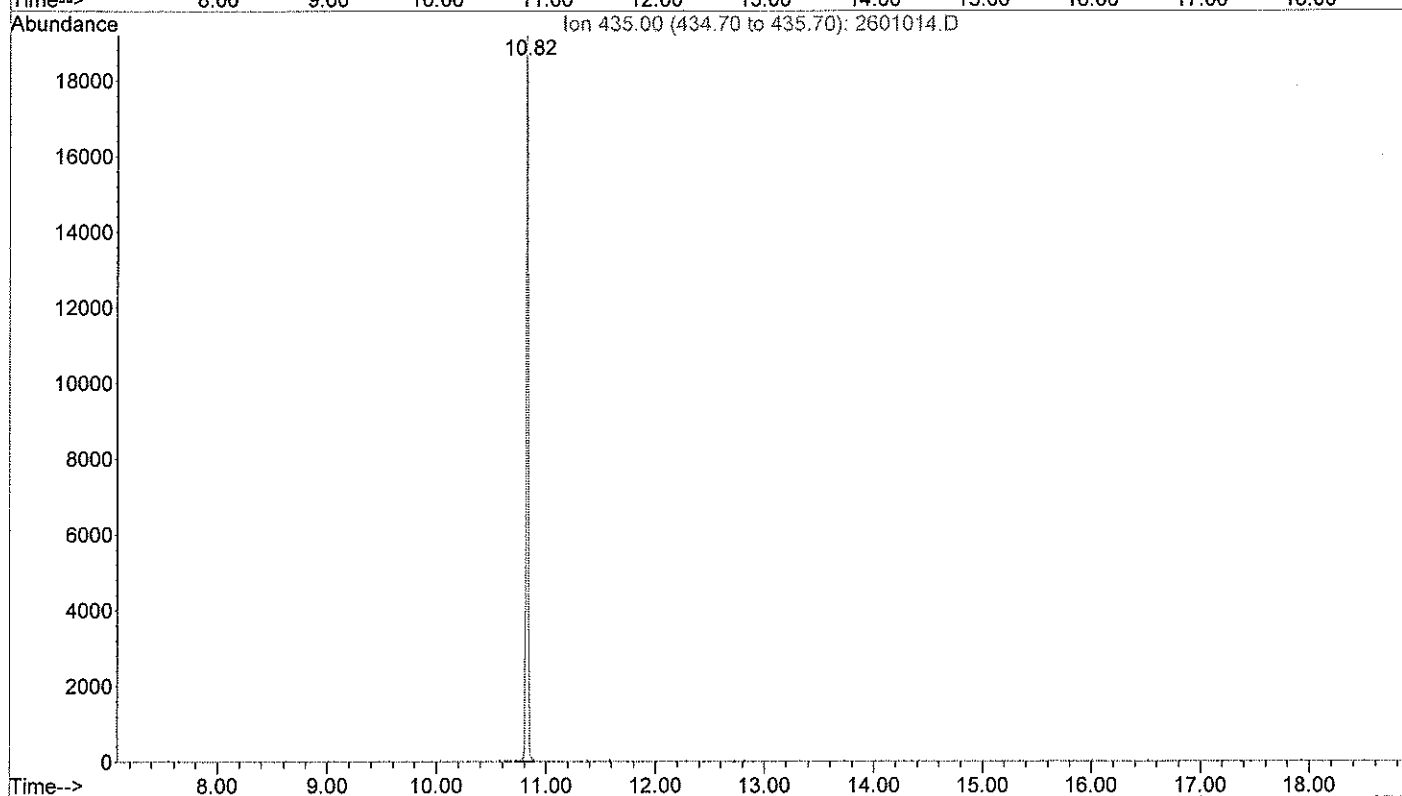
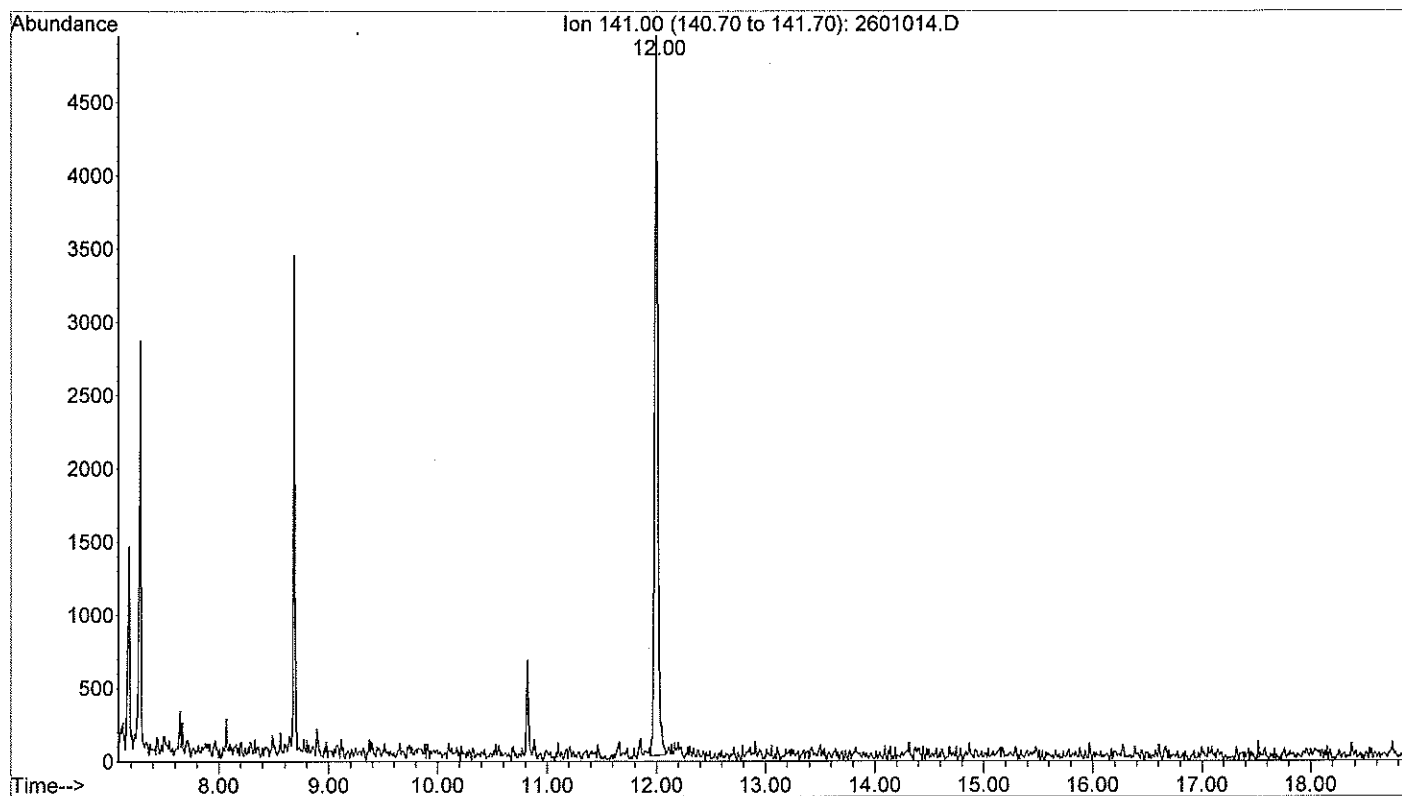
Sum of corrected areas: 152019

Signal : EIC Ion 435.00 (434.70 to 435.70)

peak #	R.T. min	first scan	max scan	last scan	PK TY	peak height	corr. area	corr. % max.	% of total
1	10.820	369	373	378	M	19498	270549	100.00%	100.000%

Sum of corrected areas: 270549

File :C:\MSDCHEM\1\DATA\2015\1512\151218\2601014.D
Operator : NK
Acquired : 18 Dec 2015 21:59 using AcqMethod DRPRO210.M
Instrument : Instrument #1
Sample Name: 15-08151 - 10µL dilué 1/10000ème - EI 100ng
Misc Info :
Vial Number: 26



Area Percent Report

Data Path : C:\MSDCHEM\1\DATA\2015\1512\151218\
 Data File : 2601014.D
 Acq On : 18 Dec 2015 21:59
 Operator : NK
 Sample : 15-08151 - 10µL dilué 1/10000ème - EI 100ng
 Misc :
 ALS Vial : 26 Sample Multiplier: 1

Integration Parameters: autoint1.e
 Integrator: ChemStation

Method : C:\MSDCHEM\1\METHODS\GC O-C SYLILES\OCPULSIM.M
 Title :

Signal : EIC Ion 141.00 (140.70 to 141.70)

peak #	R.T. min	first scan	max scan	last scan	PK TY	peak height	corr. area	corr. % max.	% of total
1	11.996	485	490	498	M2	4929	93226	100.00%	100.000%

Sum of corrected areas: 93226

Signal : EIC Ion 435.00 (434.70 to 435.70)

peak #	R.T. min	first scan	max scan	last scan	PK TY	peak height	corr. area	corr. % max.	% of total
1	10.821	369	373	378	M	20183	262463	100.00%	100.000%

Sum of corrected areas: 262463

OCPULSIM.M Sat Dec 19 12:49:56 2015